

Sage 300 ERP

Sage 300 ERP 2014

Financial Reporter User's Guide



sage

This is a publication of Sage Software, Inc.

Copyright © 2013. Sage Software, Inc. All rights reserved.

Sage, the Sage logos, and the Sage product and service names mentioned herein are registered trademarks or trademarks of Sage Software, Inc. or its affiliated entities. All other trademarks are the property of their respective owners.

Microsoft ®SQL Server®, Windows Vista® and the Windows logo are either registered trademarks or trademarks of Microsoft Corporation in the United States and/or in other countries.

The names of all other products and services are property of their respective owners.

Your use of this document and the Sage product(s) described herein is governed by the terms and conditions of the Sage End User License Agreement ("EULA") or other agreement that is provided with or included in the Sage product. Nothing in this document supplements, modifies or amends those terms and conditions. Except as expressly stated in those terms and conditions, the information in this document is provided by Sage "AS IS" and Sage disclaims all express, implied or statutory warranties of any kind, including but not limited to the warranties of merchantability, fitness for a particular purpose or of non-infringement. No implied license is granted to you under any Sage intellectual property or trade secret right. Sage reserves the right to revise, supplement or remove information in this document at any time without notice to you or others.

Sage End User License: <http://na.sage.com/sage-na/eula>

Contents

Introduction	1
Chapter 1: Financial Reporter Overview	3
Key Financial Reporter Concepts	4
Producing Financial Statements	5
Designing the Chart of Accounts	5
Creating a Financial Statement Specification	6
Printing Financial Statements	6
Chapter 2: Financial Reporter Tutorial	7
About the Statement Designer	7
About Report Specification Files	8
Lesson 1: Using Formulas to Retrieve G/L Data	8
Exercise 1: Adding Basic Account Information	9
Exercise 2: Adding Column Totals and Formatting Columns	11
Lesson 2: Using FR Paste to Insert Formulas	12
Exercise 1: Applying the FRACCT Function	12
Exercise 2: Applying the FRAMT Function	14
Lesson 3: Creating a Financial Report Specification	15
Exercise 1: Adding a Comment	15
Exercise 2: Creating a Default Specification Row	16
Exercise 3: Adding Column Headings	17
Exercise 4: Adding Account Reference Lines to the Statement	18
Exercise 5: Setting the Spec Range for the Statement	20
Exercise 6: Generating the Statement	21
More Suggested Exercises	22
Where To Now?	24

Chapter 3: Designing Financial Statements	25
Information Included On Financial Statements	25
Data Selection Criteria	26
Consolidating Accounts	26
About Financial Statement Specifications	27
Layout of a Report Specification	27
Rules for Defining the Spec Range, Report Range, and Print Range	28
About Generating Reports from Specifications	28
G/L Statement Designer	30
About Totals and Subtotals	33
About Rounding on Balance Sheets	34
About Verifying Account Data	37
About Optional Fields in Financial Reports	38
About Columns in Report Specifications	39
Sample Report Specification	39
Column A	39
Columns B, C and D	40
Column E	42
About Calculated Columns	44
About Default Column Specifications	45
Sample Default Column Specifications	48
Using Formulas to Retrieve General Ledger Account Information	51
About Account Order in Financial Statements	52
About Consolidating Account Ranges	55
About Account Number References	59
About Selection Criteria for Filtering Accounts	62
About Wildcard Characters in Account Numbers	66
About Formatting Financial Statements	68
Adding Title Lines	68
Adding Explanatory Comments (..)	69
Grid Lines and Other Report Formatting	69
Hiding Columns and Rows	69

About Page Layout	70
About the Spec Range	71
About the Report Range and the Print Range	73
Consolidating the Financial Statements of Multiple Companies in Microsoft Excel	74
Chapter 4: Printing Financial Statements	77
Printing Reports With and Without a Spec Range	78
Preparing to Print Reports	78
Printing a Financial Statement	79
G/L Print Financial Statements Screen	81
Overview	81
Print for Financial Statements Screen	85
Appendix A: Sample Financial Statements	87
Balance Sheets	87
Income Statements	89
Financial Analysis Statements	91
Financial Forecasts	92
Appendix B: FR Menu Commands	93
FR Menu Commands	93
About FR Drilldown	94
FR DrillDown Example	95
Formulas that Support FR Drilldown	95
About FR Paste	96
Pasting Single Values and Default Column Specifications	97
Pasting Column Formulas	97
About the Fiscal Designator	97
Using FR Paste to Insert Information in Financial Reports	98
Appendix C: Account Reference Syntax and Examples	101
Standard Account References	101

Appendix D: FR Function Reference	105
Financial Reporter Function Notation	105
Financial Reporter Functions	105
FR	107
FRACCT	110
FRAMT	114
FRAMTA	121
FRCREDIT	128
FRDEBIT	135
FRFISCAL	142
FRPOST	144
FRRATE	147
FRSDISC	149
FRTRN	150
FRTRNA	156
FRTRNCR	161
FRTRNDR	166
Appendix E: FR Field Reference	171
Account Master Fields	171
Transaction Fields	173
Appendix F: FAQ and Troubleshooting	175
How Do I...	175
Troubleshooting	176
Financial Reporter Error Messages	178
Error Messages Printed on Financial Statements	178
Error Messages when Starting G/L Statement Designer or Running Print Financial Statements	179
Error Messages when Starting Financial Reporter	180
Index	181

Introduction

General Ledger includes Financial Reporter—a powerful tool that uses Microsoft Excel to read, manipulate, format, graph, and print general ledger data.

The *Financial Reporter User's Guide* contains all the information you need to design and print financial statements for your business. It contains the following chapters:

- **Chapter 1: Financial Reporter Overview**

This chapter provides an overview of Financial Reporter, including some basic concepts, and explains how Financial Reporter works with Microsoft Excel to extract and print your General Ledger data.

- **Chapter 2: Financial Reporter Tutorial**

This chapter guides you through the design of a basic financial statement using the G/L Statement Designer. The lessons will familiarize you with the product before you begin working with specification files.

- **Chapter 3: Designing Financial Statements**

This chapter includes detailed information about using the G/L Statement Designer to create custom financial statements.

- **Chapter 4: Printing Financial Statements**

This chapter includes information about using the G/L Print Financial Statements screen to print financial statements.

- **Appendix A: Sample Financial Statements**

This appendix provides information about the sample specification files included with Sage 300 ERP, and about the financial statements they produce.

- **Appendix B: FR Menu Commands**

This appendix lists menu commands that appear on the FR menu in the G/L Statement Designer.

- **Appendix C: Account Reference Syntax and Examples**

This appendix lists syntax and examples for account references you can use in the G/L Statement Designer to retrieve information from General Ledger.

- **Appendix D: FR Function Reference**

This appendix lists the Financial Reporter functions you can use in spreadsheets to retrieve data from General Ledger, including transaction and optional field information.

- **Appendix E: FR Field Reference**

This appendix lists the account master fields and transaction fields from which you can retrieve data using FR functions.

- **Appendix F: FAQ and Troubleshooting**

Use this appendix to find information on the error messages you may encounter when using Financial Reporter, as well as some suggestions to resolve the most common types of problems.

Chapter 1: Financial Reporter Overview

Financial Reporter is a powerful reporting tool that you can use to manipulate, format, graph, and print general ledger data. You can use Financial Reporter to create financial statements and statement specifications in Microsoft Excel that display data from Sage 300 ERP General Ledger.

Financial Reporter includes the following screens for working with financial statements:

- **G/L Print Financial Statements.** You use the G/L Print Financial Statements screen to print financial statements.

Note: All Sage 300 ERP financial statements are Excel spreadsheet files that contain the functions required to read general ledger data.

You can print using one of the sample statements that come with General Ledger, or you can use a custom report specification that you create using the G/L Statement Designer.

For more information about the sample statements that are included with General Ledger, see "Sample Financial Statements" (page 87).

For instructions on printing financial statements, see "G/L Print Financial Statements Screen" (page 81).

- **G/L Statement Designer.** The G/L Statement Designer is an add-in program that works with Microsoft Excel. You use it to create customized statement specifications, and you can use it to generate the statements.

When you open the Statement Designer from the Financial Reporter folder, and then click **Start**, Excel opens with the Financial Reporter functions automatically loaded. These functions let you retrieve and work with data from your Sage 300 ERP company database.

Note:
The spreadsheet add-in is available only when you start Excel from the Statement Designer screen in Sage 300 ERP.

Microsoft Excel is not included with Sage 300 ERP General Ledger. If you want to use Excel to create financial statements, you must purchase it

separately. (You can install Excel before or after installing General Ledger.)

For more information, see "G/L Statement Designer" (page 30).

After you create a report using the Statement Designer, you can print it at any time using the Print Financial Statements screen or using the FR View command from the FR menu in Excel.

Note: There are some differences when printing a statement using the Print Financial Statements screen compared with using the Statement Designer. For more information, see "Printing Financial Statements" (page 77)

Important! You must purchase and install Microsoft Excel separately before you can use the Statement Designer.

Key Financial Reporter Concepts

Financial Reporter is based upon a few simple concepts:

- **Excel Worksheets with Financial Reporter functions.** Financial statements are Microsoft Excel spreadsheets that use special functions to extract data from the Sage 300 ERP company database.

You can place Financial Reporter functions anywhere in a spreadsheet. The spreadsheet program looks up the General Ledger values when it recalculates the spreadsheet. For information on Financial Reporter functions, see "Financial Reporter Functions" (page 105).

You can also use any other spreadsheet functions you want to further manipulate that data.

- **Financial Statement Specifications.** A financial statement *specification* is a structured description of a statement you want to produce. Financial Reporter creates a report based on the statement specification and the options you select when you print or view the final statement.

Statement specifications allow you to assign default functions and formulas to columns of the spreadsheet, and to specify whether a range of accounts will be expanded to many rows on a final statement.

Statement specifications make statements easier to create and more flexible, but you do not have to use them. You can view an account balance

just by inserting a formula in a single cell, and then recalculating the worksheet.

It is our assumption that most of the statements you create will be generated from statement specifications.

For more information about financial statement specifications, see "About Financial Statement Specifications" (page 27).

- **Flexible Data Selection.** Financial Reporter lets you choose and restrict data at print time by account segment range, account group, fiscal period, and by fiscal set (actual or provisional amounts).

Note:

- When designing statements, keep in mind that a generalized financial statement can be printed with the actual or provisionally-posted amounts of any particular department or division. However, the transaction - related commands, FRTRN, FRTRNA, FRTRNDR, and FRTRNCR, do not handle provisional amounts. If you use these commands, only actual amounts are included in the report.
- If you include rollup accounts, be sure you designed the rollup group in such a way that you do not end up with doubled amounts in the report.
- When creating a financial report, you can enter formulas that allow you to drill down to associated transactions in the resulting report.

Producing Financial Statements

Producing financial statements from General Ledger data involves three broad processes:

1. Designing the chart of accounts.
2. Creating a financial statement specification.
3. Printing the financial statement.

Designing the Chart of Accounts

When you set up the ledger, decide on an account-numbering and classification scheme to suit your financial reporting needs. A well-designed chart of accounts will simplify the job of designing and maintaining financial statement specifications.

Important! Make sure that the account segment is the first segment in the account structures you create. Financial Reporter can select accounts more easily when the account segment is first.

For more information on designing the chart of accounts, see "Designing a Chart of Accounts," in Chapter 1 of the General Ledger User's Guide.

Creating a Financial Statement Specification

A financial statement specification defines the format and contents of a financial statement.

Financial Reporter includes several sample report specifications that you can use to print standard financial statements.

If you want to create special statements for your company, we suggest that you customize one of these standard statements.

For an overview and a few short lessons on creating financial statements, see the "Financial Reporter Tutorial" (page 7).

For more detailed information on creating specifications, see "Designing Financial Statements" (page 25).

Printing Financial Statements

After creating specifications, use the Print Financial Statements screen to select the specification you want to print.

To print a statement, you select the report you want to print, select from a variety of print options, and then click **Print**. Excel gets the data, prints it, and returns you to the Company Desktop.

For more information about printing financial statements, see "Printing Financial Statements" (page 77).

Chapter 2: Financial Reporter Tutorial

In this tutorial, you will learn:

1. How to use the Financial Statement Designer to construct financial statements.
2. How specification files generate financial statements.
3. How to use tools such as FR Paste and FR View.

Before you create new statements or modify existing specification files (such as those included with General Ledger), read and perform the exercises in this tutorial to familiarize yourself with the product.

Note:

- The lessons in this tutorial use sample data included with System Manager. For information about how to install and refresh sample data, see the System Manager help and documentation.
- The lessons in this tutorial assume that you are using Microsoft Excel 2007 or later.

About the Statement Designer

You use the Financial Statement Designer to create, edit, and test financial statements and financial statement specifications. It provides add-in programs that you use in Microsoft Excel to retrieve and manipulate Sage 300 ERP data.

Note: Financial Reporter relies on the capabilities of Microsoft Excel to create financial statements using Sage 300 ERP data. For more information about using Excel, refer to the Excel help or documentation.

The Financial Statement Designer can interpret a "report specification" (a set of instructions for creating a report) and generate a financial report. When you open the Financial Statement Designer, Sage 300 ERP opens an Excel spreadsheet using a macro that adds Financial Reporter commands and functions.

For more information, see "G/L Statement Designer" (page 30).

About Report Specification Files

A report specification file is a spreadsheet with specific commands and functions that Financial Reporter uses to produce a financial statement. For example, it can specify the following information:

- Data to include in each column of a financial statement.
- Which accounts will be reported in each row or group of row.
- Print layout for the statement.

Statement specifications are generalized, so the same specification file can be used over and over again to produce financial statements for different departments and different time periods. For example, a single specification file can print balance sheets for any department in your company as of the last day of any fiscal period in your fiscal year. For more information, see "Financial Reporter Overview" (page 3).

Lesson 1: Using Formulas to Retrieve G/L Data

This lesson introduces Statement Designer functions and demonstrates how to construct basic statements that extract financial data from your general ledger.

Before you start:

1. Sign in to a sample company database.

Sage 300 ERP includes two sample databases you can use: SAMINC and SAMLTD. SAMINC has a single-currency general ledger with a US dollar functional currency. SAMLTD has a multicurrency general ledger with a Canadian dollar functional currency.

- a. Open Sage 300 ERP.
- b. Select **SAMINC** or **SAMLTD**.
- c. Enter ADMIN in the **User ID** and **Password** fields, and then click **Open**.

2. Open the Statement Designer.

- a. Open **General Ledger > Financial Reporter >**

Statement Designer.

b. On the screen that appears, click **Start** to open a new Excel spreadsheet.

3. Turn off spreadsheet recalculation in Excel.

If spreadsheet recalculation is on, Excel will query the Sage 300 ERP database every time you enter a formula in the worksheet or navigate away from the FR View screen.

a. Click **File > Options**.

b. On the **Formulas** tab, in **Calculation options**, select **Manual**.

c. Click **OK**.

Note: To update the worksheet with information from Sage 300 ERP, press the F9 key.

Exercise 1: Adding Basic Account Information

In this exercise, you will enter formulas manually in a spreadsheet to create a basic financial statement with account numbers, descriptions, and balances.

Tip: To avoid losing your work, click **File > Save As**, enter a file name, and save the file. Remember to save your work often as you work through the lessons in this tutorial.

1. In cell F1, type `=FR("Coname")`.

When you press **Enter** or select another cell, the company name appears in F1.


2. In cell E3, type `Account`.

Note: If the content of a cell begins with a letter, the Statement Designer interprets that content as text. However, if you want to enter a number (such as 1999), you must type `= "1999"`, so the program can interpret it correctly.

3. In cell F3, type `Description`.

4. In cell G3, type `Balance`.

5. Select cells E3, F3, and G3.

6. On the **Home** tab of the Excel ribbon, in the **Font** group, click the **Borders**  button to add a bottom border.

7. In cell E5, type `"1000"`.

Note: This is an account number, so you must enter it as a text string so the cell contents can be inserted in other formulas and interpreted correctly by Financial Reporter.

8. In cell F5, type `=FRACCT("ACCTDESC",E5)`.

The cell displays the account description for the account listed in cell E5.

9. In cell G5, type `=FRAMT("BALP",E5)`.

The cell displays the current balance for the account listed in cell E5.

10. Press **F9** to update the worksheet.

You have now created the beginning of a statement, with the headings for three columns and the information from one General Ledger account. Each formula you enter retrieves one piece of information from the General Ledger database. You can save the spreadsheet, and then view updated information the next time you open it.

11. In cell E6, type `"1100"`.

12. Select cells F5 and G5, and then click and drag the bottom right corner of the selection border to copy the contents of F5 and G5 into F6 and G6.

Account	Description	Balance
1000	Petty cash	0
1100		

The Statement Designer updates the copied formulas so they use account 1100 (cell E6) instead of account 1000 (cell E5).


13. Press **F9** to update the information in the copied formulas.
14. Save your work.

The statement now appears as follows:

E	F	G
	Sample Company Inc.	
Account	Description	Balance
1000	Petty cash	0
1100	Accts receivable, intercompany	259781.86

Exercise 2: Adding Column Totals and Formatting Columns

In this exercise, you will add column totals and format columns to prepare your financial statement for review and printing.

1. Select cell G7.
2. On the **Home** tab, in the **Editing** group, click the **Autosum** Σ button.
Excel selects cells G5 and G6.
3. Press **Enter**.
Cell G7 displays the sum of cells G5 and G6.
4. Select cell G7 again.
5. On the **Home** tab of the Excel ribbon, in the **Font** group, click the arrow beside the **Borders**  button, and then click **Top Border**.
6. At the top of the spreadsheet, click column G to select all cells in that column.
7. Right-click the column header for column G, and then click **Format Cells**.
 - a. On the **Category** list, click **Accounting**.
 - b. Accept the default selections for decimal places and currency symbol, or specify different settings if you prefer.
 - c. Click **OK**.
Amounts in column G are formatted as currency, using the decimal places and currency symbol you specified.
8. Click and drag the edges of column headers to adjust the width of columns as needed to display information.
9. Save your work.

The statement now displays two lines and the total balance for those lines, with balances formatted as currency:

E	F	G
	Sample Company Inc.	
Account	Description	Balance
1000	Petty cash	\$ -
1100	Accts receivable, intercompany	\$ 259,781.86
		\$ 259,781.86

After creating your financial statement

- Continue to experiment with formatting commands by formatting and aligning column labels.
- Click **File** > **Print** to see a preview of the printed statement.

Lesson 2: Using FR Paste to Insert Formulas

This lesson introduces FR Paste, an extremely useful command that you can use to quickly create formulas, look up account numbers, or define account selection criteria.

Exercise 1: Applying the FRACCT Function

In this exercise, you will use the FR Paste Function screen and the FRACCT function to search a range of accounts for words appearing in the account description.

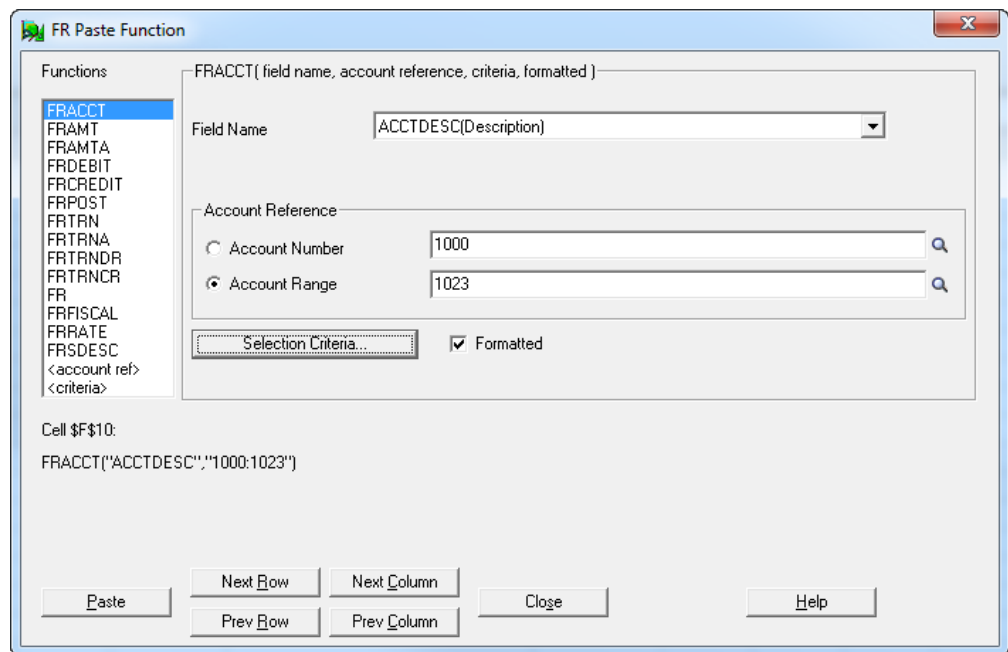
1. Select cell F10.
2. On the **Add-Ins** tab of the Excel ribbon, click the arrow beside **FR**, and then click **FR Paste**.
3. On the FR Paste Function screen, specify a range of account descriptions to search.
 - a. On the **Functions** list, click **FRACCT**.

The syntax for FRACCT (field name, account reference, criteria, formatted) appears to the right of the **Functions** list.
 - b. On the **Field Name** list, select **ACCTDESC(Description)**.

- c. In the **Account Reference** group, select the **Account Range** option.
- d. Specify a range of accounts.
 - i. In the first field in the **Account Reference** group, enter 1000.
 - ii. In the second field in the **Account Reference** group, enter 1023.
- e. Leave the **Formatted** option selected.

You have now created a formula that instructs Financial Reporter to scan the descriptions of every account in the range you specified, and to return any words that are common to all account descriptions in that range. (In this example, the word that appears in every account description is "Sales.")

The formula to be pasted into the spreadsheet appears below the **Functions** list.



4. Click the **Paste** button to paste the formula into cell F10.
5. Click **Close** to close the FR Paste Function screen.

In the spreadsheet, the word "Sales" appears in cell F10.

6. Save your work.

Exercise 2: Applying the FRAMT Function

In this exercise, you'll use the FR Paste Function screen to create a formula that uses the FRAMT function to calculate the net change for the second quarter of the current year so you can view sales for the quarter.

1. Select cell F10.
2. On the **Add-Ins** tab of the Excel ribbon, click the arrow beside **FR**, and then click **FR Paste**.
3. On the FR Paste Function screen, click the **Next Column** button.
The cell reference (below the **Functions** list) changes to \$G\$10.
4. Specify a range of amounts to search.
 - a. On the **Functions** list, click **FRAMT**.
 - b. In the **Field Name** field, select **NET#QTD(Net Quarter # to Date)**.
 - c. On the **Fiscal Designator** list, select **A** (for Actual monetary figures).
 - d. In the **Account Reference** group, select the **Account Range** option.
 - e. Specify a range of accounts.
 - i. In the first field in the **Account Reference** group, enter 1000.
 - ii. In the second field in the **Account Reference** group, enter 1023.
 - f. If any accounts in the range are members of a rollup group and you want to view rolled-up amounts, select the **Use Rolled Up Amounts** option.

The formula to be pasted into the spreadsheet appears below the Functions list.

FR Paste Function

Functions: FRACCT, **FRAMT**, FRAMTA, FRDEBIT, FRCREDIT, FRPOST, FRTRN, FRTRNA, FRTRNDR, FRTRNCR, FR, FRFISCAL, FRRATE, FRSDDESC, <account ref>, <criteria>

FRAMT(field name, account reference, criteria, currency)

Field Name: NET#QTD(Net Quarter # to Date) #

Fiscal Designator: A Year:

Account Reference:

Account Number: 1000

Account Range: 1023

Selection Criteria... Currency Options...

Use Rolled Up Amounts

Cell \$G\$10:
FRAMT("ANET1QTD";"1000:1023")

Paste Next Row Next Column Close Prev Row Prev Column Help

5. Click the **Paste** button to paste the formula into cell G10.
6. Click **Close** to close the FR Paste Function screen.

In the spreadsheet, the net quarter to date amount appears in cell G10. (You may need to press **F9** to recalculate.)

7. Save your work, and then close Excel.

Lesson 3: Creating a Financial Report Specification

This lesson introduces the FR Paste Function screen, and demonstrates how to use it to create a financial report specification and then generate a report that compares current assets to current liabilities in the sample General Ledger.

Exercise 1: Adding a Comment

Enter a comment to explain the purpose of the report.

1. In the Excel spreadsheet you used for the previous two lessons, click **File > New > Blank workbook**.
2. Select cell A1.

3. Type `..This is a short financial report`, and then press `Enter`.

Note: Information in column A preceded by two periods is treated as a comment and does not appear in financial reports.

Exercise 2: Creating a Default Specification Row

Most financial reports contain the same kind of information in each row of the report. To make it easier to define statements in Financial Reporter, you can define a default row specification that will be used throughout the report. The default row specification stays in effect until you define another default row specification.

In this exercise, you will create a default row specification that will produce a report with two columns: one containing account descriptions, the other containing the current account balance.

1. On the **Formulas** tab, in the **Formula Auditing** group, click the **Show Formulas** button.

Instead of calculated values, the spreadsheet now displays formulas you enter.

Tip: To toggle between showing formulas and calculated values, press `Ctrl+`` (the grave accent key, located to the left of the number 1 key at the top left corner of the keyboard).

2. In cell A2, type `\\`.

Two backslashes indicate that the spreadsheet row contains default column functions to be used in subsequent rows.

3. In cell D2, type `D`, and then press `Enter`.

`D` instructs Financial Reporter to print the details of each account on a separate row of the spreadsheet.

4. Select cell E2.
5. On the **Add-Ins** tab of the Excel ribbon, click the arrow beside **FR**, and then click **FR Paste**.
6. On the FR Paste Function screen, select the account description.
 - a. On the **Functions** list, select **FRACCT**.
 - b. In the **Field Name** field, select **ACCTDESC(Description)**.

- c. Click **Paste**, and then click **Close**.

Cell E2 displays this formula:

```
=FRACCT("ACCTDESC")
```

Note: This formula does not refer to a specific account number. Financial Reporter will add account references when it uses this default specification to view the report.

7. Select cell F2.
8. On the **Add-Ins** tab of the Excel ribbon, click the arrow beside **FR**, and then click **FR Paste**.
9. On the FR Paste Function screen, select the current period balance.
 - a. On the **Functions** list, select **FRAMT**.
 - b. In the **Field Name** field, select **BALP(Balance Current Period)**.
 - c. Click **Paste**, and then click **Close**.

Cell F2 displays this formula:

```
=FRAMT("BALP")
```

You have now created the default specification row.

	A	B	C	D	E	F
1	.. This is a short financial report					
2	<u>\\</u>			D	=FRACCT("ACCTDESC")	=FRAMT("BALP")
3						

Exercise 3: Adding Column Headings

To create column headings (or any text that you want in the final report), simply leave cell A of the row containing the headings blank. This row will appear "as is" on the report.

1. In cell E3, type **Account Description**.
2. In cell F3, type **Balance**.
3. Select cells E3 and F3.
4. On the Excel ribbon, on the **Home** tab, in the **Font** group, click the **Underline** button.

5. Click the column heading for column F to select the column.
6. On the Excel ribbon, on the **Home** tab, format the selected cells.
 - a. in the **Alignment** group, click the **Underline** button.
 - b. In the **Number** group, on the **Category** list, select **Accounting**.

Note: If you are viewing formulas, the content of the selected cells does not appear right aligned. You can press **Ctrl+`** to toggle between viewing formulas and calculated values (which appear right aligned).

Your report specification now includes default row formulas and column headings.

	A	B	C	D	E	F
1	.. This is a short financial report					
2	<u>\\</u>			D	=FRACCT("ACCTDESC")	=FRAMT("BALP")
3					<u>Account Description</u>	<u>Balance</u>

Exercise 4: Adding Account Reference Lines to the Statement

In this exercise, you will add five reference rows to display the following information in the report:

- Current asset accounts
- Total current assets
- Current liability accounts
- Total current liabilities
- Net of assets and liabilities

To add reference rows:

1. In cell A5, type **%%**.

%% is a "wildcard" account reference that instructs Financial Reporter to query all accounts.

2. In cell B5, type **(ACCTGRPCOD=1)**.

This expression restricts the accounts to the account group for Current Assets.

Note: The account group code for Current Assets is 1 in sample data, but may be different for your company.

3. In cell E5, type \.

A backslash instructs Financial Reporter to use the current default formula for this column with the account number specified in column A (subject to the criteria specified in column B).

4. In cell F5, type \.
5. In cell E6, type **Total Current Assets**.
6. In cell F6, type **=SUM(F5)**.

This instructs Financial Reporter to expand cell F5 on the report to include as many rows as there are Current Assets accounts.

This cell reference (F5) will refer to all of the generated rows.

7. In cell A8, type %%.
8. In cell B8, type **(ACCTGRPCOD=5)**.

This expression restricts the accounts to the account group for Current Liabilities.

Note: The account group code for Current Assets is 5 in sample data, but may be different for your company.

9. In cells E8 and F8, type \.
10. In cell E9, type **Total Current Liabilities**.
11. In cell F9, type **=SUM(F8)**.
12. In cell E11, type **Assets Minus Liabilities**.
13. In cell F11, type **=F6-F9**.

Your report specification now includes five reference rows.

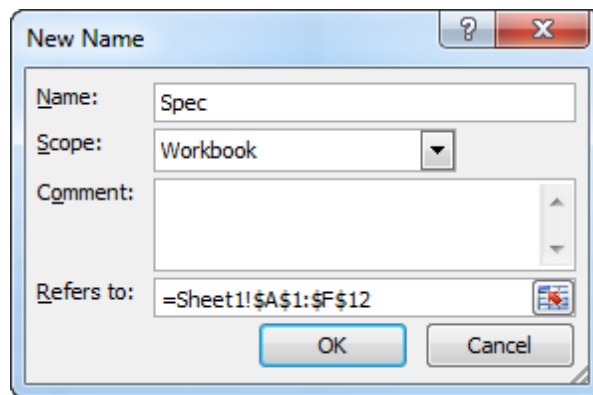
	A	B	C	D	E	F
1	.. This is a short financial report					
2				D	=FRACCT("ACCTDESC")	=FRAMT("BALP")
3					<u>Account Description</u>	<u>Balance</u>
4						
5	%%	(ACCTGRPCOD=1)		\		\
6					Total Current Assets	=SUM(F5)
7						
8	%%	(ACCTGRPCOD=5)		\		\
9					Total Current Liabilities	(ACCTGRPCOD=5)
10						
11					Assets Minus Liabilities	=F6-F9

Exercise 5: Setting the Spec Range for the Statement

Financial Reporter processes all columns and rows of a spreadsheet within a range you specify, called the "Spec range." Before you can print a financial report, you must define the Spec range for the report.

To define the Spec range:

1. Select cells A1 through cell F12.
The entire area of the specification you created is selected.
2. On the **Formulas** tab, in the **Defined Names** group, click **Define Name**.
The New Name screen appears.
3. In the **Name** field, type **Spec**.



4. Click **OK**.
5. Save the report.

You have now created a simple statement specification and are ready to generate the report.

Exercise 6: Generating the Statement

Use the FR View command to generate a financial statement from the specification you created.

You can use FR View to generate two kinds of final reports: one with values and one with formulas.

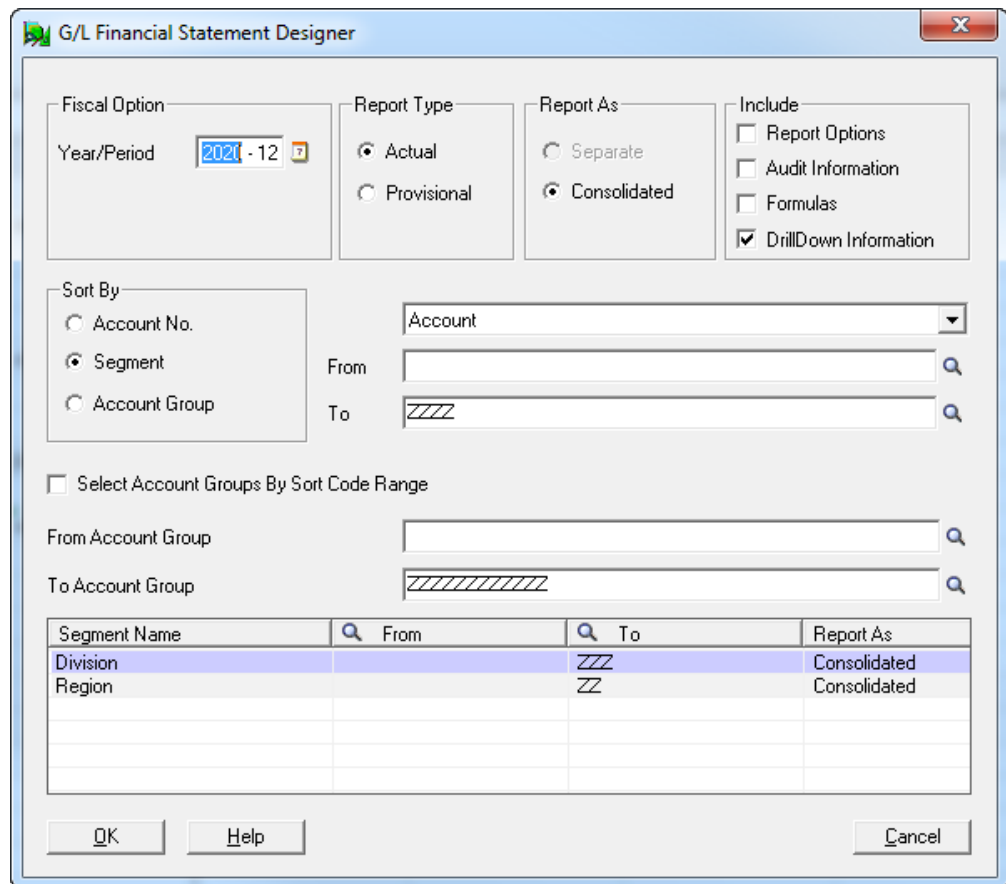
- **Values.** If you generate values, Financial Reporter uses the formulas in the specification to extract the appropriate data from the General Ledger, and inserts the data in the cells on the final report.
- **Formulas.** If you generate formulas (by selecting the **Formulas** check box), Financial Reporter creates all the rows required by the report, but places a formula in the spreadsheet for each piece of data required from the General Ledger.

This provides you with a report that is dynamically linked to your general ledger. At any time, you can see updated versions of a report with formulas simply by recalculating the spreadsheet.

To generate a statement:

1. On the Excel ribbon, on the **Add-Ins** tab, click the arrow beside **FR**, and then click **FR View**.

The G/L Financial Statement Designer screen appears.



2. Click **OK** to accept the default print options.
The report is generated and appears in the worksheet.
3. To display values instead of formulas in the worksheet, on the **Formulas** tab, in the **Formula Auditing** group, click the **Show Formulas** button.
4. To preview the document, click **File > Print**.
5. Save your work and close the statement.

More Suggested Exercises

Now that you have produced a simple financial report, here are a few other ways to explore the capabilities of Financial Reporter:

- **Restrict the range of accounts.**

Use the FR View screen to restrict the range of accounts in the report.

- **Specify a range of accounts.**

On one of the rows of your report, enter a range of accounts "1000:3000".

- **Use wildcards to specify criteria for accounts.**

Use the % wildcard character to replace one or more characters in an account number, or use %% to replace one or more segments.

(Remember that you previously used %% to specify all accounts, and used column B of the report specification to restrict the range of accounts to a single group.)

Example: Try entering 4000%% to specify all accounts starting with 4000 (no matter how many segments they have), or try 4000-100-%.

- **Add a new column.**

Add an additional column G to the report. To do so, use FR Paste to insert a formula in the default row specification. Select **FRAMT**, and remove all but the first parameter (including quotation marks) after pasting the formula in cell G2.

Note: Remember to type \ in the rows of your report specification (for example, G5, G8, and any other rows you have added).

- **Explore options on the G/L Print Financial Statements screen.**

Experiment with selecting different options. For example, you can:

- Change the fiscal year and period for the report.
- Specify whether to print actual or provisionally posted figures (unless one is specifically selected in the spec).
- Specify the order in which records are sorted in the report.
- Specify whether to create a consolidated report or separate reports by account segment.
- Select the **Audit Information** option so you can see which account numbers Financial Reporter selected.
- Restrict the report to ranges of accounts, based on account groups, account segments, or account numbers.

Where To Now?

Now that you are familiar with the Statement Designer and financial report specifications, read "Chapter 3: Writing Report Specifications" for more information about using Financial Reporter to create financial report specifications.

Chapter 3: Designing Financial Statements

You define a financial statement using a report specification. The specification tells Financial Reporter what data is included on the statement, and how it should be formatted.

Because the specification is a Microsoft Excel spreadsheet, you can use standard worksheet formulas, formatting commands, and graphing abilities to modify the report, and you can create multidimensional models to perform further analysis on the data.

Note: Financial Reporter includes a set of standard report specifications that are compatible with any chart of accounts that uses the standard account group classifications and user-defined account groups. You can print financial statements using these standard reports, or you can customize them.

Information Included On Financial Statements

Financial statements can include as many columns of data as you need, and can contain the following account and other information:

- Current or historical balances for a single account or range of accounts.
- Net changes for a fiscal period, quarter, half-year, or year.
- Balances or net changes in functional currency or any of the source currencies defined in a multicurrency ledger.
- Balances or net changes in the reporting currency (if you specified the euro as your functional currency and selected a reporting currency in the Company Profile).
- Comparative figures from complete or to-date time periods.
- Budget figures from fiscal sets.
- Quantities.
- Company information, such as the name, address, telephone number, and company contact.
- The start and end dates of a given fiscal period.

- The exchange rate, given a particular currency, rate type, functional currency, and date.

Note: Accounts with zero balances are not included on the report.

You can select a variety of options for printing a financial statement, including:

- The fiscal year and period.
- Whether to print separate reports for each individual segment or account group, or a single consolidated report.
- Whether to include provisionally posted transactions and rollup amounts.

Data Selection Criteria

Financial Reporter not only gives you access to data, it allows you to select data at print time using a number of powerful features.

The first set of criteria you can use is in the report specification itself.

- You can restrict the accounts specified on a financial report by using selection criteria.

For example, you can select only those accounts in a specified range that have `ACCTTYPE="Income" AND ACTIVESW="Yes"`.

Alternatively, you can select only those accounts with a debit or credit balance.

- You can exclude report lines based on their contents.

For example, you could remove a line from your reports if the value in each column on the line is zero, or you could exclude a line if it represents less than 5% of the total of column G.

- You can use the `FRPOST`, `FRTRN`, `FRTRNA`, `FRTRNDR`, `FRTRNCR` commands to select by posted fields. For more information, see "Financial Reporter Functions" (page 105).

Consolidating Accounts

Financial Reporter lets you specify whether particular accounts or groups of accounts are listed separately, consolidated, or subtotaled whenever the value of a particular account segment changes.

About Financial Statement Specifications

A financial statement specification is a structured description of a statement you want to produce. Financial Reporter creates a report based on the statement specification and the options you select when you print or view the final statement.

Statement specifications allow you to assign default functions and formulas to columns of the spreadsheet, and to specify that a range of accounts will be expanded to many rows on a final statement.

Note:

You do not need to create a statement specification to extract and print information. You can extract and print balances from General Ledger by placing a few formulas in a spreadsheet, recalculating the spreadsheet, and then printing from Excel.

You can also save the spreadsheet, and then use General Ledger's Print Financial Statements screen to print the values in future. If the worksheet does not contain a statement specification, Financial Reporter simply recalculates the spreadsheet, and prints it out.

Layout of a Report Specification

Spreadsheets that contain statement specifications have two separate regions:

- The **Spec range** is the region containing the report specification.
- The **Report range** is the region containing the financial statement produced from the report specification.

The Report range contains a third range called the **Print range**, which excludes all audit information that can be generated in the first columns of the Report range.

Tip: Statements that are not generated from specifications have no Spec range, but you can set a print range to restrict the size of the worksheet for printing.

The statement specification and the report it creates both reside in a single worksheet.

When you generate a financial statement from a specification, the Financial Reporter processes all the specification information in the Spec range, and creates the final report in the Report range.

If you opt to create a separate report for each account segment when you generate the report, Financial Reporter inserts a separate worksheet for each segment into a new workbook.

Rules for Defining the Spec Range, Report Range, and Print Range

The following principles apply to the ranges in a financial statement specification:

- **The Spec range can occupy any columns.** A specification can begin in any column of a spreadsheet. The only requirement is that the first column of the Spec range must be the first column of the specification.

For more information about the Spec range, see "About the Spec Range" (page 71) and "Setting the Spec Range" (page 73).

- **The Report range is created when generating the report.** The Report range is generated from the Spec range when you print the financial report. It contains data that is generated by the report, as well as data extracted from the General Ledger.
- **The Report range starts in column E.** The first four columns of the Spec range (A through D) are reserved for control information for Financial Reporter. All other columns form a template that determines the appearance of the report and the kinds of data that will appear.
- **The Print range starts in column E.** The control information in the first four columns of the specification is replaced by audit information in the report range when you use the FR View command.

Financial Reporter prints a smaller area of the worksheet than the Report range because it excludes columns A to D.

- **The Print range is set by the Spec range.**

About Generating Reports from Specifications

If you print a financial statement using the G/L Print Financial Statements screen, you do not see the report specification. Instead, Financial Reporter opens the financial specification in Microsoft Excel, processes the specification commands in the Spec range of the spreadsheet, and prints the report.

In contrast, if the spreadsheet contains no Spec range, Financial Reporter recalculates the spreadsheet for the ranges of accounts, account groups, or segments specified on the G/L Print Financial Statements screen, and then prints the whole spreadsheet, or the print area defined in the spreadsheet.

Depending on the print destination you specify on the G/L Print Financial Statements screen, you can:

- Preview the report before you print it.
- Send the report via e-mail to a recipient.
- Print directly to a printer, or print to a file.

Generating Statements Using the Financial Statement Designer

When you edit a report specification (using the Statement Designer), you can also test the statement specification you are editing.

To generate the final report, use FR View. For details on using FR View, see "FR Menu Commands" (page 93).

FR View generates the report using the same print options that you use to print a report from the Print Financial Statements screen. However, it provides two additional Include options:

- **Audit information.** If you select this option, Financial Reporter lists the results of the account number references in column A of the report range of the spreadsheet. This information allows you to check the numbers of all accounts included in your statement (as long as you enter D in column D of the report).
- **Formulas.** If you select this option, Financial Reporter inserts a formula in each cell of the final report where you need to insert General Ledger information. You can then update the report at any time by recalculating the spreadsheet.

Important! Spreadsheets with formulas are much larger than standard report specifications. Generating statements that include formulas also takes longer, because Excel calculates the value of each formula as it generates them.

After you generate a report, you can preview it by clicking **File > Print** in Excel.

About Using Selection Criteria

You can specify selection criteria on a default specification line, on individual specification lines, and in formulas. With all these possibilities for account selection, you must be very clear which criteria are actually in effect.

Important! Accounts must meet restrictions and criteria specified on the FR View screen.

The first restriction you place on account selection is with the FR View screen (or with the G/L Print Financial Statements screen). Report-level account range filtering is in effect for any account reference that specifies a range of accounts.

For more information, see "About Selection Criteria for Filtering Accounts" (page 62).

Overriding Account Ranges

You can override FR View screen ranges in two ways:

- By specifying segment codes that are outside the ranges defined on the FR View screen.
- By using the \$ prefix in individual account number references.

Unless you override the FR View screen, accounts must both fall within the specified range and meet other criteria specified on the FR View screen.

If you specify any selection criteria in column B of a default specification line, that criteria is in effect unless you override it.

You can override the criteria on a single line by placing a new criteria expression in column B. The criteria expression is in effect only for the line on which you define it. If you specify a criteria for a single formula in the line, the line criteria is ignored.

G/L Statement Designer

To open this screen:

1. Open **General Ledger > Financial Reporter > Statement Designer**.
2. Click **Start**.

Related tasks:

- "Setting the Spec Range" (page 73)
- "Printing a Financial Statement" (page 79)

Overview

Use the Statement Designer to create or edit a report specification for generating financial statements.

When you open the Statement Designer screen and then click the **Start** button, Sage 300 ERP starts Microsoft Excel with the Financial Reporter add-in.

Important! This add-in is available only when you start Excel from the Statement Designer.

The Financial Reporter add-in is a set of commands that you select from the **FR** menu on the Microsoft Excel ribbon. For more information, see "FR Menu Commands" (page 93).

Tip: Turn on manual calculation in Excel so that formulas are not updated automatically. You can recalculate FR commands at any time by pressing the **F9** key.

Using the Statement Designer to Design Financial Statements

For information on using the Statement Designer to create custom financial statements, see "Designing Financial Statements" (page 25).

For a series of short lessons on using the Statement Designer, see "Financial Reporter Tutorial" (page 7).

For information on the fields that you can use in financial statements, see:

- "Account Master Fields" (page 171)
- "Transaction Fields" (page 173)

Including Information in Printed Financial Statements

You can include the following options when printing financial statements from the G/L Financial Statement Designer by clicking **FR > FR View** on the menu bar:

- Report Options
- Audit Information
- Formulas
- DrillDown Information

Report Options

When you select **Report Options**, the first page of the financial statement displays the following information:

- Statement name
- Fiscal year and period
- Report type (actual or provisional)
- Account processing and sorting order
- Account selection ranges

Including DrillDown Information

On the G/L Print Financial Statements and Statement Designer screens, you can select the **DrillDown Information** option to add drilldown link comments to the generated report.

For more information, see "About FR Drilldown" (page 94).

Including Audit Information

The **Audit Information** option is available only when using FR View in the Statement Designer—it is not available on the G/L Print Financial Statements screen.

When you select **Audit Information**, the statement includes information from the control information columns of the spreadsheet (columns A through D), as well as the report columns that are usually printed.

Including Formulas

The **Formulas** option is available only when using FR View in the Statement Designer—it is not available on the G/L Print Financial Statements screen.

Usually, when you generate a report from a financial report specification, Financial Reporter inserts balances and net amounts from the database into the generated financial report. However, if you select **Formulas**, Financial Reporter creates a financial report from the specification with a formula for each general ledger balance or net that appears in the final report. You can then update that financial report with current database values by recalculating the spreadsheet (pressing **F9**).

The most common type of report that is composed only of formulas is one that keeps financial ratios.

Note: Spreadsheets with formulas are much larger than standard report specifications—and they are less flexible.

Financial Reporter automatically refreshes General Ledger data the next time you load the linked spreadsheet in the Statement Designer. You can also use the G/L Print Financial Statements screen to recalculate and print the report.

If you want to change the report (for example, by adding new accounts in the chart), you must regenerate the report to incorporate the changes in your statement.

Tips:

- To save the linked spreadsheet, save the file under another name, and then remove the report specification from the renamed spreadsheet.
- Keep financial ratios in a formula sheet.

About Totals and Subtotals

Financial statements contain columns of figures that are subtotaled and totaled according to account type.

The most common arithmetical operation involves summing the balances or net changes of groups of accounts at a moment in time, as in the following example:

	Current Balance	Last Year Balance
Petty cash	274.57	358.00
Bank account, US dollars	8,437.54	5,932.90
Bank account, CAD dollars	4,372.96	3,665.39
Total:	13,085.07	9,956.29

If this was a spreadsheet, you would place a formula such as `=SUM(B3:B5)` in each of the "total" cells. This formula would add together the values in cells B3, B4 and B5, and display the total in B6.

Totaling a column of figures with Financial Reporter is just as easy. All you do is refer to the cells or range of cells in the specification, and Financial Reporter will translate the cell references in the final report. You may refer to a single cell, a list of cells, or a cell range.

In the following example, the formula =SUM(F3) will be translated when you generate the report to the appropriate range of cells in the Report range to add the balances of all accounts in the range 1100 to 1300.

A	B	C	D	E	F
\\				=FRACCT("ACCTDESC")	=FRAMT("BALP")
					<u>Current Balance</u>
1100:1300			\		\
				Total:	=SUM(F3)

Note:

Excel does not allow you to specify a negative range of cells as a parameter of SUM. For example, the following SUM formula will not work in Excel: =SUM(-G10:G14).

You can fix the formula by moving the minus sign like this: =-SUM(G10:G14).

In summary, to perform any mathematical operations within the financial report, use standard spreadsheet formulas and functions.

About Rounding on Balance Sheets

If you have spent much time working with financial statements, you know that balance sheets do not balance when you round account totals. You always have to force a balance by adding a rounding difference to one of your accounts or account sections.

The next two spreadsheet examples show two ways to ensure that your balance sheets will balance:

- Example 1 shows a simple mechanism that rounds all balances on the statement, and then forces the totals of rounded assets to balance rounded liabilities.
- Example 2 produces a more theoretically correct balance by summing all unrounded account balances, and then forcing the statement to balance to this sum.

Example 2 makes use of a hidden column of unrounded account data, and so will require a larger spreadsheet and more memory to run.

Example 1: Forcing a Rounded Balance Sheet to Balance

This sample statement rounds and sums all printed figures on each side of the balance sheet, and then forces liabilities and owner equity to balance with the

assets. Any rounding differences are lumped with owner equity.

The specification for the statement includes a few rows that must be hidden before generating the final report (row 11 and row 14).

	A	B	C	D	E	F
1	\\ACCT			D	=FRACCT(*ACCTDESC*)	=ROUND(FRAMT("BALP"),-3)
2					Description	Current Balance
3						
4					Assets:	
5	1000:1199				\	\
6					Total assets:	=SUM(F5)
7						
8					Liabilities	
9	3000:3899				\	\
10					Total liabilities	=SUM(F9)
11	3900:3999			T		\
12					Equity	=SUM(F11,F14)
13					Total liabilities & equity	=F6
14						=F6-F10-F11

This specification performs the following actions:

1. Prints the rounded balances of all asset accounts it retrieves from the general ledger using `=ROUND (FRAMT ("BALP") , -3)`.
 The `-3` indicates the number of digits to the left of the decimal place to which the value is rounded (in this case, thousands).
 Because `D` is specified in column D, each account is printed on a separate line. (This is on row 5.)
2. Totals the rounded balances of all asset accounts. (Row 6.)
3. Prints the rounded balances of all liability accounts it retrieves from the general ledger using the same formula. Again, each account is printed on a separate line. (Row 9.)
4. Totals the rounded balances of all liability accounts. (Row 10.)
5. Retrieves a single balance for equity. This amount is calculated on a hidden row, because the difference between the rounded assets and the rounded liabilities plus equity will be added to the equity section. (Row 11.)
6. Calculates the difference between the balances. (Row 14.)
7. Sums the difference between the balances and the equity amount. (Row 12.)
8. Displays the balance for total liabilities and equity. Since this balance must match assets, the specification uses the same total. (Row 13.)

Note: If any accounts are missing from this statement, it will still balance (because we have forced a balance between the assets and the liabilities plus equity).

Example 2: Forcing a Balance to the Rounded Total of Unrounded Account Balances

The following statement example shows another way to set up a rounding mechanism in balance sheets to handle rounding differences.

This method has two main advantages over the previous example:

1. It more accurately reflects an unrounded balance sheet, because the final balance is derived by summing unrounded balances, instead of by summing rounded ones.
2. It is self-auditing.

In example 1, you are forcing assets to balance liabilities and equity, so even if you leave accounts off the statement, the report will balance. In example 2, the rounded statement will not balance if you leave out an account.

Before generating the final report, you must hide column F, as well as rows 6, 9, and 10. (See the final report example, below.) For information about hiding columns and rows, see "About Formatting Financial Statements" (page 68).

	A	B	C	D	E	F	G
1	\ACCT			T		=FRAMT("BALP")	=ROUND(\$F1,-3)
2					Description		Current Balance
3							
4	1000:1199				Cash	\	\
5	1200:1299				Receivables	\	\
6	1300:1350					\	\
7					Fixed assets		=SUM(G6,G10)
8					Total assets:		=SUM(F4,F5,F6)
9							=SUM(G4,G5,G6)
10							=G8-G9

This specification performs the following actions:

1. Inserts the unrounded balances of all accounts in column F of the spreadsheet, and inserts the rounded balances of all accounts in column G.
2. Calculates a rounded sum of column F (in G8) and column G (in G9) of the spreadsheet.

Note: The rounded total to which we want to balance is the total in G8. The total in G9 contains the cumulative effect of all rounding differences.

3. Calculates the difference between the rounded totals (G8 and G9) in G10 of the spreadsheet.
4. Adds the difference between the totals to the last range of accounts (in row 7 of the spreadsheet).

By adding the rounding difference to the last group of figures, we have forced the figures in column G to equal the total in G8.

You handle the credit side of the balance sheet using a similar approach, summing all liabilities with owner equity, and then deciding where to put the difference between the sums of the rounded and unrounded balances.

The generated statement includes rows and columns that would be hidden on the final report (shown in bold):

Rows and Columns Hidden on Report

Description		Current Balance
Cash	37,657.35	38,000
Receivables	89,576.73	90,000
	356,526.85	357,000
Fixed assets		356,000
Total assets:		484,000
		485,000
		(1,000)

About Verifying Account Data

You can use two methods in Financial Reporter to test account information to decide whether it should appear in a report.

- **Use a formula in column C to test the contents of a line.** You can specify conditions for excluding generated lines from a report based on the contents of the line.

For more information, see "About Columns in Report Specifications" (page 39).

- **Use FR functions with spreadsheet functions.** Financial Reporter functions can replace parameters of spreadsheet functions, so you can test the contents of fields before printing the report, or manipulate them as you wish.

Example:

To specify that a balance is printed only if it exceeds 6000, use `=IF (FRAMT ("BALP", "1000") > 6000, FRAMT ("BALP", "1000"), 0)`.

To print the average value of two accounts, use `=AVERAGE (FRAMT ("BALP", "1000"), FRAMT ("BALP", "2000"))`.

About Optional Fields in Financial Reports

You can print account optional fields and transaction optional fields detail using Financial Reporter.

- You can retrieve account optional fields using FRACCT or FRPOST.

Note: A field name for an account optional field is the original optional field name with the prefix `A`. You must include the period following the letter `A`.

- You retrieve transaction optional fields using FRPOST.

Note: A field name for a transaction optional field is the original optional field name with the prefix `T`. You must include the period following the letter `T`.

If an FR command retrieves data from more than one transaction, you can consolidate optional field data for Amount, Integer, and Number optional field types in the following ways:

- You can print the optional field value of the first retrieved record that has optional field values.

If the field specified in the first parameter of the FRACCT or FRPOST command is an amount, integer, or number field, and is appended with `U`, only the first optional field value is reported.

- You can print a consolidated total that sums up all values from the retrieved optional fields.

If the specified field name is not appended by anything or is appended by `C`, a consolidated total is printed.

About Columns in Report Specifications

Most of a financial report specification is a template for the report it produces. For example, all report formatting (such as column widths, fonts, highlighting and underlining) appears on the financial report specification.

The first four columns of the report specification (columns A through D) contain important control information.

Note: You can begin a specification in any column, as long as the Spec range begins with the same column.

Sample Report Specification

In this example, row 1 is a default row. To use the default formulas in subsequent rows, place a backslash in the appropriate spreadsheet cells.

	A	B	C	D	E	F
1	\\				=FRACCT("ACCTDESC")	=FRAMT("BALP")
2					<u>Account Description</u>	<u>Current Balance</u>
3	1020:1400			\		\

Column A

The contents of column A of each row (the first column of the Spec range) determine the purpose of all columns in the row. There are five possible types of rows in a report specification:

- **Comment row.** If column A starts with . . (two periods), the row is a comment row.
- **"As is" row.** If column A is blank, the row is part of the report and will appear "as is" on the final report.
- **Default row.** If column A starts with \\, the row is used for setting up defaults for the remaining rows on the report.

You can have more than one default specification row; each applies to the rows between it and the next default row.

- **Title row.** If column A starts with \T, the row is used to define title lines on the final report. You can have up to five title rows, which will appear at the top of each tab of the report (immediately under the header lines).

- **Body specification row.** Rows that start with account number references are called "body specification rows."

Note:

- If column A contains any other data, Financial Reporter assumes that the data is a reference to one or more account numbers.
 - If an account number appears in column A, it generally means that all printed columns in the row will contain data from that account.
-

Columns B, C and D

Columns B, C and D filter accounts specified in column A (columns 2 through 4 of the Spec range) to refine the account selection. For example:

- Column A can specify a range of accounts.
- Column B can contain a filter to restrict the range of accounts in column A to a particular account group (or to an account type or account name).

Column B can also refer to the filter for posted transactions, if Column D refers to listing by posted transaction details or by posted transaction consolidated details.

For more information, see "About Selection Criteria for Filtering Accounts" (page 62).

- Column C can remove any lines from the report that have zero balances (use **Z** to omit zero-balance lines) or meet a condition such as "balances less than \$1,000".
- Column D can consolidate the balances of the range of accounts, consolidate by account segment, list each account separately, consolidate all values from retrieved optional fields, or print the optional field value of the first retrieved record. This can also be consolidated by transaction date and posting sequence.

Use **T** to generate a single total line for an account range. If you leave column D blank, or specify a **D**, Financial Reporter will list the details for each account in the range.

Column D constants for use in the spec area are the indicators for listing by transaction details, by transaction consolidated total, and by transaction total. Values must begin with **P**.

Column D Constants

List By	Cell Value of Column D
Transaction details in posted transaction order	PD
Transaction consolidated total	PT
Transaction consolidated by account	P(POSTTRAN)
Transaction consolidated by journal date	P(POSTDATE)
Transaction consolidated by posting sequence	P(POSTSEQ)

Transactions can also be listed by consolidated account segments and account groups as listings by accounts. When consolidating by a specific account order in listing by transactions, the column D value must start with **P** instead of with **D**.

Example: **P**(ACSEGVAL02) is the consolidation of transactions with account segment 2 retrieving records from a transaction, while **D**(ACSEGVAL02) is the consolidation of account history with account segment 2 retrieving records from an account.

To list the details by transaction, the spec must provide a correct sorting order, as illustrated in the following table:

Sorting Order

Exclusive Sorting Order	Meaning
POSTTRAN	By Posted Transaction, in account order
POSTDATE	By Date Order
POSTSEQ	By Posting Sequence Order
POSTACCT	By Account Posting Sequence

Note:

- If the account reference is specified with exclusive sorting order at column A from a spec line and the order is an account order (for example, 1000:9000|ACCT), Financial Reporter does not generate the transaction details of the spec line.
- If the consolidation value in column D is **P**(POSTTRAN), the sorting order must be **POSTTRAN**.

- If the consolidation value in column D is P (POSTDATE) , the sorting order must be POSTDATE.
- If the consolidation value in column D is P (POSTSEQ) , the sorting order must be POSTSEQ.
- If the consolidating total is retrieved by any defined account switches, like P (ACSEGVAL02) , it can be sorted by any defined account order, similar to listing by accounts.
- Listing by transaction is only limited to the inquiry of transaction records from the inquired period.
- Use T to generate a single total line for an account range. If you leave column D blank, or specify a D, Financial Reporter lists the details for each account in the range.

Column E

The report template actually starts in Column E, the fifth column of the Spec range. Any value or formula placed in the report template area is part of the final report.

The following example shows a report specification displayed in formula view.

	A	B	C	D	E	F	G	H	I
1	..				Specification UNIV9				
2	..				This specification will produce an expense				
3	..				schedule for the current fiscal period,				
4	..				quarter, and year to date.				
5						=FR("CON			
6						Schedule			
7						=For the			
8									
9	\\		Z	T			=FRAMTA("NETP")	=FRAMTA("NETQ")	=FRAMTA("NETYTD")
10							Current	Quarter	Year
11							Period	To Date	To Date
12	=6000:6999"		D		=FRACCT("ACCTDESC")		\	\	\
13									
14							=SUM(G12)	=SUM(H12)	=SUM(I12)
15									

In this example, the first three lines of column F that appear on the report are:

- =FR ("CONAME") , a Financial Reporter function that displays the company name on the statement.

- The text "Schedule of Expenses."
- The text and function ""For the period ending " &FR ("END") ." The function inserts the period end date from the database.

Row 9 of the specification sets the default contents of statement columns. Column A of this row starts with two backslashes.

The next row with text contains the headings for columns G, H, and I. These headings are printed "as is."

Note: You use formatting commands in Excel to underline these column headings.

The next row with text will be expanded on the printed report to include all accounts in the range between 6000 and 6999 that meet other selection criteria specified in cells B, C, and D, or entered at print time on the Print Statements screen. In the spreadsheet's formula view, the row looks like this:

12	= "6000:6999"	D=FRACCT("ACCTDESC")		\	\	\
----	---------------	----------------------	--	---	---	---

The backslash (\) in the three columns on the right indicates that each cell value will be generated from the default formula set for the column. (Financial Reporter inserts the account reference in column A into any default formula that requires the account reference parameter. For example, the default formula for column G is =FRAMTA ("NETP") . FRAMTA is a Financial Reporter function that prints the account period balances or net amounts from the account fiscal sets. In this case, the formula specifies the net amount for the current period.)

When Financial Reporter processes this cell of the statement template, it expands the formula with the account reference from column A. (For example, =FRAMTA ("NETP", "6000") .)

The remaining two columns also use a default formula; in this case, bringing in the net changes for the quarter to date and the year to date.

The final row in our example is the total line:

=SUM(G12)	=SUM(H12)	=SUM(I12)
-----------	-----------	-----------

Note: You use formatting commands in Excel to format cells with top and bottom borders.

Notice also that the total formula for each column refers to a single cell (or list of cells) in the specification range. In our example, the single cell in the specification range formula will be replaced in the report range formula by a

range reference that contains as many rows as there are accounts in the account range specified on line 12.

About Calculated Columns

Calculated columns contain figures resulting from calculations on data in other columns of the statement.

To define a calculated column, use standard spreadsheet formulas in the default column specification row. For example:

	Current Balance	Last Year Balance	Curr/ LYear
Petty cash	274.57	358.00	.77
Bank account, US dollars	8,437.54	5,932.90	1.42
Bank account, CAD dollars	4,372.96	3,665.39	1.19
Total:	13,085.07	9,956.29	1.31

In this statement, the default formula for the last column (column H on a report specification) is $= (F1/G1)$. The formula states that this column contains the value of column F divided by column G.

	A	B	C	D	E	F	G	H
1	\\				=FRACCT(*ACCTDESC*)	=FRAMT(*BALP*)	=FRAMT(*BALP.L1*)	=(F1/G1)
2						Current	Last Year	Curr/
3						Balance	Balance	LYear
4	1100:1300			\		\	\	\
5					Total:	=SUM(F4)	=SUM(G4)	=(F5/G5)

When the report is generated, Financial Reporter adjusts the relative cell references on each line.

Using Currency Exchange Rates in Column Calculations

Financial Reporter can use exchange rates maintained in Sage 300 ERP, so you can create financial reports in any currency you maintain, using the exchange rates from any fiscal period.

To retrieve exchange rate information, you use the FRRATE function to get exchange rate information. For more information, and for examples of how to use this function, see "FRRATE" (page 147).

Note: The rate returned by the FRRATE function is always used as a multiplier to convert source currency to functional, even if you defined the rate as a divisor. If the rate is defined in the System Manager as a divisor, Financial Reporter returns the reciprocal of the rate.

About Default Column Specifications

In a financial statement specification, default column specifications are defined in the first line, and then used with a range of accounts in the last line.

The following example illustrates default column specifications and specification lines that apply to a range of accounts:

	A	BCD	E	F	G	H	I
9	\\	Z T			=FRAMTA("NETP")	=FRAMTA("NETQ")	=FRAMTA("NETYTD")
10					Current	Quarter	Year
11					Period	To Date	To Date
12	=6000:6999	D	=FRACCT("ACCTDESC")		\	\	\

The line starting with two backslashes \\ in column A contains default column specifications. These default column specifications are in effect until you define a new set of defaults.

To use the currently defined default column specification, you simply type backslash (\) into a cell, as in the last line of the example above.

Note:

- You can follow \ with - or + to print the inverse or the absolute value of the formula result.
- Remember that the actual report area starts from column E.

Advantages of Using Default Column Specifications

Both of the following examples print exactly the same information. The first example uses a complete formula to get each value; the second example uses default column specifications and an account reference to a range of accounts.

For each of the following examples, assume that accounts 1100, 1200, and 1400 are consecutively numbered accounts in the general ledger.

Example 1: Using Formulas to Place Values

In this example, you require one formula to print each piece of information:

A	B	C	D	E	F
				<u>Account Description</u>	<u>Current Balance</u>
				=FRACCT("ACCTDESC","1020")	=FRAMT("BALP","1020")
				=FRACCT("ACCTDESC","1200")	=FRAMT("BALP","1200")
				=FRACCT("ACCTDESC","1400")	=FRAMT("BALP","1400")

To print the current balance of 200 accounts, along with their descriptions, you would require 400 formulas—and you would have to change the specification each time you added to the chart of accounts.

Example 2: Using Default Column Specifications to Place Values

In this example, you use a default column specification to place values:

A	B	C	D	E	F
\\				=FRACCT("ACCTDESC")	=FRAMT("BALP")
				<u>Account Description</u>	<u>Current Balance</u>
1020:1400			\		\

This example demonstrates how Financial Reporter lets you define a report line that applies to a range of accounts. At print time (or when using FR View in the Financial Statement Designer), the single line will be expanded to as many lines as there are accounts in the range.

In other words, a report that prints the current balances of all accounts in the general ledger can be defined by a single line that specifies the range of all accounts.

Note:

- The default column specifications line begins with two backslashes (\\).
- The default column specification assigns a particular formula to the backslash (\). In our example, the formulas have used only Financial Reporter functions.

Alternatively, you could assign a value to \, or make use of spreadsheet functions in your formulas. You can follow \ with - or + to print the inverse or the absolute value of the formula result.

- The default column specifications are exactly the same as the formulas in the first example, except that they do not include the account reference.

When you generate the statement, Financial Reporter inserts the account references for the line into the default formula.

- The account reference is for a range of accounts. The single line in this example will be expanded to as many lines as there are accounts in the range.
- You can use %% to specify all accounts in the ledger. For more information, see "About Account Number References" (page 59).
- Columns B, C, and D may contain selection criteria that affect the range of accounts and whether the final value will be printed at all.

Adding Default Information for Columns B, C, and D

The following example illustrates default values for columns B, C, and D, as well as for the printed columns of the report:

A	B	C	D	E	F
\\	ACCTTYPE="B"	Z	T	=FRACCT("ACCTDESC")	=FRAMT("BALP")
				Account Description	Current Balance
1020:1400				Cash	\

Note that you do not have to specify a backslash (\) in columns B, C or D to inherit the defaults. If you want anything but the default values, you must specify the information you want to display.

Financial Reporter evaluates the last line of the above specification and performs the following actions:

1. Evaluate all accounts in the account number range specified in row 3 to see that they are type "B" accounts.
2. Get the account balance of each account in the range that is a balance sheet account.
3. Total the balances—because T in column D specifies that a single total line will be generated from the account range, rather than one line for each account to list the details.

Note: If you leave column D blank, or specify a D, Financial Reporter lists all details.

4. Check whether the amount in column F is zero (because of the Z in column C). If it is, Financial Reporter does not print the line.

Financial Reporter looks only at the numbers on a line to decide if zero-suppression should take place. In this example, the description in column E does not affect whether the line is printed.

If you do not want to suppress zeroes on a single line, enter the **N** in column C on the line that you want to print.

For details on specifying selection criteria and suppressing lines, see "About Consolidating Account Ranges" (page 55), "About Excluding Lines from Reports" (page 63), and "About Selection Criteria for Filtering Accounts" (page 62).

For more information about Financial Reporter functions, see "Financial Reporter Functions" (page 105).

Sample Default Column Specifications

The following examples illustrate standard financial report formats and the column specifications you use to produce these reports.

Example 1: Balance This Period and Last Period

This example produces a comparative balance sheet.

- Column E lists the current balance.
- Column F lists the balance in the previous period.

	A	B	C	D	E	F
1	\\				=FRAMTA("BALP")	=FRAMTA("BALLP")
2					<u>Current Balance</u>	<u>Balance Last Month</u>
3	1100:1300				\\	\\

Example 2: This Year / Last Year Balances with Percentage of Total Columns

This example produces a comparative balance sheet with four columns of data.

- Column G lists the current balances.
- Column I lists the balances for the corresponding period in the previous year.
- Columns H and J compare each account as a percentage of the totals for the corresponding year.

	F	G	H	I	J
1		=FRAMTA(*BALP*)	=G1/G4%	=FRAMTA(*BALP.L1*)	=I1/I4%
2		Current Year	% of Total	Previous Year	% of Total
3					
4		=SUM(G3)		=SUM(I3)	

Note: The formulas in columns H and J illustrate that the range of accounts is defined in row 3 of the report specification, and the total calculation is in row 4. Financial Reporter recalculates these cell references for the generated report.

Example 3: Period and Year-to-Date Expenses

This example produces a comparative expense schedule with two columns of data.

- Column E lists the expenses this period.
- Column F lists the expenses year-to-date.

	A	B	C	D	E	F
1	\\				=FRAMTA(*NETP*)	=FRAMTA(*NETYTD*)
2					Expenses This Period	Expenses Year to Date
3	6000:8999					

Example 4: Current Period and Year-to-Date Expenses as a Percentage of Sales

This example produces a comparative expense schedule, with each current period and year-to-date expense listed as a percentage of sales.

- The range of expense accounts is defined in row 13, and uses the default formulas defined in row 11 of the report specification.
- The total sales calculation is in row 9.

	F	G	H	I	J
9		=SUM(G8)		=SUM(I8)	
10					
11		=FRAMTA(*NETP*)	=G11/G9%	=FRAMTA(*NETYTD*)	=I11/I9%
12		Current Year	% of Total	Previous Year	% of Total
13					
14		=SUM(G13)		=SUM(I13)	

Note: Financial Reporter recalculates all formula cell references for the generated report.

Example 5: Current Period and Year-to-Date Expenses Compared to Last Year

This example produces a comparative expense schedule with six columns of data.

- Column G lists the current period expense.
- Column H lists the expense for the corresponding period in the previous year.
- Columns J and K list the year-to-date expenses.
- Columns I and L compare each amount as a percentage of the amount in the previous year.

	G	H	I	J	K	L
18	=FRAMTA("NETP")	=FRAMTA("NETP.L1")	=G18/H18%	=FRAMTA("NETYTD")	=FRAMTA("NETYTD.L1")	=J18/K18%
19	Current	Same Month	% of	This Year	Last Year	% of
20	Month	Last Year	Last Year	YTD	YTD	Last Year
21	\	\	\	\	\	\

Note: The range of expense accounts is defined in row 21 of the report specification, but the formulas in I18 and L18 reference the default formula cells that are used in row 21. Financial Reporter recalculates these cell references for the generated report.

Example 6: Side-by-Side Departmental Statements

This example produces a side-by-side departmental comparative balance sheet with three columns of data.

- The processing order is set in column A to Account order.
- Column D indicates that each time the account number changes, Financial Reporter should create a new line.
- Column E lists the name of each account.
- Column F provides the current balance of accounts that meet the criterion of Department A.
- Column G provides the balance of accounts that meet the criterion of Department B.

	A	B	C	D	E	F	G
1	\ACCT		D(ACCT)	=FRACCT("ACCTDESC")	=FRAMT("BALP", "", {ACSEGVAL02 = ""A""})	=FRAMT("BALP", "", {ACSEGVAL02 = ""B""})	
2					Department A	Department B	
3	"1000:2999"			\	\	\	

Using Formulas to Retrieve General Ledger Account Information

In the Financial Statement Designer, you use Excel formulas to insert account record information or fiscal set values anywhere in a financial statement.

Example:

`FRACCT ("ACCTDESC", "1000-333")` inserts the account description from account 1000-333 (for example, "Cost of goods sold").

`FRAMT ("ABALP.2019", "1000-333")` inserts the actual balance of account 1000-333 for the current fiscal period for the year 2019.

You can also insert company information in a financial statement. For example, `FR ("Coname")` inserts the name of the currently open company.

The easiest way to insert Sage 300 ERP financial information is by using the FR Paste function, which you can use to create a formula quickly. For more information, see "About FR Paste" (page 96).

To specify balances and quantities, you use the following syntax:

Financial Information Syntax

Formula	Sage 300 ERP Financial Information	Notes
PBALP	Account balance	If BALP is specified without an A or P prefix for actual or provisional amounts, it will default to the report setting chosen at print time.
PBALP	Provisional balance	
QABALP	Actual quantity	
QPBALP	Provisional quantity	<p>You can specify budget sets according to the edition of Sage 300 ERP you use:</p> <ul style="list-style-type: none"> • Sage 300 Standard ERP includes budget sets 1 and 2 • Sage 300 Advanced ERP includes budget sets 1, 2, and 3 • Sage 300 Premium ERP includes the numbers 1 to 5 for the budget sets (for example, 1BALP or 2BALP).

Tip: You can construct your financial statements by placing a Financial Reporter function at each point where you want to print financial information. However, identifying each item individually can be a time-consuming and unnecessarily rigid way to create a statement. Developing a statement specification with default formulas for each column, indicating the group of accounts to which the column formulas will apply, is a more flexible and efficient way to create your statement.

About Account Order in Financial Statements

In financial statements, Financial Reporter lists ranges of accounts in the order set in the financial report specification or (if not set in the specification) in the order you specify when printing.

You can sort accounts by any account segments, and you can specify a range of values for each segment you sort by. You can also sort by account group, using the formula `\\acctgroup` or by account-sorted group, using the formula `\\acctgroupsort`.

Example:

If your accounts have two segments, the account reference `100~120-A~B` generates two possible account listings, depending on the sort order you specify:

- If accounts are sorted by segment 1, they are listed like this:
 - 100-A
 - 100-B
 - 120-A
 - 120-B
- If accounts are sorted by segment 2, they are listed like this:
 - 100-A
 - 120-A
 - 100-B
 - 120-B

Specifying Order at Print Time or in the Default Row Specification

The default order for processing accounts is the order specified at print time on the Financial Statements screen (or the FR View screen when editing specifications).

You can also enforce the order of processing accounts in ranges for all or part of a report by specifying the order in the first column of the default row specification (immediately after the backslashes "\\").

You may process account numbers in any of the following orders:

- \\ACCTID (account number order)
- \\ACCT (account segment order)
- \\ACCTGROUP (account group order)
- \\ACSEGVAl_n (account segment #n order)
- \\Segment_desc (to list accounts by the segment with description Segment_desc. For example, \\REGION)

The order you specify determines:

- The order in which accounts in expanded account references are printed.
- The ease (and, consequently, the speed) with which the accounts can be retrieved by Financial Reporter.

In the following example, account numbers have two segments: a department segment and an account segment. The department segment is first (not recommended), and there are only two department codes in the ledger, but a large number of accounts. The first account segment in the ledger is 1000.

If Financial Reporter processes accounts in order by the account segment, it will only have to process accounts 1000 through 1100 (specified like this).

A	B	C	D
\\ACCT			
%1000~1100			

The accounts will appear in the following order on the report (by account segment, then by department):

- A-1000
- B-1000
- A-1100
- B-1100

If, on the other hand, Financial Reporter processes accounts in account number order (which lists the department segment first) it will have to scan each account in the ledger to see if it matches the range.

A	B	C	D
\\ACCTID			
%-1000~1100			

The final report will also be in account number order, which, in this case, will be in department order for the indicated range.

- A-1000
- A-1100
- B-1000
- B-1100

The order of segments in an account number is defined by the account's structure code—not by the order of segments shown on the G/L Options screen in General Ledger. Consequently, if you have different structures that have different first segments, ACCTID order will produce odd results, and you should order accounts by a particular segment or by account group.

If you choose to print by the account segment, the order for processing is first by that account segment, and second by the complete account number (as defined by its structure).

If you print by the account group code, the order is first by account group, second by account segment code, and third by account number.

The default sort order remains in effect until you specify another sort order, or unless it is overridden in a specific account reference (see the next section).

Specifying Account Order for One Account Reference

You can choose to process a single account reference in a different order than indicated by a default row specification or by the report options on the Financial Statements screen.

You specify a processing order for an account reference by placing it immediately after the account reference `Account reference | Order`.

Example:

- `1000-% |ACCT` uses account order, so processes only account 1000. Segment 2 will appear in any order.
- `1000-% |ACSEGVAL2` uses segment 2 order, so will scan all account numbers. However, segment 2 will be in order.
- `1000:3000 [REGION] |ACCTID` uses account number order for accounts that use the REGION account structure. Will only process particular accounts in the range.

Note: If the account reference specifies a range using a colon `:`, this reference will be processed in account number order unless you set an order for the reference using the `|` character (no matter what order is set in the Print dialog box or in the default row specification).

As you can see from these examples, the way you reference accounts can have a substantial impact on performance.

For information on specifying account references, see "About Account Number References" (page 59).

About Consolidating Account Ranges

You can perform two extremely useful operations on a group of accounts. You can:

- Consolidate all the lines of an account range instead of printing out the details.
- Print subtotals for groups of accounts according to changes in particular account segments.

Grouped, Separate, or Summarized Data

You can generate separate lines for each account in an account range, consolidating the account reference in a single line, consolidating account data

by account group, or you can consolidate the account data by account segment code.

You specify this choice in column D of a report specification. In addition, you can use the column D setting to override the account order processing on a line-by-line basis.

Column D Valid Values

Value	Description
D	For a detail. Prints one line for each account number.
RD	For a rollup account detail. Prints all the top-level rollup details, as well as accounts not in rollup groups.
T	For a total. Consolidates the data.
D(ACCT)	Consolidates by the account segment code, setting the account number sorting order to account segment order for this single account reference.
D (ACCTGROUP)	Consolidates by the account group.
D (ACSEGVAl n)	Consolidates by account segment number n .
D(AcctSegID)	Consolidates by the named account segment—for example, D (REGION).
PD	Consolidates by transaction details in posted transaction order.
PT	Consolidates by transaction consolidated total.
P(POSTTRAN)	Consolidates by transaction consolidated by account.
P(POSTDATE)	Consolidates by transaction consolidated by journal date.
P(POSTSEQ)	Consolidates by transaction consolidated by posting sequence.

In each case where consolidation is performed on the basis of a property of the account number, Financial Reporter processes the account number in the order required for consolidation. For example, if consolidation is by account group, the account numbers are processed in account group order.

Transactions can also be listed by consolidated account segments and account groups when listing by accounts. If you are consolidating by a specific account order in a list of transactions, the value in Column D must begin with a "P". For example:

- P(ACSEGVAl02) returns transaction records consolidated by account segment 2.
- D(ACSEGVAl02) returns account history records consolidated by account segment 2.

FR requires a correct sorting order in Column D in order to list details by transaction through field consolidation, as follows:

Sorting Order for Consolidating Transactions

Exclusive Sorting Order	Meaning
POSTTRAN	By posted transaction in account order
POSTDATE	By date order
POSTSEQ	By posting sequence order
POSTACCT	By account posting sequence

Important!

- The sorting order must be POSTTRAN if the consolidation value in column D is by P(POSTTRAN).
- The sorting order must be POSTDATE if the consolidation value in column D is by P(POSTDATE).
- The sorting order must be POSTSEQ if the consolidation value in column D is by P(POSTSEQ).
- Anything that appears in column D on a default specification line will be used by all subsequent lines unless you specifically override it.

Examples of "T" and "D" Consolidation Settings

The following examples show the effect of T and D settings in column D of a report specification.

Displaying Account Balances on Separate Lines

Specifying D in column D lists each of the accounts between 1100 and 1200 on separate lines.

A	B	C	D	E	F
\\				=FRACCT("ACCTDESC")	=FRAMT("BALP")
					<u>Current Balance</u>
1100:1200			D \		\

	Current Balance
Petty cash	274.57
Bank account	8,437.54
Bank account, CAD dollars	4,372.96
Total:	13,085.07

Displaying Account Totals on a Single Line

Specifying T in column D indicates that all accounts in the range are consolidated.

A	B	C	D	E	F
\\				=FRACCT("ACCTDESC")	=FRAMT("BALP")
					<u>Current Balance</u>
1100:1200			T Liquid assets		\

The resulting report totals the balances of all the accounts between 1100 and 1200, and reports the total on a single line.

	Current Balance
Liquid assets	13,085.07

Displaying Accounts in Segment Order, Consolidated by Segment

Specifying D(ACCT) in column D indicates that all accounts in the range are to be listed in account segment order and consolidated by the account segment.

A	B	C	D	E	F
\\				=FRSDESC(1)	=FRAMT("BALP")
					<u>Current Balance</u>
1100:1200			D(ACCT) \		\

	Current Balance
Petty cash	274.57
Bank account	12,810.50
Total:	13,085.07

Two lines are printed in the above example, because there are two account numbers with an account segment code between 1100 and 1200.

The first account segment code (1100) is for petty cash, and the second account segment code (1200) is for Bank Accounts. Two separate account numbers have an account segment code of 1200, but these two accounts (shown in the previous example) have been consolidated.

D (ACCT) summarizes by account segment code all other segments that happen to be within the ranges specified when printing the report.

For subsequent rows, the order will revert to the order that was in effect prior to this specification row.

About Account Number References

An account number reference specifies the accounts from which you want to retrieve General Ledger data.

Tip: In the Statement Designer, use FR Paste to specify accounts and account ranges without manually entering formulas. For more information, see "About FR Paste" (page 96).

Specifying Accounts and Ranges of Accounts

You can specify a single account number, or a range of account numbers in consolidated (single-row) or detailed (one row per account) format.

Example:

The formula =FRAMT ("BALP", "1200:1500") retrieves data from a range of accounts into a single spreadsheet cell.

When specifying account groups, you can use these formulas:

- \\acctgroup (sort by account group)
- \\acctgroupsort (account-sorted group)

The rules for specifying an account number reference are the same, whether the reference is in a function or in column A of a specification row.

Example:

Column A of a specification row specifies account data to use for the row:

A	B	C	D
%-1000~1100			

In this example, % is a wildcard character that takes the place of one or more characters. For more information, see "About Wildcard Characters in Account Numbers" (page 66).

In column D, you can enter D to specify that each account is listed separately, or T to specify that each account is totaled on a single line.

For more information, see "Account Reference Syntax and Examples" (page 101).

Account References and Performance

Financial Reporter can generate reports faster when it does not have to look up information for a substantial number of extra accounts. For this reason, check that the account processing order in the report matches the way you specify account references.

For more information, see "About Account Order in Financial Statements" (page 52).

Restricting Account Selection

Financial Reporter selects which account data is to appear in a financial report by evaluating three separate account number filters:

- The account number reference in column A of the report line.
- The account filtering expression in column B (if there is one).
- The print range options for the entire report.

Normally, an account has to satisfy the requirements of all three filters in order to be included in the report. However, Financial Reporter also provides a mechanism for specifying a report range, and for including accounts which lie outside that range.

The easiest way to add account numbers to a financial statement is using FR Paste. For more information, see "About FR Paste" (page 96).

Specifying Account Structures

To restrict account number selection to a particular account structure, use a formula such as `aaaa[ACCT]`, `bbbb~cccc-A[MANU]`, which specifies an individual account number and a range of account numbers. The square brackets indicate the account structure codes used by the account numbers.

Specifying a Segment to Override a Segment Range

You can override a segment range specified on the Print Financial Statements screen by including the segment values you want on the line in the column A account number reference.

Example: If you want to compare the performance of each department to the total sales for the organization, you can specify the total organization's sales on a line as follows: 4000~4999-A, 4000~4999-B, 4000~4999-C, 4000~4999-D. In this example, you would print reports specifying a segment range of A, of B, and so on.

Turning off Report-level Account Range Filtering

A \$ prefix turns off report-level account range filtering for the particular account number reference. If you use a \$ prefix, any account numbers that match the account reference you specify and match the selection criteria in column B will appear on the report, regardless of the restrictions imposed by Financial Reporter print settings.

You can also use the \$ prefix with the %% wildcard characters to include any account in the ledger allowed by the criteria in column B for the row. (%% is an account number reference that includes all accounts, no matter what their account structure.)

Specifying Ranges of Accounts when the Account Segment is not First in the Account Structure

Account references work best when the account segment is the first segment of your account numbers. Not only is it easier to specify account ranges, but Financial Reporter processes them more quickly as well.

If you do not have the account segment first, you can still specify a range of account segment codes and print the accounts in account segment order.

For example:

- 4000~8000 specifies all accounts with an account segment code from 4000 to 8000, no matter how many segments are in the number, and no matter where the account segment is in the account structure.
- A~C-400~600 |ACCT specifies all accounts with an account segment value between 400 and 600, and with a Department segment value from A to C. |ACCT indicates that the accounts are ordered by account segment.

- `%-400~600-%|ACCT` specifies account segment values from 400 to 600, no matter what the value of other segments. Again, the accounts are ordered by account segment.
- `%%|ACCT` specifies all account numbers ordered by the account segment. To specify a range or account segments, add a criterion in column B, such as `ACCTSEGVAL >= "4000" AND ACCTSEGVAL >= "6000"`.

The last example is the most flexible, because it specifies a range of account segment values no matter where the account segment lies in the account structure. This is especially useful if you have more than one account structure.

About Selection Criteria for Filtering Accounts

You use the selection criteria feature in Financial Reporter to include account figures in a report based on settings in the General Ledger account master.

For example, you could use the selection criteria expression `ACCTTYPE = "B" AND ACTIVESW = "ACTIVE"` to select all accounts with an account type of "B" (for balance sheet) and an active switch set to currently active.

When you place a selection criteria expression in a formula or on a statement line, Financial Reporter:

1. Looks up the account identified by the account number in column A of the line (or by a formula).
2. Checks to see that the account master information matches the selection criteria you have specified.

You can include selection criteria in column B of a specification (to restrict the accounts selected from the Account Code reference specified in column A), or in formulas that retrieve account balances, net amounts and quantities from posted transactions, or net amounts from General Ledger.

Tips:

- The easiest way to define selection criteria is to use FR Paste. For more information, see "About FR Paste" (page 96).
 - Generally, you should not use selection criteria if you can achieve the same result with a more selective account number reference.
 - You can improve report performance by being more precise in your account references to restrict the number of initial account lookups.
-

- You can choose report criteria variables you select from the Preview Financial Reporter screen while you are in a worksheet. Financial Reporter recalculates FR commands according to the criteria you have saved. (For example, if you have created two workbooks for different years, you can switch between the workbooks without losing the value of FR commands after running FR View.)

Using Selection Criteria in Column B

You can use selection criteria in column B of a specification to restrict the accounts selected from the Account Code reference specified in column A.

Defining a default expression for column B is similar to defining other default report columns: you place the default selection criteria expression in column B of a default specification line.

If you enter criteria on a default line, it is used for all subsequent lines that do not have a criteria defined. In other words, if you do not want the default expression to apply to a line, you must override it on the line.

Note: You do not need to type \ on lines for which you want to use the default selection criteria.

Using Selection Criteria in Formulas

You can also use selection criteria in formulas that use FRAMT, FRAMTA, FRCREDIT, FRDEBIT, FRTRN, FRTRNA, FRTRNCR, and FRTRNDR functions to retrieve account balances, net amounts and quantities from posted transactions, or net amounts from General Ledger.

If you paste an expression into a formula, the selection criteria acts on the formula only. If you paste the expression into column B of a statement line, the selection criteria further refines the account number reference specified for the current line.

About Excluding Lines from Reports

You can specify conditions to exclude generated lines from a report based on the contents of the line. You define the criteria for excluding a report line by adding a formula to column C of the line.

- **Suppressing lines with zero values.** To specify zero-line suppression, you type Z in column C. Financial Reporter suppresses all lines with a value of zero.

If you do not want to suppress zeros on an individual line, but you specified Z in the default specification, type N in column C of the line you want printed.

- **Using logical value formulas to include and exclude lines.** You can place a logical value formula (TRUE/FALSE) in column C. If the formula in column C returns TRUE, Financial Reporter does not print the line. If the formula returns FALSE, the line is printed.

For example, `=G12 < F12 * 10%` will check if the value in column F is less than 10% of the value in column G. If the statement is true, the line will be omitted from the report.

Note: Anything that appears in column C on a default specification line will be used by all subsequent lines unless you specifically override it.

About Expression Syntax for Selection Criteria

The easiest way to create a selection criteria expression is to use FR Paste. For more information, see "About FR Paste" (page 96).

You can also enter expressions directly into spreadsheet cells.

A simple criteria expression looks like this:

```
ACCTTYPE = "I"
```

A more complex one looks like this:

```
ACCTTYPE = "I" AND QTYSW = "Yes" OR ACCTDESC LIKE "%sale%"
```

ACCTTYPE and QTYSW (quantities switch) are fields in the account master file. All other fields in this file are listed in the next section.

Selection criteria use account master fields only. For more information, see "Account Master Fields" (page 171).

Left-to-Right Evaluation

Selection criteria expressions are evaluated strictly from left to right unless brackets are added. In other words, the above example will be evaluated as:

```
(ACCTTYPE = "I" AND QTYSW = "Yes") OR ACCTDESC LIKE "%sale%"
```

The expression will select all accounts that contain the word "sale" in their description, and it will select all income statement accounts that also store quantities.

Note: Criteria are case-sensitive, so a description with "Sale" will be excluded.

Brackets

You may use brackets to change the order of evaluation. For example:

```
ACCTTYPE = "I" AND (QTYSW = "Yes" OR ACCTDESC LIKE "%sale%")
```

will select income statement accounts that store quantities, or that contain the word "sale" in their description.

All the relational operators work with all the field types except for switches (like QTYSW), where only the = and != (not equal) operators apply.

Spaces

You use spaces to separate field names, operators and constants in expressions. For this reason, if you are comparing a string that includes spaces, you must enclose the entire string in quotation marks.

Quotation Marks

Remember that criteria are text parameters. If you place criteria in formulas, you must enclose criteria text in quotation marks.

If you paste criteria in column B, you will notice that FR Paste inserts them as formulas containing text. For example:

```
= "(ACCTTYPE = "I" AND QTYSW = "Yes" )"
```

FR Paste adds an extra pair of quotation marks around text values to accommodate spaces within the text strings.

If you paste a formula with criteria, it looks like this:

```
=FRACCT("ACCTDESC", "", "(ACCTTYPE = "I")")
```

If this is a default line column specification, the middle parameter in the formula will take on the account reference specified in column A.

LIKE

The **LIKE** operator is similar to the = operator, except the second operand can contain the wild cards % and _.

- % matches any group of characters.
- _ matches any single character.

So `ACCTDESC LIKE "%sale%"` is true for any accounts with descriptions that include the word "sale." This would include "Product B sales," as well as "Cost of sales."

Optional Fields

Selection criteria can also include optional fields. For example, the following expression restricts the results to accounts with account optional field `ACCTCLASS = Sales`:

```
A.ACCTCLASS = "Sales"
```

And, the following expression restricts the results to transactions with transaction optional field `QUANTITY <= 0`:

```
T.QUANTITY <= 0
```

For more information, see "About Optional Fields in Financial Reports" (page 38).

About Wildcard Characters in Account Numbers

You can use two wildcard characters when specifying account numbers:

- The underline character, `_`, is a placeholder for one character.
- The percent character, `%`, is a placeholder for one or more characters.

Example:

Using Wildcard Characters

Account number specification	Description
A123%[sc]	Specifies all single segment account numbers starting with the characters "A123."
D_6834	Specifies all single segment accounts sharing the same first character (D), followed by one character of any value, and ending with the same four characters (6834).

Note: You cannot use the Finder with FR Paste to insert wildcard characters. You must type in the wildcard characters yourself.

"%%" is Not a Wildcard Character

Although %% resembles a wildcard character, it is used in only two very specific ways:

- %% specifies all account numbers in the ledger. (See the QUIKINC and QUIKBAL statements that come with General Ledger.)
- 6000%% specifies all account numbers starting with 6000—no matter how many segments they have. (This specification has the same effect as 6000:6000.)

Example:

In this example, account number selection is based solely on the account group specified in column B.

A	B
%%	ACCTGRPCOD=1
%%	ACCTGRPCOD=2
%%	ACCTGRPCOD=3

Financial Reporter will list all Current assets, then all Fixed assets, and, finally, all Other assets.

Unless you process accounts by ACCTGROUP, Financial Reporter must scan every account in the ledger to see if it fits the criterion in column B.

Tip: To get the best performance from Financial Reporter, you should use specific account references, and specify account processing orders that complement the references. For more information, see "About Account Order in Financial Statements" (page 52).

Note also that you cannot combine account reference ranges with wildcard characters. For example, A123%:B567% is not allowed.

However, you can combine account references in a list, such as 1000:1099, 1100~1199-B, 1250-A.

About Formatting Financial Statements

All formatting of financial statements is controlled by the Financial Statement Designer's formatting commands. For more information about controlling tab size, tab headings, font size, and style, refer to the help and documentation for Microsoft Excel.

The most efficient method for formatting the area and the text within a cell is to create a style that includes various attributes (such as bold text, currency format, right alignment, and so on), and then apply the style to spreadsheet cells.

Adding Title Lines

The first five lines of the report specification are the title lines, which are repeated at the top of each tab of the report.

You can specify up to five lines that will appear at the top of each tab of a financial statement.

You can only define one set of title lines in a specification. All title lines must be together (contiguous).

If you have defined more than one set of title lines, Financial Reporter uses the last set in the specification.

Example:

The Universal Corporation Balance Sheet As of October 31, 1999	
	Current Balance
Petty cash	274.57
Bank account	8,437.54
Bank account, CAD dollars	4,372.96
Total:	13,085.07

If you want the title to appear only on the first tab of the report, leave the first column for these rows blank. The rows are transferred "as is" to the beginning of the Report range.

Note: If you use the Financial Reporter `\T` line, you cannot separately mark a group of cells as title lines. Title lines must be consecutive, and cannot be split by a tab break.

Adding Explanatory Comments (..)

We suggest you begin every specification with a few comment lines describing it, and add comments throughout to explain important sections of your specifications.

You can make any line of a report specification a comment line by starting column A with two periods. For example, the following four lines are in cells A1 through A4 of a report specification:

.. Specification name: INCS1					
..					
.. This specification file will produce a statement of earnings with one					
.. column of figures showing current year to date results.					

Grid Lines and Other Report Formatting

You specify all formatting for financial reports in the Financial Statement Designer's using Microsoft Excel formatting commands.

For example:

- To select the character font, bold type, left or right alignment, number appearance, cell borders and patterns, you use the commands in the **Font** and **Alignment** groups (on the **Home** tab of the Excel ribbon).
- To turn the spreadsheet grid on or off for printing, and turn on or off the row and column labels, you select options in the **Show** group (on the **View** tab of the Excel ribbon).
- To force a tab breaks in the printed report, use the Set tab Break command in the corresponding position of the report specification. Set the tab break in column A of the spreadsheet. (Note that the cell containing the tab break creates a vertical tab break as well as a horizontal one.)

All formatting applied to rows or columns in a report specification is applied to the rows and columns of the generated report.

To see the effect of all tab formatting in the Financial Report Designer, click **File > Print** to see a preview after you have used FR View to generate the report.

Hiding Columns and Rows

It is often useful to have statement columns and rows that you don't want printed on your final report. For example, you may have statement rows that

contain intermediate rounding calculations.

To hide a column, you can do either of the following:

- Right-click the column, select **Column Width**, and then set width to 0.
- Click and drag the edge of the column until its width is 0.

To hide a row, you can do either of the following:

- Right-click the row, select **Row Height**, and then set height to 0.
- Click and drag the top or bottom edge of the row until its height is 0.

About Page Layout

The **File > Page Setup** command controls the page layout and allows you to set headers, footers, and margins in a spreadsheet.

Printing Column Headings with Options/Set Print Titles

To print recurring column headings at the top of each page, use the Financial Statement Designer's Set Print Titles feature.

Setting Page Breaks

If you set a page break in the report template, Financial Reporter treats the page break as an "As is" row, and inserts it in the corresponding point in the final report.

The main use of page breaks is to begin new sections of a statement at the top of a page, or to ensure that all columns to the right of the page break appear on a separate page. Page breaks create a horizontal and a vertical division where you insert them in a spreadsheet.

	A	B	C	D	E	F	G	H	I	J	K	L	M
1													
2													
3													
4													
5			1								4		
6													
7													
8													
9													
10													
11													
12													
13													
14													
15													
16			2								5		
17													
18													
19													
20													
21													
22													
23													
24													
25													
26			3								6		
27													
28													
29													

The above diagram shows the effect of setting two page breaks: one in cell A11, which creates a horizontal break, and one in cell H23, which also creates a vertical break.

Page breaks are not very useful for statements containing account references that are expanded into many rows. They work best for starting sections of a report on a new page.

Generally, for multi-page reports, you can either leave the pagination to the Financial Statement Designer, or you can print the report to a file (or copy it to a word processor), then add whatever embellishments you want in the report file before printing a final report.

About the Spec Range

The Spec range is a named range of spreadsheet cells that begins with the first row and column of the report specification, and includes all cells that are part of the specification.

Before you can generate a report from a report specification, you must define the Spec range for your spreadsheet.

Note: The Spec range is already defined in all financial report specifications that come with Financial Reporter.

To check for a Spec range:

1. On Excel's ribbon, click **Formulas > Name Manager**.
2. If "Spec" is not listed in the Name Manager window, click **New**, and then define the Spec range.

Layout of the Spec Range

Columns with control information (A - D)				Columns that form the statement template (E - H)			
A	B	C	D	E	F	G	H
1	.. Specification name: Quikbal2						
2	..						
3	.. This specification file will produce a balance sheet with columns for						
4	.. the current year balance and the previous year balance as at the current fiscal period.						
5	..						
6							
7							
8							
9							
10							
11							
12							
13	\\ACCTGROUP		Z	D(ACCT)	-		
14							
15							
16							
17							
18	%%	ACCTGRPCOD = "01" OR ACCTGRPCOD = "02" OR\					
19							
20							
21							
22	%%	ACCTGRPCOD = "05"					
23	%%	ACCTGRPCOD = "06"		T			
24							
25							
26							
27	%%	ACCTGRPCOD = "07"					
28							
29							
30							
31							
32							
33							
34	%%	ACCTGRPCOD = "08" OR ACCTGRPCOD = "09" OR\					
35							

The first four columns of the Spec range (A through D) are reserved for control information for Financial Reporter.

The other columns form a template that determines the appearance of the report and the type of data that it retrieves.

Note: A specification can begin in any column of a worksheet, but the first column of the Spec range must be the first column of the specification. We always refer to the first column of the specification as column A. (There is no reason why you should start a specification anywhere else.)

Redefining the Spec Range

If you want to redefine the spec range in your worksheet after generating a report, use the **FR Clear** command to clear up the report area, and then make your changes to the spec range.

Setting the Spec Range

The Spec range is a named range of spreadsheet cells that begins with the first row and column of the report specification, and includes all cells that are part of the specification.

Before you can generate a report from a report specification, you must define the Spec range for your spreadsheet.

To define the Spec range in a Financial Reporter spreadsheet:

1. With the statement spreadsheet open in Excel, select the complete report specification, from the first row and column to the last row and column.
2. On the Excel Ribbon, click **Formulas > Define Name**.
3. Type **Spec** as the range name, then click **OK**.

Important! You must type exactly these letters, although the capitalization doesn't matter.

Note: You do not define a Report range for the spreadsheet. Financial Reporter defines the Report range when it generates the report from a specification.

About the Report Range and the Print Range

The Report range is generated from the Spec range when you print the financial report. It contains data that is generated by the report, as well as data extracted from the General Ledger.

The template portion of the specification expands in the final report to display the actual general ledger data.

The control information in the first four columns of the specification is replaced by audit information in the report range—the numbers of the accounts from which the information was taken.

When you print the report, Financial Reporter prints all but the first four columns of the Report range (omitting the audit information).

The area it prints is called the Print range.

Consolidating the Financial Statements of Multiple Companies in Microsoft Excel

These instructions assume that the statement you are consolidating consists of a single worksheet in Excel.

To consolidate financial statements:

1. In Sage 300 ERP, open the largest company.
2. Open **General Ledger > Financial Reporter > Statement Designer**, and then click **Start**.
3. Open the financial statement that you want to consolidate, and save it as a new workbook.

Tip: Save the workbook with a name that identifies it as a consolidated statement.

4. Review column C of the financial statement specification to make sure it does not suppress blank lines. (You use a **z** to suppress blank lines.)
5. Turn on manual calculation in Excel.
 - a. Click **File > Options**.
 - b. On the **Formulas** tab, in the **Calculation options** group, select **Manual**.
 - c. Click **OK**.

You can recalculate values at any time by pressing the **F9** key.

6. For each company that you want to consolidate, copy the worksheet for the company to the workbook in which you are consolidating statements.

- a. Click the worksheet tab to select it.
 - b. On the **Home** tab, in the **Cells** group, click **Format**, and then under **Organize Sheets**, click **Move or Copy Sheet**.
The Move or Copy window appears.
 - c. From the **To book** list, select the workbook in which you are consolidating statements.
 - d. From the **Before sheet** list, select **(move to end)**.
 - e. Select the **Create a copy** option.
 - f. Click **OK**.
7. Rename each worksheet for the company it represents, saving the workbook frequently. (To rename the worksheet, right-click the worksheet tab, and then click **Rename**.)
 8. When you have created one worksheet for each company, click the sheet for the company you opened in Sage 300 ERP, and then use FR View to generate the financial statement.
For more information about FR View, see "FR Menu Commands" (page 93).
 9. Right-click the tab for the first sheet in the workbook, click **Insert**, and then click **Worksheet** insert a blank worksheet, which you will use to create the consolidated statement.
 10. Right-click the new worksheet, click **Rename**, and then type a name for the worksheet.

Note: These instructions use **Consol.** as the name for this worksheet.

11. Generate and save statements for each additional company you want to consolidate.
 - a. In Sage 300 ERP, open the company.
 - b. Open **General Ledger > Financial Reporter > Statement Designer**, and then click **Start**.
 - c. Use FR View to generate the statement, using the same options you specified for the first company.
 - d. Save the workbook and close the Statement Designer.

12. Open the **Consol.** worksheet you created, and then open a new window for each worksheet, arranging them so they are all in view and their contents are aligned.
 - a. On the **View** tab, in the **Window** group, click **New Window**.
 - b. On the **View** tab, in the **Window** group, click **Arrange All**, and then select **Vertical**.
 - c. In each window, select a different tab, and scroll to align the contents of each window so that the first description in each generated report aligns with the top cell in the window.
13. In the worksheet that contains the most accounts, select and copy the print area.
14. In the **Consol.** worksheet, right-click cell A1, and then select **Paste Special > Values**.
15. Without deleting any blank lines, use Excel to format the statement as needed.

Note: You may have to insert lines for accounts that appear in one ledger, but not in others.

16. Clear all amounts from the report.
17. Sum the accounts for like accounts across all worksheets, so that totals for all companies appear in place of the amounts you erased in the previous step.

Chapter 4: Printing Financial Statements

Important! Printing using the Statement Designer is not the same as printing using the Print Financial Statements screen.

When you print using the Statement Designer:

- You can generate an audit information tab as well as account audit information in the first column of the report.

The audit information tab lists information such as the print ranges and any specified processing order.

- You can create formulas for each value that appears in the report range instead of the values themselves.

This means that you can update the report simply by recalculating the spreadsheet.

Note: Spreadsheet formulas make the spreadsheet a lot larger.

- If you generate a series of statements for a group of departments, the separate statements are generated in consecutive sheets in an Excel workbook.

When you print a set of statements using the G/L Print Financial Statements screen, Financial Reporter:

- Repeats the report generation process for each account segment.
- Prints a series of separate statements.

For instructions, see "Printing a Financial Statement" (page 79).

Tip: Keep financial ratios and graphs in a formula sheet. (The most common type of "formula-only" report is one that keeps financial ratios.)

There are two main advantages of a report that is composed only of formulas:

1. The report has the same cell references each time you use it.
2. The report area remains intact when you recalculate the report. (If you generate a report from a specification, the old report is cleared before the new one is generated.)

Because the spreadsheet remains the same each time you use it, you can include graphs in your reports and be sure of the data you are referencing.

Printing Reports With and Without a Spec Range

If a spreadsheet has formulas only (with no Spec range), you cannot use FR View to calculate and print the report. Instead:

- You press **F9** to calculate the values of the formulas.
- Financial Reporter recalculates the spreadsheet when you print the report.
- If you do not want to print the whole spreadsheet, you can use Excel's **Set Print Area** command to define the area you wish to print.

If the spreadsheet has a defined Spec range, Financial Reporter automatically regenerates the financial statement before printing it. All the columns included the Spec range are included on the printed statement, except columns A, B, C, and D.

Preparing to Print Reports

If report information extends beyond the right edge of the spreadsheet print area, it may be cut off.

You can modify a report specification to make sure that report information is not truncated by:

- Widening the spreadsheet column that contains the extra-wide result.
- Redefining the Spec range to include the columns over which the information extends.

This approach works because the right print area boundary of a financial statement that is generated from a specification is the same as the Spec range boundary.

Printing a Financial Statement

To print a financial statement in Financial Reporter, you can use either of the following methods:

- Use the G/L Print Financial Statements screen to specify print options and print the financial statement.
- Open a financial statement specification in the Statement Designer, use FR View to generate the statement, and then print.

The following procedure describes how to use the G/L Print Financial Statements screen. For information about using the Statement Designer to print financial statements, see "About Generating Reports from Specifications" (page 28) and "G/L Statement Designer" (page 30).

To print a financial statement:

1. Open **General Ledger > Financial Reporter > Print Financial Statements**.

2. Click **Browse**, and then select a financial statement file.

For a list of sample financial statements included with Sage 300 ERP, see "Sample Financial Statements" (page 87).

3. Under **Fiscal Option**, specify the year and period for which to create the statement.
4. Under **Report Type**, specify whether to include actual or provisional amounts in the report.

- **Actual.** Includes only amounts that have been permanently posted to general ledger accounts.
- **Provisional.** Includes amounts that have been provisionally posted to general ledger accounts, as well as permanently posted amounts.

5. Under **Report As**, specify whether to print a single, consolidated report, or to print separate reports for different account number segments.

Note: The **Separate** option is available only after you select **Segment** in the **Sort By** area of the screen, and then enter the range of segments. (This option is not available if you select the **Account** segment.)

6. Under **Include**, select the **Report Options** and/or **DrillDown Information** options as needed.

When you select **Report Options**, the first page of the financial statement displays the following information:

- Statement name
- Fiscal year and period
- Report type (actual or provisional)
- Account processing and sorting order
- Account selection ranges

On the G/L Print Financial Statements and Statement Designer screens, you can select the **DrillDown Information** option to add drilldown link comments to the generated report. The **Drilldown Information** option is available only when you select **File** or **E-Mail** under **Print Destination**. For more information, see "About FR Drilldown" (page 94).

For information about the **Audit Information** and **Formulas** options, see "G/L Statement Designer" (page 30).

7. Under **Sort By**, specify the order in which to sort records in the printed financial statement.
 - If you select **Account No.**, you can use the **From** and **To** fields to specify a range of account numbers to include, or leave the default values in these fields to include all account numbers.
 - If you select **Segment**, select a segment in the list that appears. You can use the **From** and **To** fields to specify a range of account numbers to include, or leave the default values in these fields to include all segments.
8. Specify account groups or sort code groups to include.
 - If you want to select account groups by sort code range, select the **Select Account Groups By Sort Code Range** option. You can use the **From Sort Code - Account Group** and **To Sort Code - Account Group** fields to specify a range of sort codes to include, or leave the default values in these fields to include all sort codes.
 - If you did not select the **Select Account Groups By Sort Code Range** option, you can use the **From Account Group** and **To Account Group** fields to specify a range of sort codes to include, or leave the default values in these fields to include all sort codes.

9. In the table, specify optional ranges of segments. If you selected **Separate** under **Report As** in step 5, you can double-click the Report As column to select **Separate** or **Consolidated**.
10. Select a print destination.
11. Click **Print**.

G/L Print Financial Statements Screen

To open this screen:

Open **General Ledger** > **Financial Reporter** > **Print Financial Statements**.

Secondary screens:

- "Print for Financial Statements Screen" (page 85)

Related tasks:

- "Printing a Financial Statement" (page 79)

Overview

Use the G/L Print Financial Statements screen to print standard or custom financial statements for your general ledger data.

You can select one of several statement specifications included with General Ledger to print a standard financial statement.

You can also select a statement specification that you have created and saved using the Financial Statement Designer.

The Print Financial Statements screen displays a variety of options that you can use to print a report.

Important! Printing using the Statement Designer is not the same as printing using the Print Financial Statements screen.

For more information, see "Printing Financial Statements" (page 77).

Fields and Controls

Buttons

Close

Click **Close** to close the screen.

Print

Click this button to open the Print Financial Statements screen, where you:

- Specify the printer on which to print the statement.
- Select the size of paper that best accommodates the statement.
- Specify the orientation of the statement (portrait or landscape).
- Specify the number of copies to print.

Fiscal Option (Year/Period)

Specify the year and the fiscal period for the report.

You can print financial reports as of any past period for which you have data in General Ledger.

Include

You can choose to include the following information when you print statements using the G/L Print Financial Statements screen:

- **Report Options**

When you select **Report Options**, the first page of the financial statement displays the following information:

- Statement name
- Fiscal year and period
- Report type (actual or provisional)
- Account processing and sorting order
- Account selection ranges

- **Drilldown Information**

Note: The Drilldown Information option is available only after you select **File** or **E-Mail** in the Print Destination area of the screen.

The recipient of an e-mailed statement must be using the same database, with General Ledger installed, to drill down to underlying transactions in the report.

Print Destination

For Financial Reporter statements, you use the Print Destination settings on the Print Financial Statements screen. (These statements do not use the destination selected for other Sage 300 ERP reports from the **File > Print Destination** menu on the desktop.)

At print time, you select one of the following destinations:

- **Printer.** Print to a physical printer.
- **Preview.** Display the report on your computer screen.
- **File.** Save the report as a file.
- **E-mail.** Send the report as an attachment in an e-mail message.

If you select **File** as the print destination:

- You specify whether to save the file in Excel format or in text format. Financial Reporter then saves all the values in the report's Print range in that file format.
- When you print, Financial Reporter assigns new file names based on the original Financial Report spreadsheet name, followed by a sequence number. For example, if the spreadsheet was named BALANCE.XLS, the print file spreadsheet would be named BALANCE.001 or BALANCE.001.xls, depending on the format you chose.

If statement printing generates a series of reports (for example, a departmentalized report), the separate reports will be numbered BALANCE.001, BALANCE.002, BALANCE.003, and so on.

Report As

You can print a single, consolidated report, or you can print separate reports for different account number segments. For example, if one of your account number segments is a department code, you can print a separate report for each department.

Note: Before you can select **Separate**, you must select **Segment** and specify a segment that is not the Account segment.

To print separate reports, you must print by any segment except the account segment. In other words, if you have three segments in your account numbers, Region, Department, and Account, you must sort by the Region segment or the Department segment.

Tip: To print separate reports by Region and Department, you choose the Region or Department segment for the Sort by selection, then, in the segment table, choose Separate for the other segment.

When using the Print Financial Statements screen to print financial statements, the report is generated for each account segment code, printing each separate report in turn.

Report Type

Financial Reporter allows you to print one of two groups of data:

- **Actual.** Includes only amounts that have been permanently posted to general ledger accounts.
- **Provisional.** Includes amounts that have been provisionally posted to general ledger accounts, as well as permanently posted amounts.

This option affects only formulas that are not explicitly set as Actual or Provisional in the statement specification.

The report specification can also have the following effects at print time:

- Prefixes used for NET and BAL determine the fiscal set. NET and BAL can have a prefix A, P, Q, QA, QP, 1, 2, 3, 4 or 5, to indicate Actual, Provisional, Quantity, Actual Quantities, Provisional Quantities, or any of the five budget sets. For example:
 - **ABALP** provides the actual balance at the current fiscal period.
 - **1BALP** provides the balance from budget set 1 for the current fiscal period.
 - **BALP** provides either the actual balance or the provisional balance, depending on the report type you select at print time.
- If you do not specify a prefix or if you select **Q**, the default is either actual or provisional, depending on the report type.

Sort by

You can order accounts on financial statements by account number, by a particular segment of the account number, by the account group, or by account group sort code.

You may then specify a range for the item by which you are ordering the report.

The sort order you select does not override account sorting orders that are specified in the report. If the sorting order is crucial to the contents of the report, you should build it into the report specification.

Note: To print separate reports, you must print by any segment except the account segment. In other words, if you have three segments in your account numbers, Region, Department, and Account, you must sort by the Region segment or the Department segment before you can select **Separate** for the **Report as** option.

Sorting order affects the order in which accounts within a range will appear on a financial report, and it affects the report processing efficiency.

For more information, see "About Account Order in Financial Statements" (page 52).

Select Accounts Fields and Table

Use the **From** and **To** fields to restrict the accounts included on a financial statement to:

- A range of account groups (unless the report is ordered by account group).
- Ranges of account segment codes (such as a range of departments and/or range of regions).

You can also print separate reports by account number segments. For example, to print separate reports for each department in each region of your company, you select **Sort by Region**, and then when selecting accounts in the table, select **Report as Separate** (by double-clicking **Consolidated**).

Print for Financial Statements Screen

To open this screen:

1. Open **General Ledger > Financial Reporter > Print Financial Statements**.
2. Specify the statement name.
3. Select printing options.
4. Click **Print**.

Related tasks:

"Printing a Financial Statement" (page 79)

Overview

Use the G/L Print for Financial Statements screen when printing statements in Financial Reporter to:

- Specify the printer on which to print the statement.
- Select the size of paper that best accommodates the statement.
- Specify the orientation of the statement (portrait or landscape).
- Specify the number of copies to print.

Appendix A: Sample Financial Statements

Financial statements are Microsoft Excel spreadsheets that use special functions to extract data from the Sage 300 ERP company database.

General Ledger includes the following standard financial statements. English-language statements are located in the ENG subfolder of the General Ledger program folder. If are using another supported language version of Sage 300 ERP, you'll find your statements in a language-specific folder. For example, French statements are located in the FRA subfolder and work with French-language Excel.

Important!

The sample statements are designed for Sage 300 ERP sample data, and retrieve data using standard account groups.

To use the statements with your own data, you must either:

- Assign the same standard account groups to your accounts.
- Customize the sample statements to match the account groups that you have set up for your company.

To modify a sample statement, first copy the file and then save it with a new file name.

Balance Sheets

General Ledger includes standard balance sheet statements and summaries.

The sample summaries include:

- A regular size balance sheet that summarizes the company's assets, liabilities, and equity at a specific point in time.
- A common size balance sheet, which includes a regular size balance sheet, and separate reports listing asset line items as a percentage of total assets, and liability line items as a percentage of total liabilities.
- Common size balance sheets that also include graphical summaries, statements for specified periods, comparisons of current and previous year amounts, and comparisons of current year and budget amounts.

Note: All sample balance sheets include the profit or loss for the period.

Balance Sheet Statements

General ledger includes the following sample statements:

- **QuikBal1.xls.** Standard Balance Sheet (single column)
- **QuikBal2.xls.** Comparative Balance Sheet (Current Year / Previous Year)
- **QuikBal3.xls.** Comparative Balance Sheet (Current Period / Previous Period)

Balance Sheet Summaries

General ledger includes the following sample statements:

- **Balsum01.xls.** Common Size Balance Sheet Summary
A summary as amounts and as a percentage of total assets and liabilities, printed on separate pages.
- **Balsum02.xls.** Balance Sheet Summary with Graphs
A summary as amounts and a graph as a percentage of total assets and liabilities. Asset summaries and liability summaries are printed on separate pages.

Important! Financial Reporter does not generate this report. Rather, the report uses data from fixed cells in the Excel spreadsheet, and may not print the correct information if the report is generated with the **[Include] Report Options** setting. If you are printing the report from the **G/L Print Financial Statements** screen in Sage 300 ERP, make sure that **[Include] Report Options** is not selected.

Note: For Excel-based charts, the default position of data labels varies by Excel version. To add or remove data labels or modify their position, refer to the help or documentation provided with your installed version of Excel.

- **Balsum03.xls.** Balance Sheet Summary for Specified Period
A summary of the balance sheet for a specified period.
- **Balsum04.xls.** Comparative Balance Sheet Summary

(Current Year / Previous Year)

A comparison of current and previous year amounts, and variance by amount and percentage.

- **Balsum05.xls.** Comparative Balance Sheet Summary (Current Year / Budget)

A comparison of actual and budgeted amounts for the current year, and variance by amount and percentage.

Income Statements

General Ledger includes standard income statements and income statement summaries.

The sample summaries include:

- A regular size income statement that summarizes the company's profit or loss for a specified period.
- A common size income statement, which includes a regular size income statement, and separate reports listing line items as a percentage of sales revenue.
- Common size income statements that also include graphical summaries, statements for specified periods, comparisons of current and previous year amounts, and comparisons of current year and budget amounts.

Tip: You can use Excel formulas and functions to display amounts as percents or ratios.

Standard Income Statements

General ledger includes the following sample statements:

- **QuikInc1.xls.** Standard Income Statement (single column)
- **QuikInc2.xls.** Comparative Income Statement (Current Year to Date / Last Year to Date)
- **QuikInc3.xls.** Comparative Income Statement (Current Year to Budget)
- **QuikInc4.xls.** Comparative Income Statement (Current Year with Drilldown)

Use this statement to drill down to an originating transaction. For more information, see "About FR Drilldown" (page 94).

Income Statement Summaries

Income statement summaries display each account as a percentage of sales revenue, allowing financial managers to see how the company's profit is affected by income statement components.

General ledger includes the following sample statements:

- **Incsun01.xls.** Common Size Income Statement

A summary as amounts and as a percentage of sales revenue, printed on separate pages.

- **Incsun02.xls.** Income Statement Summary with Graphs

A summary as amounts and a graph as percentages of total revenue.

Important! Financial Reporter does not generate this report. Rather, the report uses data from fixed cells in the Excel spreadsheet, and may not print the correct information if the report is generated with the **[Include] Report Options** setting. If you are printing the report from the **G/L Print Financial Statements** screen in Sage 300 ERP, make sure that **[Include] Report Options** is not selected.

Note: For Excel-based charts, the default position of data labels varies by Excel version. To add or remove data labels or modify their position, refer to the help or documentation provided with your installed version of Excel.

- **Incsun03.xls.** Income Statement Summary for Specified Period

A summary of the income statement for a specified period.

- **Incsun04.xls.** Comparative Income Statement Summary (Current Year / Previous Year)

A comparison of current and previous year amounts, and variance by amount and percentage.

- **Incsun05.xls.** Comparative Income Statement Summary (Current Year / Budget)

A comparison of actual and budgeted amounts for the current year, and variance by amount and percentage.

Financial Analysis Statements

Analysis statements display financial ratios used by financial managers to evaluate a company's performance.

Financial Ratios

For some of the following sample statements, you must enter financial ratios for a *benchmark company*—an average company in your industry—on the Benchmarks worksheet.

General ledger includes the following sample statements:

- **Finratio01.xls.** Financial Ratios

A summary of the financial ratios for the current period grouped into the following categories: Profitability, Asset Utilization, Liquidity, Debt Utilization, and Growth.

- **Finratio02.xls.** Financial Ratios and Benchmarks

A comparison of the company's financial ratios to the benchmark, and the variance between the ratios.

- **Finratio03.xls.** Financial Ratios and Benchmarks with Graphs

A graph comparing the company's financial ratios to the benchmark.

Important! Financial Reporter does not generate this report. Rather, the report uses data from fixed cells in the Excel spreadsheet, and may not print the correct information if the report is generated with the **[Include] Report Options** setting. If you are printing the report from the **G/L Print Financial Statements** screen in Sage 300 ERP, make sure that **[Include] Report Options** is not selected.

Note: For Excel-based charts, the default position of data labels varies by Excel version. To add or remove data labels or modify their position, refer to the help or documentation provided with your installed version of Excel.

- **Finratio04.xls.** Comparative Financial Ratios (Current Year / Previous Year)

A comparison of the company's financial ratios for the current and previous years, and the variance between the ratios.

- **Finratio05.xls.** Comparative Financial Ratios and Benchmarks with Graphs (Current Year / Previous Year)

A graph comparing the company's financial ratios for the current and previous years to the benchmark.

Important! Financial Reporter does not generate this report. Rather, the report uses data from fixed cells in the Excel spreadsheet, and may not print the correct information if the report is generated with the **[Include] Report Options** setting. If you are printing the report from the **G/L Print Financial Statements** screen in Sage 300 ERP, make sure that **[Include] Report Options** is not selected.

Note: For Excel-based charts, the default position of data labels varies by Excel version. To add or remove data labels or modify their position, refer to the help or documentation provided with your installed version of Excel.

Financial Forecasts

Use financial forecasting to assess your current operating performance, and project how your business will perform in the future.

Forecast.xls creates a forecasted income statement and balance sheet. The statements include actuals for the current and previous years, and projected amounts for the next three years based on the percentage of sales revenue growth.

Note: The forecasting method assumes that certain expenses, assets, and liabilities maintain a constant relationship to the level of sales. To perform what-if analysis, enter projected percentages for revenue growth and other line items in the **Adjustments** area of the statement specification.

Appendix B: FR Menu Commands

When you use the Statement Designer to open a Microsoft Excel worksheet, an **Add-Ins** tab appears on the Excel ribbon. On this tab, the **FR** menu displays commands you can use to create and edit financial reports and specifications.

FR Menu Commands

FR Menu Commands

Command	Description	Notes
FR Clear	Clears the report range from a previously generated financial statement.	<ul style="list-style-type: none"> You usually use FR Clear before saving a final version of a specification after developing and testing it. You do not need to use FR Clear before using FR View to generate a report. However, by clearing the report range first, you save a smaller spreadsheet and one that will take less time to load whenever you print the financial report.
FR Drilldown	Drill down to transactions after generating a financial statement that contains formulas for transactions.	For more information, see "About FR Drilldown" (page 94).
FR Help	View help for the Financial Statement Designer.	
FR Options	Specify whether the opening budget or opening quantity for an account on a financial statement should be carried forward from the previous year.	<ul style="list-style-type: none"> Use Budget Opening Balance. Select this option to display the budget amount carried forward from the previous year. <div style="border: 1px dashed gray; padding: 5px; margin: 5px 0;"> <p>Note: If there is budget information for the current year, this option is ignored and the information for the current year is displayed.</p> </div> Use Quantity Opening Balance. Select this option to display quantities carried forward for accounts that use the Maintain Quantities option.

Command	Description	Notes
		<p>Note: If there is quantity information for the current year, this option is ignored and the information for the current year is displayed.</p> <p>Tip: If you change a selection, run FR View to update your report.</p>
FR Paste	Inserts Financial Reporter functions, account numbers, and selection criteria.	For more information, see "About FR Paste" (page 96) and "Using FR Paste to Insert Information in Financial Reports" (page 98).
FR View	Opens the G/L Financial Statement Designer screen, which you use to generate financial statements from report specifications.	For more information, see "G/L Statement Designer" (page 30).

About FR Drilldown

On the G/L Print Financial Statements and Statement Designer screens, you can select the **DrillDown Information** option to add drilldown link comments to the generated report.

Drilldown instructions are stored in the comment object of a cell. After generating a report, you can right-click a results cell, and then click **FR DrillDown** to view transaction details.

Note: The recipient of an e-mailed report must be using the same database, with General Ledger activated, if they want to drill down to underlying transactions in the report.

Warning! A spreadsheet containing a large number of drilldown links may be slow to open, or fail to open, in the Statement Designer and in Microsoft Excel.

When you use the Statement Designer to open a Microsoft Excel worksheet, an **Add-Ins** tab appears on the Excel ribbon. On this tab, the **FR** menu displays commands you can use to create and edit financial reports and specifications. The **FR Drilldown** command appears on this menu. You use it to view original

transactions after a report has been generated in the Financial Statement Designer.

Note: You must use the **FR View** command to generate a report before you can use **FR DrillDown**.

FR DrillDown Example

The sample spreadsheet **quickinc4.xls** uses the transaction function FRTRNA to demonstrate drilldown. In the sample spreadsheet, the formula `FRTRNA("NETYTD")` produces a statement of earnings with one column of figures showing current year-to-date results. The comment displayed explains how to drill down to the transaction.

To see how FR Drilldown works, perform the following steps in the sample spreadsheet **quickinc4.xls**:

1. On the Excel ribbon, on the **Add-Ins** tab, click **FR > FR View**.
2. Click **OK** to run FR View.

The report is generated. Results cells where FR DrillDown is available appear with a red mark in the top right corner of the cell.

3. Right-click a report cell, and then then click **FR DrillDown**.

The original transaction details appear in a new window.

Formulas that Support FR Drilldown

FR DrillDown works only with formulas that contain the following transaction functions:

- FRTRN
- FRTRNA
- FRTRNCR
- FRTRNDR

FR DrillDown is not available for formulas that contain edited versions of the following transaction functions:

- FRTRN
- FRTRNA

- FRTRNCR
- FRTRNDR

The following are examples of edited commands:

- =FRTRN ("NETP") +100
- =ROUND (FRTRN ("NETP") , 0)

For information about other menu commands in the Financial Statement Designer, see "FR Menu Commands" (page 93).

About FR Paste

When you use the Statement Designer to open a Microsoft Excel worksheet, an **Add-Ins** tab appears on the Excel ribbon. On this tab, the **FR** menu displays commands you can use to create and edit financial reports and specifications.

The **FR Paste** command appears on this menu. You use it to paste formulas into spreadsheet cells to retrieve and display the following General Ledger data:

- **Account numbers.** For more information, see "About Account Number References" (page 59).
- **Account selection criteria (query-by-example expressions).** For more information, see "About Selection Criteria for Filtering Accounts" (page 62).
- **Financial Reporter functions.** For more information, see "Financial Reporter Functions" (page 105).
- **Rolled up amounts.**

Note:

- On the FR Paste Function screen, use the **Rolled Up Amounts** option to specify whether or not to paste rolled up balances or quantities into reports for rollup accounts. This option is available for FRAMT, FRAMTA, FRCREDIT, and FRDEBIT only.
- Take care when creating the rollup group to avoid ending up with doubled amounts in the final report.

- Select the **Rollup Members Account** option to include balances or quantities for rollup member accounts whose balances or quantities are also being rolled up to their rollup account in the same paste function in the report.

For information about other menu commands in the Financial Statement Designer, see "FR Menu Commands" (page 93).

Pasting Single Values and Default Column Specifications

The following are typical single values you will paste in a financial report:

- Company name
- Period-end date (or today's date)
- Division or department for which the report is printed
- A single account balance

For each of the above items, you will paste a complete formula, and you will probably not have to edit the result.

Pasting Column Formulas

If you are pasting a formula to use as a default column specification, do not enter an account reference (because you will be supplying that in column A of each line that uses the default column specification).

For example, the formula for a single cell might be `=FRAMT("BALP", "1000")`, whereas a default column formula would be `=FRAMT("BALP")`.

For instructions on using FR Paste, see "Using FR Paste to Insert Information in Financial Reports" (page 98).

About the Fiscal Designator

When you use the Statement Designer to open a Microsoft Excel worksheet, an **Add-Ins** tab appears on the Excel ribbon. On this tab, the **FR** menu displays commands you can use to create and edit financial reports and specifications.

The **FR Paste** command appears on this menu. On the FR Paste Function screen, the Fiscal Designator is a drop-down list that appears for the FRAMT, FRAMTA, FRDEBIT, FRCREDIT, FRTRN, FRTRNA, FRTRNCR, and FRTRNDR functions. The list shows the fiscal set options you can select:

- Budget sets 1, 2, 3, 4, and 5
- **A.** Actual monetary figures
- **P.** Provisionally-posted monetary figures
- **Q.** Quantities (either actual or provisional)
- **QA.** Actual quantities
- **QP.** Provisionally-posted quantities

Note:

The FRTRN, FRTRNA, FRTRNCR, and FRTRNDR functions include only the following options:

- **A.** Actual monetary figures
- **Q.** Quantities (either actual or provisional)
- **QA.** Actual quantities

Whether actual or provisional figures or quantities appear depends on the default you select on the Preview Financial Statements screen at the time you print a report.

Using FR Paste to Insert Information in Financial Reports

When you use the Statement Designer to open a Microsoft Excel worksheet, an **Add-Ins** tab appears on the Excel ribbon. On this tab, the **FR** menu displays commands you can use to create and edit financial reports and specifications.

The **FR Paste** command appears on this menu. You use it to paste formulas into spreadsheet cells to retrieve and display General Ledger data. For more information, see "About FR Paste" (page 96).

To insert information using FR Paste:

1. In the Statement Designer, select the cell where you want to insert General Ledger data.

2. On the Excel ribbon, on the **Add-Ins** tab, click **FR > FR Paste**.

The FR Paste Function window appears. Below the **Functions** list and available selections, a cell reference (such as `Cell A1:`) and formula (such as `FRACCT ("")`) appear. As you select options, this area is updated to display the current formula.

In the bottom left corner of the screen, the function builds as you select options.

3. From the **Functions** list, select a function, account reference, or selection criteria expression.

When you select a function, available options and parameters for the function appear to the right of the list. Depending on your selection, these may include account numbers, account ranges, selection criteria, currency type, and other options.

4. Specify options for the function, account reference, or expression. For more information, see "Financial Reporter Functions" (page 105).

If you are specifying account numbers, you can specify individual account numbers or a range of account numbers.

5. If you want to filter an account or account range by specific criteria, click the **Selection Criteria** button, and then specify criteria to use.

6. When you have created the formula, paste it into your report or specification.

- a. To paste the formula into the selected cell (listed in the bottom left of the screen), click **Paste**.

- b. To select a different cell, click **Next Row**, **Prev Row**, **Next Column**, or **Prev Column** to navigate to the desired cell, and then click **Paste**.

The formula you created is pasted into the financial report or specification.

Appendix C: Account Reference Syntax and Examples

Account number references can use the following symbols:

Account Reference Symbols

Symbol	Description
Hyphen -	An account segment separator defined on the G/L Options screen in General Ledger. (The hyphen is the default separator.)
Colon :	Separates account numbers in a range.
Tilde ~	Separates segment codes in a segment range.

Note: All examples assume that segment 1 is the account segment and segment 2 is the department segment.

Standard Account References

Standard Account References

Format	Description	Examples
aaaaaaaa or aaaa-aaaa	A specific General Ledger account number composed of one or two segments. Account numbers can be entered with or without the segment separator -. However, if you are specifying ranges of accounts, we suggest you include separators to remove ambiguity from your specifications.	100-C Account 100, department C.
aaaa- A:bbbb-B	A range of General Ledger accounts and departments. When creating a search statement from the information you enter,	<ul style="list-style-type: none"> 100:200 Accounts between 100 and 200 (from any department) 100-A:200-F

Format	Description	Examples
	<p>Financial Reporter adds Zs to the last number in the range. In other words, it searches for account numbers between "aaaa-A" and "bbb-BZZZZZZZZZZZZZZZZ".</p>	<p>Accounts with an account segment value between 100 and 200, and with a Department segment value between A and F (for any order other than ACCTID order).</p> <p>If the order is ACCTID, account 150-H will be included because it falls between 100-A and 200-F. However, for non-ACCTID order, Financial Reporter takes only those accounts that fall within both ranges (the range of accounts and the range of departments), so that 100-A:200-F is the same as 100~200-A~F (shown below).</p> <p>If the order is ACCTID, the constraint is ACCTID => 100-A and ACCTID <= 200-F.</p>
<p>aaaa%% or aaaa:aaaa</p>	<p>A range of General Ledger account numbers. (The wildcard notation %% is a simpler way of specifying all accounts with the same segment.)</p>	<p>100%% or 100:100</p> <p>All accounts that start with 100, regardless of account structure.</p>
<p>aaaa~bbb- A</p>	<p>A range of General Ledger account numbers with a fixed second segment.</p> <p>Financial Reporter retrieves information from each account within the range that includes the second segment code.</p>	<ul style="list-style-type: none"> • 100~200-F <p>Accounts in department F with an account segment value between 100 and 200, and with a department segment code of F.</p> <ul style="list-style-type: none"> • 100~200-A~F <p>Accounts with an account segment code between 100 and 200, and with a department segment code from A to F.</p>
<p>aaaa~bbb</p>	<p>A range of General Ledger account segment codes.</p> <p>Financial Reporter retrieves all accounts matching the account segment you</p>	<p>4000~8000</p> <p>Accounts with an account segment code from 4000 to 8000, no matter how many segments are in the number, and no matter where the account segment</p>

Format	Description	Examples
	<p>specify, no matter how many segments are in the number, and no matter where the account segment is in the account structure.</p> <p>This allows you to specify a range for one segment (rather than a range of complete account numbers), and is particularly useful when the account segment is not the first segment in the account number.</p>	<p>is in the account structure. For example, results will include 10-4000, 20-5000, and 10-6000 if those accounts exist in General Ledger.</p>
<pre>aaaa [ACCT], bbbb~cccc- A[MANU]</pre>	<p>An individual account number and a range of account numbers. The square brackets indicate the account structure codes used by the account numbers.</p>	
<pre>aaaa-%, bbbb~cccc- A~B, gggg- D</pre>	<p>A set of ranges and individual accounts with each specification separated by a comma.</p>	

Appendix D: FR Function Reference

Use Financial Reporter functions to retrieve data from General Ledger, including transaction and optional field information.

Financial Reporter Function Notation

Financial Reporter functions use the following typographic conventions:

Convention	Description
UPPERCASE	Function names are in uppercase letters.
()	Function arguments are listed in parentheses.
,	All arguments are separated by a comma. Most argument parameters are text, so are either: <ul style="list-style-type: none">• In quotation marks• A reference to a spreadsheet cell that contains a text value, or a formula that returns a text value Note: Excel will return a "#VALUE!" error if you specify an argument that does not exist.

Example:

```
FRACT(field name, account number)
```

```
FRACCT(field name, account number, criteria, format)
```

Financial Reporter Functions

Accounts in General Ledger (G/L) contain two main types of data:

- **Master information:** Account name, account type, and other information regarding the account.
- **Fiscal set values:** Balances and net amounts for each general ledger account.

You can use the following functions in Financial Reporter to retrieve data from General Ledger, including transaction and optional field information.

Function	Data Retrieved
"FR" (page 107)	G/L Option data, company data, and statement print options
"FRACCT" (page 110)	Account data, including account optional fields
"FRAMT" (page 114), "FRAMTA" (page 121), "FRCREDIT" (page 128), "FRDEBIT" (page 135)	Fiscal set data
"FRFISCAL" (page 142)	Fiscal calendar dates
"FRPOST" (page 144)	Accounts and transaction detail data, and account and transaction optional field data from posted transactions
"FRRATE" (page 147)	Exchange rates
"FRSDESC" (page 149)	Segment code descriptions
"FRTRN" (page 150), "FRTRNA" (page 156), "FRTRNCR" (page 161), "FRTRNDR" (page 166)	Transaction detail data including net totals, and account and transaction optional fields (but not provisional amounts)

Tip: In Excel, use **FR Paste** (available from the Financial Statement Designer's FR menu) to insert a Financial Reporter function into a financial statement. From the FR Paste screen, you can select the function, its arguments, and additional report options. For more information, see "About FR Paste" (page 96).

FR

This function can retrieve G/L Option, company, and fiscal calendar data; runtime parameter values; and statement print options.

Syntax

```
FR(option, formatted)
```

Arguments

Argument	Description
option	The name of a field from the Company Profile, Fiscal Calendar, or G/L Options screens; or a specified runtime parameter or print option.
formatted (Optional)	Indicates whether the return value should be formatted according to the presentation defined in the view. If omitted, the default is "Formatted." Use one of the following constructs: <ul style="list-style-type: none"> "FORMATTED", "F", or "FMT" "UNFORMATTED", "U", or "UNFMT"

Option can be one of the following:

G/L Options fields

Field name	Description
Orgid	6-character database ID for the company (for example, SAMINC)
Coname	Company name
Address1	First address line
Address2	Second address line
Address3	Third address line
Address4	Fourth address line
City	City
Province	Province
State	State

Field name	Description
Zip	Zip code
Postal	Postal code
Country	Country
Phone	Telephone number
Fax	Fax number
Contact	Ledger contact name
FuncCurr	Ledger functional currency
RPCurr	Reporting currency code, <i>when the Euro is the functional currency</i>
RPACCT	Rounding account defined in G/L Options for the reporting currency, <i>when the Euro is the functional currency</i>

Runtime parameters and print options

Name	Contents of the field
SessionDate	Date entered at signon
Year	Fiscal year
Period	Fiscal period number
Start	Period start date
End	Period end date
QStart	Quarter start date
QEnd	Quarter end date
ReportType	<ul style="list-style-type: none"> • If unformatted, returns "1" for actual, "2" for provisional report • If formatted, returns "Actual" or "Provisional"
ReportAs	<ul style="list-style-type: none"> • If unformatted, returns "1" for consolidated, "2" for separate • If formatted, returns "Consolidated" or "Separate"
SortBy	<ul style="list-style-type: none"> • If unformatted, returns "1" for Account ID, "2" for Segment ID, "3" for Account Sorted Group • If formatted, returns "AccountID," "SegmentID," or "Account"

Name	Contents of the field
	Sorted Group"
SortByAcSeg	<ul style="list-style-type: none"> • If unformatted, returns the number of the segment by which you are sorting • If formatted, returns the name of the segment by which you are sorting
From AcctID	Starting Account ID in the print range
To AcctID	Ending Account ID in the print range
From AcctGroup	Starting Account Group in the print range
To AcctGroup	Ending Account Group in the print range
AcSegName <i>n</i>	Name of the <i>n</i> th account segment (for example, Division or Department)
AcSegReportAs <i>n</i>	If ReportAs = 2 (separate), this is the consolidation setting of the <i>n</i> th segment
FromAcSeg <i>n</i>	Starting value of the <i>n</i> th segment in the print range
ToAcSeg <i>n</i>	Ending value of the <i>n</i> th segment in the print range
CurAcSegVal <i>n</i>	The current value of the segment for the current report. This value is only appropriate when "ReportAs" = 2 (separate).
Acctgroupsort	Sorting by Account Sorted Group
Acctgroup	Sorting by Account Group

Examples

Statement	Return Value
=FR("Coname")	The Garden Inc.
=FR("End")	4/30/02

FRACCT

This function retrieves data from G/L account records, including account optional fields. It cannot retrieve data from transaction optional fields.

Syntax

```
FRACCT(field name, account reference, criteria, formatted)
```

Note: The function returns a blank if the account reference is missing, the account does not exist, or if no accounts exist in the specified range.

Arguments

Argument	Description
field name	The name of a field from the G/L account record, including account optional fields. Tip: Account optional fields have an "A." prefix.
account reference	A string specifying a single account or a range of accounts. See "About Account Number References" (page 59). Note: <ul style="list-style-type: none"> For a range of accounts, the function returns <i>only</i> the data that is common to all accounts. If the account does not exist, FRACCT returns a hyphen (-).
criteria	An expression that imposes selection criteria on the accounts. The account reference and expression together determine the accounts that will be included in the calculation. See "About Selection Criteria for Filtering Accounts" (page 62).
formatted (Optional)	Indicates whether the return value should be formatted according to the presentation defined in the view. If omitted, the default is "Formatted." Use one of the following constructs: <ul style="list-style-type: none"> "FORMATTED", "F", or "FMT" "UNFORMATTED", "U", or "UNFMT"

Field names for G/L account data

You can use the following G/L account field names. To retrieve optional fields, add the prefix "A." before the field name (include the period).

Field Name	Description
ACCTID	Account number, including all segments
CREATEDATE	Date the account was created
ACCTDESC	Account description
ACCTTYPE	Account type <ul style="list-style-type: none"> • If unformatted, I, B, or R • If formatted, "Income," "Balance sheet," or "Retained earnings"
ACCTBAL	Normal balance <ul style="list-style-type: none"> • If unformatted, 1 for debit or 2 for normal credit • If formatted, "Debit" or "Credit"
ACTIVESW	Account status (Active or Inactive) <ul style="list-style-type: none"> • If unformatted, 1 for active or 0 for inactive • If formatted, "Active" or "Inactive"
CONSLDSW	Consolidation setting <ul style="list-style-type: none"> • If unformatted, 1 if transactions are consolidated on posting, 0 if they are not • If formatted, "Consolidate journals" or "Do not consolidate journals"
QTYSW	Quantity setting <ul style="list-style-type: none"> • If unformatted, 1 if quantities are used with account, 0 if not • If formatted, "Yes" or "No"
UOM	The unit of measure, if quantities are used
ALLOCSW	Allocation setting <ul style="list-style-type: none"> • If unformatted, 1 if account can be reallocated, 0 if not • If formatted, "Yes" or "No"
ACCTOFSET	Account number for reallocation
ACCTSRTY	Allocation transaction source code
ROLLUPSW	Rollup setting

Field Name	Description
	<ul style="list-style-type: none"> • If unformatted, 1 if account is a rollup account, 0 if not • If formatted, "Yes" or "No"
MCSW	Multicurrency setting <ul style="list-style-type: none"> • If unformatted, 1 if multicurrency, 0 if not • If formatted, "Yes" or "No"
SPECSW	Specific source currencies setting <ul style="list-style-type: none"> • If unformatted, 0 if all currencies, 1 if specified • If formatted, "All currency" or "Specific currency"
ACCTGRPCOD	Account group code
CTRLACCTSW	Control account setting <ul style="list-style-type: none"> • If unformatted, 1 if account is a control account, 0 if not • If formatted, "Control account" or "Non control account"
SRCELDGID <i>(Reserved field)</i>	Source ledger, if the account is a control account (for example, AR or AP).
ALLOCTOT	Percentage total of different allocation rates
ABRKID	Account structure code
YRACCTCLOS	Last year closed
ACCTFMTTD	Formatted account number
ACSEGVALn (n= 01 to 10)	Account segment code, 01 to 10
ACCTSEGVAL	Segment defined as the Account Segment in G/L Options
ACCTGRPSCD	Account group sort code
POSTOSEGID	The code for the segment used for account posting
DEFCURNCOD	Default currency code

Examples

Statement	Return Value
=FRACCT ("ACCTDESC","1000-333")	"Cost of goods sold"
=FRACCT ("QTYSW","1000-333","F')	"Yes"
=FRACCT("ACCTTYPE", "1000-333","FMT")	"Income"
=FRACCT ("A.ACCTCLASS","4000")	"Sales"
=FRACCT ("ACCTDESC","1000-333:1000-400")	<p>Prints a description that includes only those words that are common to each account in the account range.</p> <p>For example, if the accounts in the range have the following descriptions, the word "Receivable" would be the return value.</p> <ul style="list-style-type: none"> • Accounts Receivable: customers • Accounts Receivable: employees • Receivable: over 90 days

FRAMT

This function retrieves actual, budget, and quantity balances and net amounts from General Ledger accounts for a specified period.

All amounts returned by FRAMT respect the account type. Debit balances in debit accounts and credit balances in credit accounts are returned as positive numbers; credit balances in debit accounts and debit balances in credit accounts are returned as negative numbers.

Although FRAMT is similar to "FRAMTA" (page 121), FRAMTA returns all debit balances as positive numbers and all credit balances as negative numbers regardless if the account is a debit or credit type.

FRAMT is also similar to "FRTRN" (page 150), but FRAMT retrieves totals from account history, whereas FRTRN retrieves totals from transaction history.

Syntax

FRAMT(field name, account reference, criteria, currency)

Note: The function returns 0 if the account reference is missing, the account does not exist, or if no accounts exist in the specified range.

Arguments

Argument	Description
field name	<p>The name of a field from the General Ledger fiscal sets with an optional fiscal designator prefix and optional fiscal year suffix (separated from the field name with a period).</p> <p>The fiscal designator prefix can be:</p> <ul style="list-style-type: none"> • A. Actual amount • R. Rollup amounts. R must be the first character and can be used with other prefixes <p>Tip: In Excel, if you use the FR PASTE screen to add the FRAMT function to a statement, select the Use Rolled Up Amounts check box.</p> <ul style="list-style-type: none"> • P. Provisional amounts • Q. Quantities (either actual or provisional, depending on the report type)

Argument	Description
	<ul style="list-style-type: none"> • QA. Actual quantities • QP. Provisional quantities • 1 to 5. Budget set number <p>The number of available budget sets varies by product edition.</p> <ul style="list-style-type: none"> • 2 in Sage 300 Standard ERP • 3 in Sage 300 Advanced ERP • 5 in Sage 300 Premium ERP <p>Note: If no prefix is supplied, the default report setting is used (either actual or provisional, depending on the type of report). Similarly, if the fiscal prefix is "Q" or "RQ," actual or provisional quantities are returned, depending on the type of report.</p> <p>The fiscal year suffix can be:</p> <ul style="list-style-type: none"> • YYYY. A specific fiscal year, such as 2010 • Ln.n years ago relative to the current fiscal year; for example, L1 is last year, and L2 is 2 years ago • Nn.n years in the future relative to the current fiscal year; for example, N1 is next year, and N2 is the year after next <p>Note: If no suffix is supplied, the current fiscal year is used. Example: For the field name argument <i>ABALP.2008</i>, <i>ABALP</i> is the combination of fiscal set prefix and field name referencing the actual balance for the current period, and <i>2008</i> is the fiscal year suffix.</p>
account reference	A string specifying a single account or a range of accounts. See "About Account Number References" (page 59).
criteria (Optional)	An expression that imposes selection criteria on the accounts and account optional fields. The account reference and expression together determine the accounts and account optional fields that will be included in the calculation. See "About Selection Criteria for Filtering Accounts" (page 62).
currency (Optional)	<p>A string containing the currency reference. A currency reference has the form "CCC.T," where CCC is a 3-character currency code (for example, CAD for Canadian dollars, or USD for US dollars), and T is the currency type (also known as the currency code qualifier).</p> <p>The currency type can be:</p> <ul style="list-style-type: none"> • S. Source currency

Argument	Description
	<ul style="list-style-type: none"> • E. Functional equivalent of the source amount • F. Functional currency total (including functional equivalents of all source amounts) • R. Reporting currency total (includes reporting equivalents of all source amounts) <p style="text-align: center; border: 1px dashed black; padding: 5px;">Note: This option is only available if you select the Euro as your functional currency and specify a different reporting currency in Company Profile.</p> <p>Note: If no currency is supplied, functional (home) currency is used.</p>

Fiscal Set Field Names

Financial Reporter can retrieve the following balance and net change fields.

Note: In the Reporter Code Suffix, *n* is a number that can refer to the fiscal period (from 1 to 13), or to the quarter (from 1 to 4).

Period balance and net change

Field Description	Reporter Code Suffix	BAL (balance)	NET (net changes)
Current period	P	BALP ¹	NETP ²
Last period	LP	BALLP	NETLP
nth period	nP	BALnP	NETnP
n periods ago	nPA	BALnPA	NETnPA

¹BALP, BALnP, BALYTD, etc. include adjustments from period 14 only if the balance is for the final period of the year. BALY includes period 14. The closing entries are not included. To include closing entries, use BALCLOSE. To print the balance from the final fiscal period without the adjustment amount, use FRAMT("BALP")-FRAMT("NETADJ").

²NETP, NETnP, NET4Q, NETPQ will also include adjustments from period 14 if the net is requested for the final period of the year. (NET works like BAL.)

Quarter balance and net change

Field Description	Reporter Code Suffix	BAL (balance)	NET (net changes)
Current quarter (to end)	Q	BALQ	NETQ
Current quarter to date	QTD	BALQTD	NETQTD
Last quarter	LQ	BALLQ	NETLQ
Last quarter to date	LQTD	BALLQTD	NETLQTD
nth quarter	nQ	BALnQ	NETnQ
nth quarter to date ¹	nQTD	BALnQTD	NETnQTD
n quarters ago	nQA	BALnQA	NETnQA
n quarters ago to date ²	nQATD	BALnQATD	NETnQATD
Preceding quarter (3 periods) ³	PQ	BALPQ	NETPQ ⁴
Preceding quarter (n periods ago)	PQnPA	BALPQnPA	NETPQnPA

Half year balance and net change

Field Description	Reporter Code Suffix	BAL (balance)	NET (net changes)
Current half year (to end)	S	BALS	NETS

¹This code allows you to compare the current QTD to the QTD of a previous quarter by providing you with to-date figures relative to the current quarter. If you are now in period 2 of the current quarter, QTD will give you the first 2 periods of any previous quarter.

²nQATD lets you go up to four quarters ago. If you need to specify more, use nQATD.L1.

³PQ handles any three periods, providing you with revolving quarters. The preceding 3 periods include the current period plus the two previous ones.

⁴The NET for a group of periods that crosses a year-end boundary will also include the adjustments in period 14, but not include the closing entry; otherwise, the net would include the zeroing entries in income and expense accounts.

Field Description	Reporter Code Suffix	BAL (balance)	NET (net changes)
Current half year to date	STD	BALSTD	NETSTD
Last half year	LS	BALLS	NETLS
Last half year to date	LSTD	BALLSTD	NETLSTD
nth half year	nS	BALnS	NETnS
hth half year to date ¹	nSTD	BALnSTD	NETnSTD
n half years ago	nSA	BALnSA	NETnSA
n half years ago to date ²	nSATD	BALnSATD	NETnSATD
Preceding half year (6 periods) ³	PS	BALPS	NETPS
Preceding half year (n periods ago)	PSnPA	BALPSnPA	NETPSnPA

Total year balance and net change

Field Description	Reporter Code Suffix	BAL (balance)	NET (net changes)
Total year	Y	BALY	NETY
Year to date	YTD	BALYTD	NETYTD
Preceding year (12 or 13 periods)	PY	BALPY	NETPY
Preceding year (n periods ago)	PYnPA	BALPYnPA	NETPYnPA
Beginning of year	OPEN	BALOPEN	

¹This code allows you to compare the current half year TD to the half year TD of a previous half year by providing you with to-date figures relative to the current half year. If you are now in period 2 of the current half year, half year TD will give you the first 2 periods of any previous half year.

²nSATD lets you go up to 2 half years ago. If you need to specify more, use nSATD.L1.

³PS handles any six periods, providing you with revolving half years. The preceding six periods includes the current period plus the five previous ones.

Field Description	Reporter Code Suffix	BAL (balance)	NET (net changes)
End of year ¹	CLOSE	BALCLOSE	NETCLOSE
Period 14 adjustments	ADJ		NETADJ ²

Note:

- You can print year-end adjustments and transactions to close income accounts to retained earnings with NETADJ, and print closing figures with NETCLOSE and BALCLOSE.
- All fiscal field set values are calculated relative to the fiscal period set for the report, with the exception of BALOPEN, NETADJ, and NETCLOSE, and fields that reference a specific time period.
 - BALOPEN is the opening balance of the account for the year.
 - NETADJ is the amount posted to the adjustment period.
 - NETCLOSE is the amount posted to the closing period.
- If there are no records for a future period, zero is returned.
- You can use a fiscal set prefix with NET and BAL to return specific values. For example:
 - BALP provides the actual balance (or provisional balance for supported functions) for the current fiscal period.
 - ABALP provides the actual balance for the current fiscal period.
 - 1BALP provides the balance from budget set 1 for the current fiscal period (for functions that can reference budget sets).

¹BALCLOSE acts like BALP in every period except the last period of the year, when it includes the adjustments and the closing entry. NETCLOSE provides the closing entry only.

²NETADJ provides the amount from period 14. To print the balance from the final fiscal period without the adjustment amount, use FRAMT("BALP")-FRAMT("NETADJ").

Examples

Statement	Return Value
=FRAMT ("PBALP.L1","1000-33- 248"; "DEM.S")	The provisionally-posted balance of Deutsche Marks (in source currency) to account 1000-33-248 for the current period last year
=FRAMT("QBALP","2000")	The quantity balance of the current period for account 2000
=FRAMT ("ABAL.2010","1000%%", "(ACCTTYPE="B")")	The total actual balance for all balance sheet accounts with account numbers starting with "1000" for the year 2010

FRAMTA

This function is similar to "FRAMT" (page 114). It has the same arguments as FRAMT, and returns the same data. The difference is that the sign of the return value is dependent on the account type for FRAMT, but not for FRAMTA.

FRAMTA returns all debit balances as positive numbers, and all credit balances as negative numbers, making it easy to sum a range of accounts without regard for the account type. By contrast, FRAMT returns debit balances in credit accounts as negative numbers and credit balances in credit accounts as positive numbers.

Syntax

```
FRAMTA(field name, account reference, criteria, currency)
```

Note: The function returns 0 if the account reference is missing, the account does not exist, or if no accounts exist in the specified range.

Arguments

Argument	Description
field name	<p>The name of a field from the General Ledger fiscal sets with an optional fiscal designator prefix and optional fiscal year suffix (separated from the field name with a period).</p> <p>The fiscal designator prefix can be:</p> <ul style="list-style-type: none"> • A. Actual amount • R. Rollup amounts. R must be the first character and can be used with other prefixes <p>Tip: In Excel, if you use the FR PASTE screen to add the FRAMT function to a statement, select the Use Rolled Up Amounts check box.</p> <ul style="list-style-type: none"> • P. Provisional amounts • Q. Quantities (either actual or provisional, depending on the report type) • QA. Actual quantities • QP. Provisional quantities

Argument	Description
	<ul style="list-style-type: none"> • 1 to 5. Budget set number <p>The number of available budget sets varies by product edition.</p> <ul style="list-style-type: none"> • 2 in Sage 300 Standard ERP • 3 in Sage 300 Advanced ERP • 5 in Sage 300 Premium ERP <p>Note: If no prefix is supplied, the default report setting is used (either actual or provisional, depending on the type of report). Similarly, if the fiscal prefix is "Q" or "RQ," actual or provisional quantities are returned, depending on the type of report.</p> <p>The fiscal year suffix can be:</p> <ul style="list-style-type: none"> • YYYY. A specific fiscal year, such as 2010 • Ln.n years ago relative to the current fiscal year; for example, L1 is last year, and L2 is 2 years ago • Nn.n years in the future relative to the current fiscal year; for example, N1 is next year, and N2 is the year after next <p>Note: If no suffix is supplied, the current fiscal year is used. Example: For the field name argument <i>ABALP.2008</i>, <i>ABALP</i> is the combination of fiscal set prefix and field name referencing the actual balance for the current period, and <i>2008</i> is the fiscal year suffix.</p>
account reference	A string specifying a single account or a range of accounts. See "About Account Number References" (page 59).
criteria (Optional)	An expression that imposes selection criteria on the accounts and account optional fields. The account reference and expression together determine the accounts and account optional fields that will be included in the calculation. See "About Selection Criteria for Filtering Accounts" (page 62).
currency (Optional)	<p>A string containing the currency reference. A currency reference has the form "CCC.T," where CCC is a 3-character currency code (for example, CAD for Canadian dollars, or USD for US dollars), and T is the currency type (also known as the currency code qualifier).</p> <p>The currency type can be:</p> <ul style="list-style-type: none"> • S. Source currency • E. Functional equivalent of the source amount • F. Functional currency total (including functional equivalents of all

Argument	Description
	<p>source amounts)</p> <ul style="list-style-type: none"> • R. Reporting currency total (includes reporting equivalents of all source amounts) <p>Note: This option is only available if you select the Euro as your functional currency and specify a different reporting currency in Company Profile.</p> <p>Note: If no currency is supplied, functional (home) currency is used.</p>

Fiscal Set Field Names

Financial Reporter can retrieve the following balance and net change fields.

Note: In the Reporter Code Suffix, *n* is a number that can refer to the fiscal period (from 1 to 13), or to the quarter (from 1 to 4).

Period balance and net change

Field Description	Reporter Code Suffix	BAL (balance)	NET (net changes)
Current period	P	BALP ¹	NETP ²
Last period	LP	BALLP	NETLP
nth period	nP	BALnP	NETnP
n periods ago	nPA	BALnPA	NETnPA

¹BALP, BALnP, BALYTD, etc. include adjustments from period 14 only if the balance is for the final period of the year. BALY includes period 14. The closing entries are not included. To include closing entries, use BALCLOSE. To print the balance from the final fiscal period without the adjustment amount, use FRAMT ("BALP")-FRAMT("NETADJ").

²NETP, NETnP, NET4Q, NETPQ will also include adjustments from period 14 if the net is requested for the final period of the year. (NET works like BAL.)

Quarter balance and net change

Field Description	Reporter Code Suffix	BAL (balance)	NET (net changes)
Current quarter (to end)	Q	BALQ	NETQ
Current quarter to date	QTD	BALQTD	NETQTD
Last quarter	LQ	BALLQ	NETLQ
Last quarter to date	LQTD	BALLQTD	NETLQTD
nth quarter	nQ	BALnQ	NETnQ
nth quarter to date ¹	nQTD	BALnQTD	NETnQTD
n quarters ago	nQA	BALnQA	NETnQA
n quarters ago to date ²	nQATD	BALnQATD	NETnQATD
Preceding quarter (3 periods) ³	PQ	BALPQ	NETPQ ⁴
Preceding quarter (n periods ago)	PQnPA	BALPQnPA	NETPQnPA

Half year balance and net change

Field Description	Reporter Code Suffix	BAL (balance)	NET (net changes)
Current half year (to end)	S	BALS	NETS

¹This code allows you to compare the current QTD to the QTD of a previous quarter by providing you with to-date figures relative to the current quarter. If you are now in period 2 of the current quarter, QTD will give you the first 2 periods of any previous quarter.

²nQATD lets you go up to four quarters ago. If you need to specify more, use nQATD.L1.

³PQ handles any three periods, providing you with revolving quarters. The preceding 3 periods include the current period plus the two previous ones.

⁴The NET for a group of periods that crosses a year-end boundary will also include the adjustments in period 14, but not include the closing entry; otherwise, the net would include the zeroing entries in income and expense accounts.

Field Description	Reporter Code Suffix	BAL (balance)	NET (net changes)
Current half year to date	STD	BALSTD	NETSTD
Last half year	LS	BALLS	NETLS
Last half year to date	LSTD	BALLSTD	NETLSTD
nth half year	nS	BALnS	NETnS
hth half year to date ¹	nSTD	BALnSTD	NETnSTD
n half years ago	nSA	BALnSA	NETnSA
n half years ago to date ²	nSATD	BALnSATD	NETnSATD
Preceding half year (6 periods) ³	PS	BALPS	NETPS
Preceding half year (n periods ago)	PSnPA	BALPSnPA	NETPSnPA

Total year balance and net change

Field Description	Reporter Code Suffix	BAL (balance)	NET (net changes)
Total year	Y	BALY	NETY
Year to date	YTD	BALYTD	NETYTD
Preceding year (12 or 13 periods)	PY	BALPY	NETPY
Preceding year (n periods ago)	PYnPA	BALPYnPA	NETPYnPA
Beginning of year	OPEN	BALOPEN	

¹This code allows you to compare the current half year TD to the half year TD of a previous half year by providing you with to-date figures relative to the current half year. If you are now in period 2 of the current half year, half year TD will give you the first 2 periods of any previous half year.

²nSATD lets you go up to 2 half years ago. If you need to specify more, use nSATD.L1.

³PS handles any six periods, providing you with revolving half years. The preceding six periods includes the current period plus the five previous ones.

Field Description	Reporter Code Suffix	BAL (balance)	NET (net changes)
End of year ¹	CLOSE	BALCLOSE	NETCLOSE
Period 14 adjustments	ADJ		NETADJ ²

Note:

- You can print year-end adjustments and transactions to close income accounts to retained earnings with NETADJ, and print closing figures with NETCLOSE and BALCLOSE.
- All fiscal field set values are calculated relative to the fiscal period set for the report, with the exception of BALOPEN, NETADJ, and NETCLOSE, and fields that reference a specific time period.
 - BALOPEN is the opening balance of the account for the year.
 - NETADJ is the amount posted to the adjustment period.
 - NETCLOSE is the amount posted to the closing period.
- If there are no records for a future period, zero is returned.
- You can use a fiscal set prefix with NET and BAL to return specific values. For example:
 - BALP provides the actual balance (or provisional balance for supported functions) for the current fiscal period.
 - ABALP provides the actual balance for the current fiscal period.
 - 1BALP provides the balance from budget set 1 for the current fiscal period (for functions that can reference budget sets).

¹BALCLOSE acts like BALP in every period except the last period of the year, when it includes the adjustments and the closing entry. NETCLOSE provides the closing entry only.

²NETADJ provides the amount from period 14. To print the balance from the final fiscal period without the adjustment amount, use FRAMT("BALP")-FRAMT("NETADJ").

Examples

The following examples show the differences between the return values for the FRAMT and FRAMTA functions.

AccountType	Value	FRAMT Return Value	FRAMTA Return Value
Debit	100 DR	100	100
Debit	100 CR	-100	-100
Credit	100 CR	100	-100
Credit	100 DR	-100	100

FRCREDIT

This function is the same as "FRAMT" (page 114), except that it returns values for *only those accounts that have credit amounts (balances or net changes)*—regardless of whether the account is a debit or credit account.

Note: This function can retrieve budget and provisional amounts, calculate balances, and include rollup amounts and rollup members accounts.

Syntax

FRCREDIT(field name, account reference, criteria, currency)

Tip: Use the criteria argument to restrict this function to credit (CR) account types.

FRCREDIT returns the credit value of the account, with the following exceptions:

- Returns blank if the value of a debit account is zero or a debit amount
- Returns 0 if the value of a credit account is zero
- Returns "0" if the account reference is missing or if a specified account cannot be found

Arguments

Argument	Description
field name	<p>The name of a field from the General Ledger fiscal sets with an optional fiscal designator prefix and optional fiscal year suffix (separated from the field name with a period).</p> <p>The fiscal designator prefix can be:</p> <ul style="list-style-type: none"> • A. Actual amount • R. Rollup amounts. R must be the first character and can be used with other prefixes <p>Tip: In Excel, if you use the FR PASTE screen to add the FRAMT function to a statement, select the Use Rolled Up Amounts check box.</p> <ul style="list-style-type: none"> • P. Provisional amounts • Q. Quantities (either actual or provisional, depending on the report)

Argument	Description
	<p>type)</p> <ul style="list-style-type: none"> • QA. Actual quantities • QP. Provisional quantities • 1 to 5. Budget set number <p>The number of available budget sets varies by product edition.</p> <ul style="list-style-type: none"> • 2 in Sage 300 Standard ERP • 3 in Sage 300 Advanced ERP • 5 in Sage 300 Premium ERP <p>Note: If no prefix is supplied, the default report setting is used (either actual or provisional, depending on the type of report). Similarly, if the fiscal prefix is "Q" or "RQ," actual or provisional quantities are returned, depending on the type of report.</p> <p>The fiscal year suffix can be:</p> <ul style="list-style-type: none"> • YYYY. A specific fiscal year, such as 2010 • Ln.n years ago relative to the current fiscal year; for example, L1 is last year, and L2 is 2 years ago • Nn.n years in the future relative to the current fiscal year; for example, N1 is next year, and N2 is the year after next <p>Note: If no suffix is supplied, the current fiscal year is used. Example: For the field name argument <i>ABALP.2008</i>, <i>ABALP</i> is the combination of fiscal set prefix and field name referencing the actual balance for the current period, and <i>2008</i> is the fiscal year suffix.</p>
account reference	A string specifying a single account or a range of accounts. See "About Account Number References" (page 59).
criteria (Optional)	An expression that imposes selection criteria on the accounts and account optional fields. The account reference and expression together determine the accounts and account optional fields that will be included in the calculation. See "About Selection Criteria for Filtering Accounts" (page 62).
currency (Optional)	<p>A string containing the currency reference. A currency reference has the form "CCC.T," where CCC is a 3-character currency code (for example, CAD for Canadian dollars, or USD for US dollars), and T is the currency type (also known as the currency code qualifier).</p> <p>The currency type can be:</p>

Argument	Description
	<ul style="list-style-type: none"> • S. Source currency • E. Functional equivalent of the source amount • F. Functional currency total (including functional equivalents of all source amounts) • R. Reporting currency total (includes reporting equivalents of all source amounts) <hr style="border-top: 1px dashed #000;"/> <p>Note: This option is only available if you select the Euro as your functional currency and specify a different reporting currency in Company Profile.</p> <hr style="border-top: 1px dashed #000;"/> <p>Note: If no currency is supplied, functional (home) currency is used.</p>

Fiscal Set Field Names

Financial Reporter can retrieve the following balance and net change fields.

Note: In the Reporter Code Suffix, *n* is a number that can refer to the fiscal period (from 1 to 13), or to the quarter (from 1 to 4).

Period balance and net change

Field Description	Reporter Code Suffix	BAL (balance)	NET (net changes)
Current period	P	BALP ¹	NETP ²
Last period	LP	BALLP	NETLP
nth period	nP	BALnP	NETnP
n periods ago	nPA	BALnPA	NETnPA

¹BALP, BALnP, BALYTD, etc. include adjustments from period 14 only if the balance is for the final period of the year. BALY includes period 14. The closing entries are not included. To include closing entries, use BALCLOSE. To print the balance from the final fiscal period without the adjustment amount, use FRAMT("BALP")-FRAMT("NETADJ").

²NETP, NETnP, NET4Q, NETPQ will also include adjustments from period 14 if the net is requested for the final period of the year. (NET works like BAL.)

Quarter balance and net change

Field Description	Reporter Code Suffix	BAL (balance)	NET (net changes)
Current quarter (to end)	Q	BALQ	NETQ
Current quarter to date	QTD	BALQTD	NETQTD
Last quarter	LQ	BALLQ	NETLQ
Last quarter to date	LQTD	BALLQTD	NETLQTD
nth quarter	nQ	BALnQ	NETnQ
nth quarter to date ¹	nQTD	BALnQTD	NETnQTD
n quarters ago	nQA	BALnQA	NETnQA
n quarters ago to date ²	nQATD	BALnQATD	NETnQATD
Preceding quarter (3 periods) ³	PQ	BALPQ	NETPQ ⁴
Preceding quarter (n periods ago)	PQnPA	BALPQnPA	NETPQnPA

Half year balance and net change

Field Description	Reporter Code Suffix	BAL (balance)	NET (net changes)
Current half year (to end)	S	BALS	NETS

¹This code allows you to compare the current QTD to the QTD of a previous quarter by providing you with to-date figures relative to the current quarter. If you are now in period 2 of the current quarter, QTD will give you the first 2 periods of any previous quarter.

²nQATD lets you go up to four quarters ago. If you need to specify more, use nQATD.L1.

³PQ handles any three periods, providing you with revolving quarters. The preceding 3 periods include the current period plus the two previous ones.

⁴The NET for a group of periods that crosses a year-end boundary will also include the adjustments in period 14, but not include the closing entry; otherwise, the net would include the zeroing entries in income and expense accounts.

Field Description	Reporter Code Suffix	BAL (balance)	NET (net changes)
Current half year to date	STD	BALSTD	NETSTD
Last half year	LS	BALLS	NETLS
Last half year to date	LSTD	BALLSTD	NETLSTD
nth half year	nS	BALnS	NETnS
hth half year to date ¹	nSTD	BALnSTD	NETnSTD
n half years ago	nSA	BALnSA	NETnSA
n half years ago to date ²	nSATD	BALnSATD	NETnSATD
Preceding half year (6 periods) ³	PS	BALPS	NETPS
Preceding half year (n periods ago)	PSnPA	BALPSnPA	NETPSnPA

Total year balance and net change

Field Description	Reporter Code Suffix	BAL (balance)	NET (net changes)
Total year	Y	BALY	NETY
Year to date	YTD	BALYTD	NETYTD
Preceding year (12 or 13 periods)	PY	BALPY	NETPY
Preceding year (n periods ago)	PYnPA	BALPYnPA	NETPYnPA
Beginning of year	OPEN	BALOPEN	

¹This code allows you to compare the current half year TD to the half year TD of a previous half year by providing you with to-date figures relative to the current half year. If you are now in period 2 of the current half year, half year TD will give you the first 2 periods of any previous half year.

²nSATD lets you go up to 2 half years ago. If you need to specify more, use nSATD.L1.

³PS handles any six periods, providing you with revolving half years. The preceding six periods includes the current period plus the five previous ones.

Field Description	Reporter Code Suffix	BAL (balance)	NET (net changes)
End of year ¹	CLOSE	BALCLOSE	NETCLOSE
Period 14 adjustments	ADJ		NETADJ ²

Note:

- You can print year-end adjustments and transactions to close income accounts to retained earnings with NETADJ, and print closing figures with NETCLOSE and BALCLOSE.
- All fiscal field set values are calculated relative to the fiscal period set for the report, with the exception of BALOPEN, NETADJ, and NETCLOSE, and fields that reference a specific time period.
 - BALOPEN is the opening balance of the account for the year.
 - NETADJ is the amount posted to the adjustment period.
 - NETCLOSE is the amount posted to the closing period.
- If there are no records for a future period, zero is returned.
- You can use a fiscal set prefix with NET and BAL to return specific values. For example:
 - BALP provides the actual balance (or provisional balance for supported functions) for the current fiscal period.
 - ABALP provides the actual balance for the current fiscal period.
 - 1BALP provides the balance from budget set 1 for the current fiscal period (for functions that can reference budget sets).

¹BALCLOSE acts like BALP in every period except the last period of the year, when it includes the adjustments and the closing entry. NETCLOSE provides the closing entry only.

²NETADJ provides the amount from period 14. To print the balance from the final fiscal period without the adjustment amount, use FRAMT("BALP")-FRAMT("NETADJ").

Examples

The following examples show the differences between the return values for the FRAMT and FRCREDIT functions.

Account Type	Value	FRAMT Return Value	FRCREDIT Return Value
Credit	100 CR	100	100
Credit	0	0	0
Debit	0	0	blank
Debit	100 CR	-100	100
Debit	100 DR	100	blank

FRDEBIT

This function is the same as "FRAMT" (page 114), except that it returns values for *only those accounts that have debit amounts (balances or net changes)*—regardless of whether the account is a debit or credit account.

Note: This function can retrieve budget and provisional amounts, calculate balances, and include rollup amounts and rollup members accounts.

Syntax

FRDEBIT(field name, account reference, criteria, currency)

Tip: Use the criteria argument to restrict this function to debit (DR) account types.

FRDEBIT returns the debit value of the account, with the following exceptions:

- Returns blank if the value of a credit account is zero or a credit amount
- Returns 0 if the value of a debit account is zero
- Returns "0" if the account reference is missing or if a specified account cannot be found

Arguments

Argument	Description
field name	<p>The name of a field from the General Ledger fiscal sets with an optional fiscal designator prefix and optional fiscal year suffix (separated from the field name with a period).</p> <p>The fiscal designator prefix can be:</p> <ul style="list-style-type: none"> • A. Actual amount • R. Rollup amounts. R must be the first character and can be used with other prefixes <p>Tip: In Excel, if you use the FR PASTE screen to add the FRAMT function to a statement, select the Use Rolled Up Amounts check box.</p> <ul style="list-style-type: none"> • P. Provisional amounts

Argument	Description
	<ul style="list-style-type: none"> • Q. Quantities (either actual or provisional, depending on the report type) • QA. Actual quantities • QP. Provisional quantities • 1 to 5. Budget set number <p>The number of available budget sets varies by product edition.</p> <ul style="list-style-type: none"> • 2 in Sage 300 Standard ERP • 3 in Sage 300 Advanced ERP • 5 in Sage 300 Premium ERP <p>Note: If no prefix is supplied, the default report setting is used (either actual or provisional, depending on the type of report). Similarly, if the fiscal prefix is "Q" or "RQ," actual or provisional quantities are returned, depending on the type of report.</p> <p>The fiscal year suffix can be:</p> <ul style="list-style-type: none"> • YYYY. A specific fiscal year, such as 2010 • Ln.n years ago relative to the current fiscal year; for example, L1 is last year, and L2 is 2 years ago • Nn.n years in the future relative to the current fiscal year; for example, N1 is next year, and N2 is the year after next <p>Note: If no suffix is supplied, the current fiscal year is used. Example: For the field name argument <i>ABALP.2008</i>, <i>ABALP</i> is the combination of fiscal set prefix and field name referencing the actual balance for the current period, and <i>2008</i> is the fiscal year suffix.</p>
account reference	A string specifying a single account or a range of accounts. See "About Account Number References" (page 59).
criteria (Optional)	An expression that imposes selection criteria on the accounts and account optional fields. The account reference and expression together determine the accounts and account optional fields that will be included in the calculation. See "About Selection Criteria for Filtering Accounts" (page 62).
currency (Optional)	A string containing the currency reference. A currency reference has the form "CCC.T," where CCC is a 3-character currency code (for example, CAD for Canadian dollars, or USD for US dollars), and T is the currency type (also known as the currency code qualifier).

Argument	Description
	<p>The currency type can be:</p> <ul style="list-style-type: none"> • S. Source currency • E. Functional equivalent of the source amount • F. Functional currency total (including functional equivalents of all source amounts) • R. Reporting currency total (includes reporting equivalents of all source amounts) <div style="border: 1px dashed gray; padding: 5px; margin: 10px 0;"> <p>Note: This option is only available if you select the Euro as your functional currency and specify a different reporting currency in Company Profile.</p> </div> <p>Note: If no currency is supplied, functional (home) currency is used.</p>

Fiscal Set Field Names

Financial Reporter can retrieve the following balance and net change fields.

Note: In the Reporter Code Suffix, *n* is a number that can refer to the fiscal period (from 1 to 13), or to the quarter (from 1 to 4).

Period balance and net change

Field Description	Reporter Code Suffix	BAL (balance)	NET (net changes)
Current period	P	BALP ¹	NETP ²
Last period	LP	BALLP	NETLP
nth period	nP	BALnP	NETnP
n periods ago	nPA	BALnPA	NETnPA

¹BALP, BALnP, BALYTD, etc. include adjustments from period 14 only if the balance is for the final period of the year. BALY includes period 14. The closing entries are not included. To include closing entries, use BALCLOSE. To print the balance from the final fiscal period without the adjustment amount, use FRAMT ("BALP")-FRAMT("NETADJ").

²NETP, NETnP, NET4Q, NETPQ will also include adjustments from period 14 if the net is requested for the final period of the year. (NET works like BAL.)

Quarter balance and net change

Field Description	Reporter Code Suffix	BAL (balance)	NET (net changes)
Current quarter (to end)	Q	BALQ	NETQ
Current quarter to date	QTD	BALQTD	NETQTD
Last quarter	LQ	BALLQ	NETLQ
Last quarter to date	LQTD	BALLQTD	NETLQTD
nth quarter	nQ	BALnQ	NETnQ
nth quarter to date ¹	nQTD	BALnQTD	NETnQTD
n quarters ago	nQA	BALnQA	NETnQA
n quarters ago to date ²	nQATD	BALnQATD	NETnQATD
Preceding quarter (3 periods) ³	PQ	BALPQ	NETPQ ⁴
Preceding quarter (n periods ago)	PQnPA	BALPQnPA	NETPQnPA

Half year balance and net change

Field Description	Reporter Code Suffix	BAL (balance)	NET (net changes)
Current half year (to end)	S	BALS	NETS

¹This code allows you to compare the current QTD to the QTD of a previous quarter by providing you with to-date figures relative to the current quarter. If you are now in period 2 of the current quarter, QTD will give you the first 2 periods of any previous quarter.

²nQATD lets you go up to four quarters ago. If you need to specify more, use nQATD.L1.

³PQ handles any three periods, providing you with revolving quarters. The preceding 3 periods include the current period plus the two previous ones.

⁴The NET for a group of periods that crosses a year-end boundary will also include the adjustments in period 14, but not include the closing entry; otherwise, the net would include the zeroing entries in income and expense accounts.

Field Description	Reporter Code Suffix	BAL (balance)	NET (net changes)
Current half year to date	STD	BALSTD	NETSTD
Last half year	LS	BALLS	NETLS
Last half year to date	LSTD	BALLSTD	NETLSTD
nth half year	nS	BALnS	NETnS
hth half year to date ¹	nSTD	BALnSTD	NETnSTD
n half years ago	nSA	BALnSA	NETnSA
n half years ago to date ²	nSATD	BALnSATD	NETnSATD
Preceding half year (6 periods) ³	PS	BALPS	NETPS
Preceding half year (n periods ago)	PSnPA	BALPSnPA	NETPSnPA

Total year balance and net change

Field Description	Reporter Code Suffix	BAL (balance)	NET (net changes)
Total year	Y	BALY	NETY
Year to date	YTD	BALYTD	NETYTD
Preceding year (12 or 13 periods)	PY	BALPY	NETPY
Preceding year (n periods ago)	PYnPA	BALPYnPA	NETPYnPA
Beginning of year	OPEN	BALOPEN	

¹This code allows you to compare the current half year TD to the half year TD of a previous half year by providing you with to-date figures relative to the current half year. If you are now in period 2 of the current half year, half year TD will give you the first 2 periods of any previous half year.

²nSATD lets you go up to 2 half years ago. If you need to specify more, use nSATD.L1.

³PS handles any six periods, providing you with revolving half years. The preceding six periods includes the current period plus the five previous ones.

Field Description	Reporter Code Suffix	BAL (balance)	NET (net changes)
End of year ¹	CLOSE	BALCLOSE	NETCLOSE
Period 14 adjustments	ADJ		NETADJ ²

Note:

- You can print year-end adjustments and transactions to close income accounts to retained earnings with NETADJ, and print closing figures with NETCLOSE and BALCLOSE.
- All fiscal field set values are calculated relative to the fiscal period set for the report, with the exception of BALOPEN, NETADJ, and NETCLOSE, and fields that reference a specific time period.
 - BALOPEN is the opening balance of the account for the year.
 - NETADJ is the amount posted to the adjustment period.
 - NETCLOSE is the amount posted to the closing period.
- If there are no records for a future period, zero is returned.
- You can use a fiscal set prefix with NET and BAL to return specific values. For example:
 - BALP provides the actual balance (or provisional balance for supported functions) for the current fiscal period.
 - ABALP provides the actual balance for the current fiscal period.
 - 1BALP provides the balance from budget set 1 for the current fiscal period (for functions that can reference budget sets).

¹BALCLOSE acts like BALP in every period except the last period of the year, when it includes the adjustments and the closing entry. NETCLOSE provides the closing entry only.

²NETADJ provides the amount from period 14. To print the balance from the final fiscal period without the adjustment amount, use FRAMT("BALP")-FRAMT("NETADJ").

Examples

The following examples show the differences between the return values for the FRAMT and FRDEBIT functions.

Account Type	Value	FRAMT Return Value	FRDEBIT Return Value
Debit	100 DR	100	100
Debit	0	0	0
Credit	0	0	
Credit	100 DR	-100	100
Credit	100 CR	100	blank

FRFISCAL

This function returns a date (as a string) from the fiscal calendar in Common Services.

Syntax

FRFISCAL(option, fiscal year, fiscal period, formatted)

Arguments

Argument	Description
option	<p>The period or quarter date.</p> <p>Valid parameters are:</p> <ul style="list-style-type: none"> • Start: Start date of the period • End: End date of the period • QStart: Start date of the quarter • QEnd: End data of the quarter
fiscal year (Optional)	<p>Valid parameters are:</p> <ul style="list-style-type: none"> • YYYY: A specific 4-digit fiscal year, such as 2010 • Ln: <i>n</i> years ago, relative to the current fiscal year; for example, L1 is last year, and L2 is 2 years ago • Nn: <i>n</i> years in the future, relative to the current fiscal year; for example, N1 is next year, and N2 is the year after next <p>If not specified, assumed to be the current year.</p>
fiscal period (Optional)	<p>Fiscal period number from 1 to 12. If not specified, the current period is used.</p> <p>Note: This field is an integer so is not enclosed in quotation marks.</p>
formatted (Optional)	<p>Indicates whether the return value should be formatted according to the presentation defined in the view. If omitted, the default is "Formatted." Use one of the following constructs:</p> <ul style="list-style-type: none"> • "FORMATTED", "F", or "FMT" • "UNFORMATTED", "U", or "UNFMT"

Examples

Statement	Return Value
=FRFISCAL("Start")	11/01/2009
=FRFISCAL("Start", "", "O", "U")	20081101
=FRFISCAL("Start", "L1", VALUE(FR ("Period")), "F")	11/01/2008

FRPOST

This function retrieves account and transaction detail information from posted G/L transactions. It can also retrieve transaction optional fields and account optional field data for the account specified in the transaction record.

Details can be consolidated or not consolidated. That is, if the result of FRPOST (or "FRACCT" (page 110)) is derived from more than one transaction, and if the result is from an optional field of type Integer, Number, or Amount, you can print a consolidated total that sums up all values from the retrieved optional fields or print the value of the first retrieved record that has an optional field value.

- If an optional field name is specified as is, or [C] is appended to the field name, a consolidated total is printed.
- If [U] is appended to the specified optional field name, only the first optional field value is reported.

Syntax

FRPOST(field name, account reference, criteria, formatted)

The function can retrieve data from all G/L account fields and account optional fields defined for "FRACCT" (page 110), It can also reference transaction optional fields defined in G/L Setup, and the following G/L transaction fields:

Transaction Field Name	Description
DEFCURNCOD	Default currency code
FISCALYR	Fiscal year
FISCALPERD	Fiscal period
SRCECURN	Source currency code
SRCELEDGER	Source ledger code
SRCETYPE	Source type code
POSTINGSEQ	Posting sequence number
CNTDETAIL	Detail count
JRNLDATE	Journal date
BATCHNBR	Batch number

Transaction Field Name	Description
ENTRYNBR	Journal entry number
TRANSNBR	Journal transaction number
CONSOLIDAT	Consolidation occurred on post
JNLDTLDESC	Journal detail description
JNLDTLREF	Journal detail reference
TRANSAMT	Journal transaction amount (functional amount)
TRANSQTY	Journal transaction quantity
SCURNAMT	Journal source currency amount
RATETYPE	Currency Rate Table type
RATEDATE	Date of currency rate selected
CONVRATE	Currency rate for conversion
RATEOPER	Currency rate operator

Arguments

Argument	Description
field name	<p>The name of a field from the G/L account record, including account and transaction optional fields.</p> <p>Note:</p> <ul style="list-style-type: none"> Account optional fields have an A. prefix Transaction optional fields have a T. prefix
account reference	A string specifying a single account or a range of accounts. See "About Account Number References" (page 59).
criteria	An expression that imposes selection criteria on the accounts. The account reference and expression together determine the accounts that will be included in the calculation. See "About Selection Criteria for Filtering Accounts" (page 62).
formatted (<i>Optional</i>)	<p>Indicates whether the return value should be formatted according to the presentation defined in the view. If omitted, the default is "Formatted." Use one of the following constructs:</p> <ul style="list-style-type: none"> "FORMATTED", "F", or "FMT" "UNFORMATTED", "U", or "UNFMT"

Examples

Statement	Return Value
=FRPOST ("TRANSAMT", "1000", (POSTINGSEQ = 100) ", "U")	Retrieves unformatted transaction amounts for Account 1000 that have a posting sequence number of 100.
=FRPOST ("TRANSAMT", "1000", (JRNLDATE = 20100110)", "U")	Retrieves the unformatted transaction amount from Account 1000 from January 10, 2010.
=FRPOST ("ACCTDESC", "1000")	Retrieves the account description from Account 1000.
=FRPOST ("T.QTY", "4000")	Retrieves the transaction optional value for QTY for Account 4000 for the inquired period.

Note: Account numbers and transaction date are shown in the examples; however, this information can be set in the report specification—the account number in column A, and other criteria, such as the transaction date, in column B.

FRRATE

This function returns the exchange rate, as a multiplier, for converting amounts from source to functional currency. If the exchange rate is defined as a divisor, Sage 300 ERP provides its reciprocal.

Syntax

FRRATE(functional currency, source currency, rate type, rate date, option)

Arguments

Argument	Description
functional currency	Functional (home) currency code
source currency	Source currency code
rate type	Rate type code
rate date (Optional)	<p>If the period end date is not specified, Financial Reporter will use:</p> <ul style="list-style-type: none"> The period end date defined in the report specification The session date, if the report is not generated from a report specification <p>The date is specified as <code>DATE (YYYY, MM, DD)</code>. Note that the <code>DATE ()</code> spreadsheet function returns the serial number of the date.</p>
option (Optional)	<p>This argument is only required for handling exchange rates for euro-member currencies that use the Euro Conversion Rates table, such as francs or schillings.</p> <p>Use one of the following parameters to choose which part of the currency exchange rate (from euro-member currency to non-euro-member currency) you want the function to provide:</p> <ul style="list-style-type: none"> RF returns the floating portion value of the exchange rate—the portion not fixed between the euro and non-euro-member currencies. RF returns a "1" if the currencies are euro-member, and the year is greater or equal to 1999. RC returns the composite exchange rate—the effective rate between a non-euro currency and a euro-member currency. This is the default if no value is specified.

Argument	Description
	<p>Note:</p> <ul style="list-style-type: none"> • For non-euro currencies, RC will look up the rate in the Currency Rate table. • If the source and functional currencies are both euro-member currencies, RC will return the rate from the Euro Conversion Rates table. • If the functional currency is the euro, and the source is not a euro-member currency, RC will return the effective exchange rate between the two currencies.

Examples

Some of the following example use the spreadsheet function `DATEVALUE`. This function converts a textual representation of a date (such as the date string returned by `FRFISCA`) to a serial number, which `FRRATE` accepts.

Statement	Return Value
=FRRATE("USD","CAD","AV")	.75
=FRRATE("USD","CAD","SP", DATE(2009,10,31))	.75
=FRRATE("USD","CAD","SP", DATEVALUE(FRFISCAL("Start")))	.75
=FRRATE("ATS","EUR","AV", DATEVALUE(FRFISCAL("Start")),"RC")	13.760300
=FRRATE("USD","ATS","AV", DATEVALUE(FRFISCAL("Start")),"RF")	.88274
<p>Note: This function returns the floating exchange component between the Austrian schilling and the US dollar. In this case, this is the euro to US dollar exchange rate.</p>	

FRSDDESC

This function returns the account segment name from the General Ledger segment codes table, given a segment number and code.

Syntax

FRSDDESC(segment number, segment code)

Arguments

Argument	Description
segment number	G/L segment number, from 1 to 10
segment code	G/L segment code

Examples

In the following examples, segment 1 is the department segment. The third example shows how to use the FR function to return the segment code for the current report.

Statement	Return Value
=FRSDDESC(1,"USEAST")	Eastern United States
=FRSDDESC(1,"SALES")	Sales Department
=FRSDDESC(1,FR("CurAcSegVal1"))	Sales Department

FRTRN

This function retrieves net amounts and net quantities from posted transactions for a specified period. It retrieves actual values and summary totals (by both account and transaction fields), and allows drill down to associated transactions.

FRTRN is similar to "FRAMT" (page 114), but FRTRN retrieves totals from transaction history, whereas FRAMT retrieves totals from account history.

Note: This function cannot retrieve budget or provisional amounts, calculate balances, or include rollup amounts or totals.

Syntax

FRTRN(field name, account reference, criteria, currency)

Note: FRTRN returns 0 if no transactions are retrieved from transaction history.

Arguments

Argument	Description
field name	<p>The name of a field from the General Ledger fiscal sets with an optional fiscal designator prefix and optional fiscal year suffix (separated from the field name with a period).</p> <p>The fiscal designator prefix can be:</p> <ul style="list-style-type: none"> • A. Actual amount • Q. Quantities • QA. Actual quantities <p>Note: If no prefix is supplied, the default report setting is used (actual).</p> <p>The fiscal year suffix can be:</p> <ul style="list-style-type: none"> • YYYY. A specific fiscal year, such as 2010 • Ln. <i>n</i> years ago relative to the current fiscal year; for example, L1 is last year, and L2 is 2 years ago • Nn. <i>n</i> years in the future relative to the current fiscal year; for

Argument	Description
	<p>example, N1 is next year, and N2 is the year after next</p> <p>Note: If no suffix is supplied, the current fiscal year is used.</p>
account reference	A string specifying a single account or a range of accounts. See "About Account Number References" (page 59).
criteria (<i>Optional</i>)	<p>An expression that imposes selection criteria on the accounts and on transaction fields, including account and transaction optional fields. The account reference and expression together determine the accounts and additional data that will be included in the calculation. See "About Selection Criteria for Filtering Accounts" (page 62).</p>
currency (<i>Optional</i>)	<p>A string containing the currency reference. A currency reference has the form "CCC.T," where CCC is a 3-character currency code (for example, CAD for Canadian dollars, or USD for US dollars), and T is the currency type.</p> <p>The currency type can be:</p> <ul style="list-style-type: none"> • S. Source currency • E. Equivalent source amount in the functional currency • F. Functional currency total (including functional equivalents of all source amounts) • R. Reporting currency total <ul style="list-style-type: none"> • If the currency code is functional, R includes reporting equivalents of all source amounts. • If the currency code is not functional, R provides equivalent amounts in the reporting currency. <p>Note: If no currency is supplied, functional (home) currency is used.</p>

Fiscal Set Field Names

Financial Reporter can retrieve the following net change fields.

Note: In the Reporter Code Suffix, *n* is a number that can refer to the fiscal period (from 1 to 13), or to the quarter (from 1 to 4).

Period net change

Field Description	Reporter Code Suffix	NET (net changes)
Current period	P	NETP ¹
Last period	LP	NETLP
nth period	nP	NETnP
n periods ago	nPA	NETnPA

Quarter net change

Field Description	Reporter Code Suffix	NET (net changes)
Current quarter (to end)	Q	NETQ
Current quarter to date	QTD	NETQTD
Last quarter	LQ	NETLQ
Last quarter to date	LQTD	NETLQTD
nth quarter	nQ	NETnQ
nth quarter to date ²	nQTD	NETnQTD
n quarters ago	nQA	NETnQA
n quarters ago to date ³	nQATD	NETnQATD

¹NETP, NETnP, NET4Q, NETPQ will also include adjustments from period 14 if the net is requested for the final period of the year. (NET works like BAL.)

²This code allows you to compare the current QTD to the QTD of a previous quarter by providing you with to-date figures relative to the current quarter. If you are now in period 2 of the current quarter, QTD will give you the first 2 periods of any previous quarter.

³nQATD lets you go up to four quarters ago. If you need to specify more, use nQATD.L1.

Field Description	Reporter Code Suffix	NET (net changes)
Preceding quarter (3 periods) ¹	PQ	NETPQ ²
Preceding quarter (n periods ago)	PQnPA	NETPQnPA

Half year net change

Field Description	Reporter Code Suffix	NET (net changes)
Current half year (to end)	S	NETS
Current half year to date	STD	NETSTD
Last half year	LS	NETLS
Last half year to date	LSTD	NETLSTD
nth half year	nS	NETnS
hth half year to date ³	nSTD	NETnSTD
n half years ago	nSA	NETnSA
n half years ago to date ⁴	nSATD	NETnSATD
Preceding half year (6 periods) ⁵	PS	NETPS
Preceding half year (n periods ago)	PSnPA	NETPSnPA

¹PQ handles any three periods, providing you with revolving quarters. The preceding 3 periods include the current period plus the two previous ones.

²The NET for a group of periods that crosses a year-end boundary will also include the adjustments in period 14, but not include the closing entry; otherwise, the net would include the zeroing entries in income and expense accounts.

³This code allows you to compare the current half year TD to the half year TD of a previous half year by providing you with to-date figures relative to the current half year. If you are now in period 2 of the current half year, half year TD will give you the first 2 periods of any previous half year.

⁴nSATD lets you go up to 2 half years ago. If you need to specify more, use nSATD.L1.

⁵PS handles any six periods, providing you with revolving half years. The preceding six periods includes the current period plus the five previous ones.

Total year net change

Field Description	Reporter Code Suffix	NET (net changes)
Total year	Y	NETY
Year to date	YTD	NETYTD
Preceding year (12 or 13 periods)	PY	NETPY
Preceding year (n periods ago)	PYnPA	NETPYnPA
Beginning of year	OPEN	
End of year ¹	CLOSE	NETCLOSE
Period 14 adjustments	ADJ	NETADJ ²

Note:

- You can print year-end adjustments and transactions to close income accounts to retained earnings with NETADJ, and print closing figures with NETCLOSE and BALCLOSE.
- All fiscal field set values are calculated relative to the fiscal period set for the report, with the exception of NETADJ, and NETCLOSE, and fields that reference a specific time period.
 - NETADJ is the amount posted to the adjustment period.
 - NETCLOSE is the amount posted to the closing period.
- If there are no records for a future period, zero is returned.
- You can use a fiscal set prefix with NET to return specific values. For example:
 - NETP provides the net amount for the current fiscal period.
 - ANETP provides the actual net change for the current fiscal period.

¹NETCLOSE provides the closing entry only.

²NETADJ provides the amount from period 14.

Examples

Statement	Return Value
=FRTRN("NETLQ","1000")	Net transactions for the last quarter for account 1000
=FRTRN("NET#P","1000")	Net transactions for inquired period for account 1000
=FRTRN ("NETQTD","1000")	Net transactions for the quarter to date for account 1000

FRTRNA

This function retrieves net amounts and net quantities from posted transactions for the period that you specify. It retrieves actual values and summary totals (by both account and transaction fields), and allows drill down to associated transactions.

Like "FRAMTA" (page 121), it displays debit amounts as positive numbers and credit amounts as negative numbers.

Note: FRTRNA does not calculate balances, and does not include provisionally posted transactions.

Syntax

FRTRNA(field name, account reference, criteria, currency)

Arguments

Argument	Description
field name	<p>The name of a field from the General Ledger fiscal sets with an optional fiscal designator prefix and optional fiscal year suffix (separated from the field name with a period).</p> <p>The fiscal designator prefix can be:</p> <ul style="list-style-type: none"> • A. Actual amount • Q. Quantities • QA. Actual quantities <p>Note: If no prefix is supplied, the default report setting is used (actual).</p> <p>The fiscal year suffix can be:</p> <ul style="list-style-type: none"> • YYYY. A specific fiscal year, such as 2010 • Ln. <i>n</i> years ago relative to the current fiscal year; for example, L1 is last year, and L2 is 2 years ago • Nn. <i>n</i> years in the future relative to the current fiscal year; for example, N1 is next year, and N2 is the year after next <p>Note: If no suffix is supplied, the current fiscal year is used.</p>
account	A string specifying a single account or a range of accounts. See "About

Argument	Description
reference	Account Number References" (page 59).
criteria (Optional)	An expression that imposes selection criteria on the accounts and on transaction fields, including account and transaction optional fields. The account reference and expression together determine the accounts and additional data that will be included in the calculation. See "About Selection Criteria for Filtering Accounts" (page 62).
currency (Optional)	<p>A string containing the currency reference. A currency reference has the form "CCC.T," where CCC is a 3-character currency code (for example, CAD for Canadian dollars, or USD for US dollars), and T is the currency type.</p> <p>The currency type can be:</p> <ul style="list-style-type: none"> • S. Source currency • E. Equivalent source amount in the functional currency • F. Functional currency total (including functional equivalents of all source amounts) • R. Reporting currency total <ul style="list-style-type: none"> • If the currency code is functional, R includes reporting equivalents of all source amounts. • If the currency code is not functional, R provides equivalent amounts in the reporting currency. <p>Note: If no currency is supplied, functional (home) currency is used.</p>

Fiscal Set Field Names

Financial Reporter can retrieve the following net change fields.

Note: In the Reporter Code Suffix, *n* is a number that can refer to the fiscal period (from 1 to 13), or to the quarter (from 1 to 4).

Period net change

Field Description	Reporter Code Suffix	NET (net changes)
Current period	P	NETP ¹
Last period	LP	NETLP
nth period	nP	NETnP
n periods ago	nPA	NETnPA

Quarter net change

Field Description	Reporter Code Suffix	NET (net changes)
Current quarter (to end)	Q	NETQ
Current quarter to date	QTD	NETQTD
Last quarter	LQ	NETLQ
Last quarter to date	LQTD	NETLQTD
nth quarter	nQ	NETnQ
nth quarter to date ²	nQTD	NETnQTD
n quarters ago	nQA	NETnQA
n quarters ago to date ³	nQATD	NETnQATD

¹NETP, NETnP, NET4Q, NETPQ will also include adjustments from period 14 if the net is requested for the final period of the year. (NET works like BAL.)

²This code allows you to compare the current QTD to the QTD of a previous quarter by providing you with to-date figures relative to the current quarter. If you are now in period 2 of the current quarter, QTD will give you the first 2 periods of any previous quarter.

³nQATD lets you go up to four quarters ago. If you need to specify more, use nQATD.L1.

Field Description	Reporter Code Suffix	NET (net changes)
Preceding quarter (3 periods) ¹	PQ	NETPQ ²
Preceding quarter (n periods ago)	PQnPA	NETPQnPA

Half year net change

Field Description	Reporter Code Suffix	NET (net changes)
Current half year (to end)	S	NETS
Current half year to date	STD	NETSTD
Last half year	LS	NETLS
Last half year to date	LSTD	NETLSTD
nth half year	nS	NETnS
hth half year to date ³	nSTD	NETnSTD
n half years ago	nSA	NETnSA
n half years ago to date ⁴	nSATD	NETnSATD
Preceding half year (6 periods) ⁵	PS	NETPS
Preceding half year (n periods ago)	PSnPA	NETPSnPA

¹PQ handles any three periods, providing you with revolving quarters. The preceding 3 periods include the current period plus the two previous ones.

²The NET for a group of periods that crosses a year-end boundary will also include the adjustments in period 14, but not include the closing entry; otherwise, the net would include the zeroing entries in income and expense accounts.

³This code allows you to compare the current half year TD to the half year TD of a previous half year by providing you with to-date figures relative to the current half year. If you are now in period 2 of the current half year, half year TD will give you the first 2 periods of any previous half year.

⁴nSATD lets you go up to 2 half years ago. If you need to specify more, use nSATD.L1.

⁵PS handles any six periods, providing you with revolving half years. The preceding six periods includes the current period plus the five previous ones.

Total year net change

Field Description	Reporter Code Suffix	NET (net changes)
Total year	Y	NETY
Year to date	YTD	NETYTD
Preceding year (12 or 13 periods)	PY	NETPY
Preceding year (n periods ago)	PYnPA	NETPYnPA
Beginning of year	OPEN	
End of year ¹	CLOSE	NETCLOSE
Period 14 adjustments	ADJ	NETADJ ²

Note:

- You can print year-end adjustments and transactions to close income accounts to retained earnings with NETADJ, and print closing figures with NETCLOSE and BALCLOSE.
- All fiscal field set values are calculated relative to the fiscal period set for the report, with the exception of NETADJ, and NETCLOSE, and fields that reference a specific time period.
 - NETADJ is the amount posted to the adjustment period.
 - NETCLOSE is the amount posted to the closing period.
- If there are no records for a future period, zero is returned.
- You can use a fiscal set prefix with NET to return specific values. For example:
 - NETP provides the net amount for the current fiscal period.
 - ANETP provides the actual net change for the current fiscal period.

¹NETCLOSE provides the closing entry only.

²NETADJ provides the amount from period 14.

FRTRNCR

This function is similar to "FRCREDIT" (page 128), and retrieves net totals (credit amounts only) from transactions. It retrieves actual values and summary totals (by both account and transaction fields), and allows drill down to associated transactions.

Note: This function cannot retrieve budget or provisional amounts, calculate balances, or include rollup amounts or totals.

Syntax

FRTRNCR(field name, account reference, criteria, currency)

Tip: Use the criteria argument to restrict this function to credit (CR) transactions.

Arguments

Argument	Description
field name	<p>The name of a field from the General Ledger fiscal sets with an optional fiscal designator prefix and optional fiscal year suffix (separated from the field name with a period).</p> <p>The fiscal designator prefix can be:</p> <ul style="list-style-type: none"> • A. Actual amount • Q. Quantities • QA. Actual quantities <p>Note: If no prefix is supplied, the default report setting is used (actual).</p> <p>The fiscal year suffix can be:</p> <ul style="list-style-type: none"> • YYYY. A specific fiscal year, such as 2010 • Ln. <i>n</i> years ago relative to the current fiscal year; for example, L1 is last year, and L2 is 2 years ago • Nn. <i>n</i> years in the future relative to the current fiscal year; for example, N1 is next year, and N2 is the year after next <p>Note: If no suffix is supplied, the current fiscal year is used.</p>

Argument	Description
account reference	A string specifying a single account or a range of accounts. See "About Account Number References" (page 59).
criteria (Optional)	An expression that imposes selection criteria on the accounts and on transaction fields, including account and transaction optional fields. The account reference and expression together determine the accounts and additional data that will be included in the calculation. See "About Selection Criteria for Filtering Accounts" (page 62).
currency (Optional)	<p>A string containing the currency reference. A currency reference has the form "CCC.T," where CCC is a 3-character currency code (for example, CAD for Canadian dollars, or USD for US dollars), and T is the currency type.</p> <p>The currency type can be:</p> <ul style="list-style-type: none"> • S. Source currency • E. Equivalent source amount in the functional currency • F. Functional currency total (including functional equivalents of all source amounts) • R. Reporting currency total <ul style="list-style-type: none"> • If the currency code is functional, R includes reporting equivalents of all source amounts. • If the currency code is not functional, R provides equivalent amounts in the reporting currency. <p>Note: If no currency is supplied, functional (home) currency is used.</p>

Fiscal Set Field Names

Financial Reporter can retrieve the following net change fields.

Note: In the Reporter Code Suffix, *n* is a number that can refer to the fiscal period (from 1 to 13), or to the quarter (from 1 to 4).

Period net change

Field Description	Reporter Code Suffix	NET (net changes)
Current period	P	NETP ¹
Last period	LP	NETLP
nth period	nP	NETnP
n periods ago	nPA	NETnPA

Quarter net change

Field Description	Reporter Code Suffix	NET (net changes)
Current quarter (to end)	Q	NETQ
Current quarter to date	QTD	NETQTD
Last quarter	LQ	NETLQ
Last quarter to date	LQTD	NETLQTD
nth quarter	nQ	NETnQ
nth quarter to date ²	nQTD	NETnQTD
n quarters ago	nQA	NETnQA
n quarters ago to date ³	nQATD	NETnQATD

¹NETP, NETnP, NET4Q, NETPQ will also include adjustments from period 14 if the net is requested for the final period of the year. (NET works like BAL.)

²This code allows you to compare the current QTD to the QTD of a previous quarter by providing you with to-date figures relative to the current quarter. If you are now in period 2 of the current quarter, QTD will give you the first 2 periods of any previous quarter.

³nQATD lets you go up to four quarters ago. If you need to specify more, use nQATD.L1.

Field Description	Reporter Code Suffix	NET (net changes)
Preceding quarter (3 periods) ¹	PQ	NETPQ ²
Preceding quarter (n periods ago)	PQnPA	NETPQnPA

Half year net change

Field Description	Reporter Code Suffix	NET (net changes)
Current half year (to end)	S	NETS
Current half year to date	STD	NETSTD
Last half year	LS	NETLS
Last half year to date	LSTD	NETLSTD
nth half year	nS	NETnS
hth half year to date ³	nSTD	NETnSTD
n half years ago	nSA	NETnSA
n half years ago to date ⁴	nSATD	NETnSATD
Preceding half year (6 periods) ⁵	PS	NETPS
Preceding half year (n periods ago)	PSnPA	NETPSnPA

¹PQ handles any three periods, providing you with revolving quarters. The preceding 3 periods include the current period plus the two previous ones.

²The NET for a group of periods that crosses a year-end boundary will also include the adjustments in period 14, but not include the closing entry; otherwise, the net would include the zeroing entries in income and expense accounts.

³This code allows you to compare the current half year TD to the half year TD of a previous half year by providing you with to-date figures relative to the current half year. If you are now in period 2 of the current half year, half year TD will give you the first 2 periods of any previous half year.

⁴nSATD lets you go up to 2 half years ago. If you need to specify more, use nSATD.L1.

⁵PS handles any six periods, providing you with revolving half years. The preceding six periods includes the current period plus the five previous ones.

Total year net change

Field Description	Reporter Code Suffix	NET (net changes)
Total year	Y	NETY
Year to date	YTD	NETYTD
Preceding year (12 or 13 periods)	PY	NETPY
Preceding year (n periods ago)	PYnPA	NETPYnPA
Beginning of year	OPEN	
End of year ¹	CLOSE	NETCLOSE
Period 14 adjustments	ADJ	NETADJ ²

Note:

- You can print year-end adjustments and transactions to close income accounts to retained earnings with NETADJ, and print closing figures with NETCLOSE and BALCLOSE.
- All fiscal field set values are calculated relative to the fiscal period set for the report, with the exception of NETADJ, and NETCLOSE, and fields that reference a specific time period.
 - NETADJ is the amount posted to the adjustment period.
 - NETCLOSE is the amount posted to the closing period.
- If there are no records for a future period, zero is returned.
- You can use a fiscal set prefix with NET to return specific values. For example:
 - NETP provides the net amount for the current fiscal period.
 - ANETP provides the actual net change for the current fiscal period.

¹NETCLOSE provides the closing entry only.

²NETADJ provides the amount from period 14.

FRTRNDR

This function is similar to "FRDEBIT" (page 135), and retrieves net totals (debit amounts only) from transactions. It retrieves actual values and summary totals (by both account and transaction fields), and allows drill down to associated transactions.

Note: This function cannot retrieve budget or provisional amounts, calculate balances, or include rollup amounts or totals.

Syntax

FRTRNDR(field name, account reference, criteria, currency)

Tip: Use the criteria argument to restrict this function to debit (DR) transactions.

Arguments

Argument	Description
field name	<p>The name of a field from the General Ledger fiscal sets with an optional fiscal designator prefix and optional fiscal year suffix (separated from the field name with a period).</p> <p>The fiscal designator prefix can be:</p> <ul style="list-style-type: none"> • A. Actual amount • Q. Quantities • QA. Actual quantities <p>Note: If no prefix is supplied, the default report setting is used (actual).</p> <p>The fiscal year suffix can be:</p> <ul style="list-style-type: none"> • YYYY. A specific fiscal year, such as 2010 • Ln. <i>n</i> years ago relative to the current fiscal year; for example, L1 is last year, and L2 is 2 years ago • Nn. <i>n</i> years in the future relative to the current fiscal year; for example, N1 is next year, and N2 is the year after next <p>Note: If no suffix is supplied, the current fiscal year is used.</p>

Argument	Description
account reference	A string specifying a single account or a range of accounts. See "About Account Number References" (page 59).
criteria (<i>Optional</i>)	An expression that imposes selection criteria on the accounts and on transaction fields, including account and transaction optional fields. The account reference and expression together determine the accounts and additional data that will be included in the calculation. See "About Selection Criteria for Filtering Accounts" (page 62).
currency (<i>Optional</i>)	<p>A string containing the currency reference. A currency reference has the form "CCC.T," where CCC is a 3-character currency code (for example, CAD for Canadian dollars, or USD for US dollars), and T is the currency type.</p> <p>The currency type can be:</p> <ul style="list-style-type: none"> • S. Source currency • E. Equivalent source amount in the functional currency • F. Functional currency total (including functional equivalents of all source amounts) • R. Reporting currency total <ul style="list-style-type: none"> • If the currency code is functional, R includes reporting equivalents of all source amounts. • If the currency code is not functional, R provides equivalent amounts in the reporting currency. <p>Note: If no currency is supplied, functional (home) currency is used.</p>

Fiscal Set Field Names

Financial Reporter can retrieve the following net change fields.

Note: In the Reporter Code Suffix, *n* is a number that can refer to the fiscal period (from 1 to 13), or to the quarter (from 1 to 4).

Period net change

Field Description	Reporter Code Suffix	NET (net changes)
Current period	P	NETP ¹
Last period	LP	NETLP
nth period	nP	NETnP
n periods ago	nPA	NETnPA

Quarter net change

Field Description	Reporter Code Suffix	NET (net changes)
Current quarter (to end)	Q	NETQ
Current quarter to date	QTD	NETQTD
Last quarter	LQ	NETLQ
Last quarter to date	LQTD	NETLQTD
nth quarter	nQ	NETnQ
nth quarter to date ²	nQTD	NETnQTD
n quarters ago	nQA	NETnQA
n quarters ago to date ³	nQATD	NETnQATD

¹NETP, NETnP, NET4Q, NETPQ will also include adjustments from period 14 if the net is requested for the final period of the year. (NET works like BAL.)

²This code allows you to compare the current QTD to the QTD of a previous quarter by providing you with to-date figures relative to the current quarter. If you are now in period 2 of the current quarter, QTD will give you the first 2 periods of any previous quarter.

³nQATD lets you go up to four quarters ago. If you need to specify more, use nQATD.L1.

Field Description	Reporter Code Suffix	NET (net changes)
Preceding quarter (3 periods) ¹	PQ	NETPQ ²
Preceding quarter (n periods ago)	PQnPA	NETPQnPA

Half year net change

Field Description	Reporter Code Suffix	NET (net changes)
Current half year (to end)	S	NETS
Current half year to date	STD	NETSTD
Last half year	LS	NETLS
Last half year to date	LSTD	NETLSTD
nth half year	nS	NETnS
hth half year to date ³	nSTD	NETnSTD
n half years ago	nSA	NETnSA
n half years ago to date ⁴	nSATD	NETnSATD
Preceding half year (6 periods) ⁵	PS	NETPS
Preceding half year (n periods ago)	PSnPA	NETPSnPA

¹PQ handles any three periods, providing you with revolving quarters. The preceding 3 periods include the current period plus the two previous ones.

²The NET for a group of periods that crosses a year-end boundary will also include the adjustments in period 14, but not include the closing entry; otherwise, the net would include the zeroing entries in income and expense accounts.

³This code allows you to compare the current half year TD to the half year TD of a previous half year by providing you with to-date figures relative to the current half year. If you are now in period 2 of the current half year, half year TD will give you the first 2 periods of any previous half year.

⁴nSATD lets you go up to 2 half years ago. If you need to specify more, use nSATD.L1.

⁵PS handles any six periods, providing you with revolving half years. The preceding six periods includes the current period plus the five previous ones.

Total year net change

Field Description	Reporter Code Suffix	NET (net changes)
Total year	Y	NETY
Year to date	YTD	NETYTD
Preceding year (12 or 13 periods)	PY	NETPY
Preceding year (n periods ago)	PYnPA	NETPYnPA
Beginning of year	OPEN	
End of year ¹	CLOSE	NETCLOSE
Period 14 adjustments	ADJ	NETADJ ²

Note:

- You can print year-end adjustments and transactions to close income accounts to retained earnings with NETADJ, and print closing figures with NETCLOSE and BALCLOSE.
- All fiscal field set values are calculated relative to the fiscal period set for the report, with the exception of NETADJ, and NETCLOSE, and fields that reference a specific time period.
 - NETADJ is the amount posted to the adjustment period.
 - NETCLOSE is the amount posted to the closing period.
- If there are no records for a future period, zero is returned.
- You can use a fiscal set prefix with NET to return specific values. For example:
 - NETP provides the net amount for the current fiscal period.
 - ANETP provides the actual net change for the current fiscal period.

¹NETCLOSE provides the closing entry only.

²NETADJ provides the amount from period 14.

Appendix E: FR Field Reference

Use selection criteria expressions with account master fields and account optional fields (defined in G/L Setup), and with transaction fields and transaction optional fields (defined using FRPOST).

Account Master Fields

You can use a selection criteria expression with any of the fields in the general ledger account master (listed below).

Many values can be expressed in more than one way. For example, the quantity switch can be 1 or "Yes" if the account keeps quantities, or 0 or "No" if it does not. A criteria expression for this field can look like either of the following:

- `QTYSW = 1`
- `QTYSW = "Yes"`

FR Paste always supplies the text value of G/L account master fields ("Yes" in the above example). If you want to see the non-text values and the text values of these fields, see the Object Information for the GLACCOUNT view in the Macro Editor.

Note: If a field's value is text, you must enclose field values in quotation marks. If the text contains a space, it is best to enclose values in a second set of quotation marks: `ACCTDESC = "Accounts Receivable%"`.

To retrieve account optional fields, add the prefix `A.` before a field name (for example, `A.ACCTID`). Be sure to include the period after the prefix.

The following table shows G/L account data field names:

Name	Field Contents
ACCTID	Account number, including all segments.
CREATEDATE	Date the account was created. Dates are specified as "yyyymmdd".
ACCTDESC	Account description.

Name	Field Contents
ACCTTYPE	Account type I, B or R for income statement, balance sheet, or retained earnings account.
ACCTBAL	1 for normal debit; 2 for normal credit.
ACTIVESW	"ACTIVE" or "INACTIVE".
CONSLDSW	"Do not consolidate journals" or 0 if transactions are not consolidated; "Consolidate journals" or 1 if transactions are consolidated on posting
QYTSW	"Yes" or 1 if quantities are used with account; "No" or 0 if not.
UOM	The unit of measure if quantities are used.
ALLOCSW	If account can be reallocated: "Yes" or 1 is yes; "No" or 0 is no.
ACCTOFSET	Account number for reallocation.
ACCTSRTV	Allocation transaction source code.
MCSW	Multicurrency switch: "Yes" or 1 is yes; "No" or 0 is no.
SPECSW	If posting is in all or specific source currencies. "All currency" or 1 is all; "Specific currency" or 0 is specified.
ACCTGRPCOD	Account group code.
CTRLACCTSW	If account is a control account. "Control account" or 1 is yes; "Non control account" or 0 is no.
SRCELDGID	Source ledger if control account (e.g. AR, AP). (Reserved field)
ALLOCTOT	Total of different allocation rates (100).
ABRKID	Account structure code.
YRACCTCLOS	Year of the last close.
POSTOSEGID	The account segment by which the account is closed.
DEFCURNCOD	Default currency code for the account.
ACCTFMTTD	Formatted account number.
ACSEGVAln	Account segment value 01 to 10.

Name	Field Contents
ACCTSEGVAL	Account Segment Code
ACCTGRPCPY	Account group COPY. A copy of the group code that is a string instead of an integer.
ROLLUPSW	Rollup switch. If unformatted, 1 if account is a rollup account, 0 if not. If formatted, "Yes" or "No".

Transaction Fields

Transaction fields include account master fields and account optional fields defined in G/L Setup, and the following transaction fields and transaction optional fields defined in FRPOST.

To retrieve account optional fields, add the prefix **A.** before a field name (for example, **A.ACCTID**). To retrieve transaction optional fields, add the prefix **T.** before the field name (for example, **T.QTY**). Be sure to include the period after these prefixes.

For more information, see "Account Master Fields" (page 171) and "FRPOST" (page 144).

Name	Contents of the Field
FISCALYR	Fiscal Year
FISCALPERD	Fiscal Period
SRCECURN	Source Currency Code
SRCELEDGER	Source Ledger Code
SRCETYPE	Source Type
POSTINGSEQ	Posting Sequence Number
CNTDETAIL	Detail Count
JRNLDATE	Journal Date
BATCHNBR	Batch Number
ENTRYNBR	Journal Entry Number
TRANSNBR	Journal Transaction Number

Name	Contents of the Field
CONSOLIDAT	Consolidation in Posting
JUNLDTLDESC	Journal Detail Description
JNLDTLREF	Journal Detail Reference
TRANSAMT	Journal Transaction Amount
TRANSQTY	Journal Transaction Quantity
SCURNAMT	Journal Source Amount
RPTAMT	Journal Reporting Amount
RATETYPE	Date of Currency Rate Selected
DATEDATE	Date of Currency Rate
CONVRATE	Currency Rate for Conversion
RATEOPER	Currency Rate Operator

Appendix F: FAQ and Troubleshooting

How Do I...

Create an FR report with drilldown that doesn't show the FR code

If multiple users are viewing financial reports, and the report specifications are not to be edited, you use the G/L Print Financial Statements screen to print the report, and select the DrillDown Information option on that screen to include drilldown information in the report.

Enlarge the Spec range

In some reports, you might find that information is cut off the report because it extends beyond the right edge of the spreadsheet print area. You can correct this by adjusting column width, or by redefining the Spec range.

For more information about working with Spec ranges, see "About the Spec Range" (page 71).

Exclude accounts from a range in FR

You can specify selection criteria on a default specification line, on individual specification lines, and in formulas.

With all these possibilities for account selection, you must be very clear which criteria are actually in effect.

For more information about the rules that apply when specifying criteria, see "About Generating Reports from Specifications" (page 28) and "About Selection Criteria for Filtering Accounts" (page 62).

Generate reports from specifications

For information about generating financial statements, see "About Generating Reports from Specifications" (page 28).

Turn off comments when Drilldown is selected

If you select the **Drilldown Information** option when generating a report, every cell with drilldown displays a comment "Right-click and choose FR..." If the spreadsheet has many columns, this can fill the spreadsheet.

To collapse comments so that only a content indicator appears:

1. Click **File > Options**.
2. In the Excel Options window, click the **Advanced** tab.
3. In the **Display** group, select the **Indicators only, and comments on hover** option.
4. Click **OK**.

Print recurring column headings at the top of each page when the report has multiple pages

When a report has multiple pages, you can use title lines to print recurring column headings at the top of each page. For more information, see "Printing a Financial Statement" (page 79).

Set grid lines and tab breaks

You set all formatting for financial reports using the formatting commands in the Financial Statement Designer. For more information, see "About Formatting Financial Statements" (page 68).

Set the Spec range

Before you can generate and print a financial report from a report specification, you must define the Spec range, which is a named range of cells in the spreadsheet. For more information, see "About the Spec Range" (page 71) and "Setting the Spec Range" (page 73).

Troubleshooting

I'm getting error messages

For a list of Financial error messages and descriptions, see "Financial Reporter Error Messages" (page 178).

Nothing happens when I click OK on the Financial Statement Generator

If nothing happens when you run FR View, check whether you have defined a spec range. For more information, see "About the Spec Range" (page 71) and "Setting the Spec Range" (page 73).

I can't view some account descriptions in financial reports

If some account descriptions are not appearing in financial reports, check to see if the individual account descriptions have any common description for

accounts that are being consolidated in the report. To include these account descriptions in a printed report, you may need to edit the descriptions.

Example:

Account number 6200-100 and 6200-200 are being consolidated into account 6200.

If the descriptions are as follows:

- 6200: "office expense total"
- 6200-100: "office expense Richmond"
- 6200-200: "office expense Toronto"

... the description on the printed financial report will be "office expense", which is the common name for all three accounts.

If account 6200 used the description "miscellaneous account" instead, the description would be blank in the financial report (there are no common elements in the three descriptions).

The report date appears in short date format even when Excel cell format is set to long date

If you have changed cell format in Excel to display long date formats, but Financial Reporter still displays dates in short format, you can use the following Excel DATEVALUE formula to change the format:

```
=DATEVALUE (FR ("SessionDate"))
```

The bottom of the report is missing when printed

If some data is missing from the bottom of a report when printing, you may need to change the size of the report as follows:

1. On the **Formulas** tab of the Excel ribbon, click **Define Name**.
2. In the **Name** field, select **Spec**.
3. In the **Refers to** field, type `=Sheet1!$`.
4. Click **OK**.

For more information, see "About the Spec Range" (page 71) and "Setting the Spec Range" (page 73).

Financial Reporter Error Messages

Financial Reporter error messages fall into two general categories:

- **Error messages printed on financial statements.** These messages report problems in formulas and report specifications, such as an account reference with too many account code segments. If Financial Reporter encounters a problem when generating a financial statement, it inserts a message in the report, and then continues to generate (and print) the rest of the statement.
- **Error messages displayed by Financial Reporter.** These messages appear when you attempt to open Financial Reporter screens, or when report generation is canceled, and may appear under the following conditions:
 - If Sage 300 ERP cannot start Microsoft Excel.
 - If the computer runs out of memory (RAM).
 - If Financial Reporter cannot continue to generate the report. (For example, this may happen if the text or formula in a specification cell is too long.)

The following tables describe these error messages and possible solutions.

Error Messages Printed on Financial Statements

Error Messages Printed on Financial Statements

Message	Description
"Invalid account reference in cell. <cell location L> : <cell value V>"	The account reference you entered in column A is incorrect because it does not match the requirements for column A cells.
"Invalid selection criteria in cell. <cell location L> : <cell value V>"	You entered an incorrect selection criteria in this cell. Follow the criteria in column B to refine the account selection (for example, a filter that restricts the range of accounts to a particular account group, account type, or account name).
"Invalid zero-suppression formula in cell. <cell location L> : <cell value V>"	You entered an incorrect definition for a zero-suppression formula in this cell. Follow the criteria in column C to determine which lines are to be excluded.

Message	Description
"Invalid detail level in cell. <cell location L> : <cell value V>"	You entered an incorrect consolidation switch in this cell. Follow the criteria in column D for consolidating account ranges.
"Invalid formula or expression in cell. <cell location L> : <cell value V>"	This is a general message indicating that a formula or expression at the stated cell location cannot be interrupted by FR in generation.
Invalid specification line type in cell. <cell location L> : <cell value V>	Invalid spec line definition at cell location L with value V (not a comment line, or valid default line, or body line).
"FR cannot further generate any line for the worksheet."	Generated lines are almost over spreadsheet limit. Report generation has been stopped.
"Invalid consolidation of posted transactions on specification in row <Row R>. Consolidated details cannot be generated using the combination of detail level and sorting order."	The specified consolidation method for posted transactions on the spec lines in row R must match with a specific sorting order.

For more information, see "About Columns in Report Specifications" (page 39).

Error Messages when Starting G/L Statement Designer or Running Print Financial Statements

Error Messages when Starting G/L Statement Designer or Running Print Financial Statements

Message	Description
"Error in creating Excel object."	Make sure Microsoft Excel is installed.
"Page Break Preview is not available in Print Financial Statements (GL9100). Please go to Statement Designer (GL9200) to use this function."	The Print Financial Statements feature does not support Page Break Preview. Use the G/L Statement Designer instead.
"There are no printers installed. One is required when print destination is Printer or Preview."	You must install a printer before you can view output or choose a print destination.
"FileSystemObject object model cannot be initiated. Please make sure that Scripting type library is properly installed in Windows System."	Cannot find Microsoft Scripting Runtime Object - required when starting FR.

Error Messages when Starting Financial Reporter

Error Messages when Starting Financial Reporter

Message	Description
"cmdStart: <error message>"	<p>If you receive error messages that are in this format, you may need to reinstall Microsoft Excel, or General Ledger, or System Manager. After reinstalling, restart the system, and then check to see if the problem has been resolved.</p> <p>If the problem cannot be resolved by reinstalling these programs, contact your system administrator.</p> <p>Tip: Before reinstalling Microsoft Excel, confirm that Microsoft Office is installed correctly. From the Programs and Features screen of Windows' Control Panel, right-click Microsoft Office, and then click Change. Select the option to add or remove features, and then confirm that Visual Basic for Applications is installed as part of Office Shared Features.</p>
"Initializing FR Error (< error id>J): Failure in starting Statement Designer."	Failure to start Statement Designer.
"Initializing FR Error (<error id>): Failure in starting Print Financial Statements."	Failure to start Print Financial Statements.
"Internal error," "Insufficient memory," or "System error."	Write down the message, exit applications and Windows, restart your computer, and then try the task again.
"Incorrect procedure."	Most error messages pertaining to incorrect procedures arise when other tasks have locked the system or company database. Wait for the other task to complete, and then try again.

-

- (in statements) 59

%

% (in statements) 59

%% (in statements) 59

\ (in statements) 45

\\ (in statements) 45, 48, 52

_

_ (in statements) 59

|

| (in statements) 52, 59

~

~ (in statements) 52, 59

A

A (column in statements) 39, 69

account consolidation in statements 55

account data

 verifying 37

account master fields 171

account numbers in formulas 59, 61

account optional fields

 printing on FR reports 38

account ordering in statements 52, 59-61, 66

account processing in statements 52, 59-61, 66

account ranges

 in statements 52, 59, 66

 overriding 30

account references

 examples 101

 symbols 101

 syntax 101

account segment description in statements 149

account selection in statements 62, 64

account sorted group 59

account structures 60-61, 66

ACSEGVAln 52

adding rows to a financial report 18

amounts in statements 135

B

B (column in statements) 40

balance sheets

 about rounding on 34

balances in statements 114, 121, 128, 135

C

C (column in statements) 40
calculations in statements 44
cell formulas in statements 45, 51
column A in statements 39, 42, 69
column B in statements 40
column C in statements 40
column D in statements 40, 55
column specifications in statements 39, 44-45
 column A 39
 column B 40
 column C 40
 column D 40
 column E 42
 default information for 47
 sample defaults 48
column totals in statements 33
columns, hiding on statements 69
comments in statements 69
consolidating on FR reports
 account ranges 55
 account segments 41
 multiple statements 74
 optional field amounts 38
 transaction details 40
creating two-column financial reports 16
currency exchange rates 44
custom fields See optional fields

D

D (column in statements) 40, 55

dates in statements 142
default column specifications 45, 48
default lines
 overriding 30
design of statements 27
drilldown 31

E

error messages 178
Excel
 and the Statement Designer 3
 printing statements 3, 30
 setting up 30
expression syntax
 brackets 65
 LIKE 65
 optional fields 66
 quotation marks 65
 spaces 65

F

fields, retrieved in statements 114
 G/L account masters 171
filtering accounts in statements 62, 64
financial analysis reports 87, See also financial statements
financial report specification
 tutorial on creating 15
Financial Reporter
 overview 3, 30
 troubleshooting 175
 tutorial 7
Financial Reporter functions See FR

-
- Financial Reporter menu commands 93
 - FR Clear 93
 - FR Drilldown 93
 - FR Help 93
 - FR Options 93
 - FR Paste 94, 98
 - FR View 94
 - Financial Reporter screens
 - Print Financial Statements 81
 - Statement Designer 30
 - Financial Reporter spreadsheet
 - Excel 7
 - financial statements
 - accounts in 52, 59
 - columns in 39
 - consolidating 55, 74
 - formatting 68, 70
 - how to produce 7, 28
 - launching from Sage 300 ERP 7
 - printing 79, 81
 - selection criteria for 62, 66
 - Spec range 73
 - specifications for 27
 - Statement Designer 30
 - title lines 68
 - Fiscal Designator 97
 - fiscal period dates in statements 142
 - fiscal set field names in statements 114
 - footers in statements 70
 - forecasting 92
 - formatting financial statements
 - grid lines 69
 - page layout 70
 - formulas in statements
 - about using 59
 - overview 8, 12
 - FR Clear menu command 93
 - FR Drilldown menu command 93-94
 - FR error messages 178
 - FR functions 51, 59-61, 66, 105
 - criteria 64
 - FR 107
 - FRACCT 110
 - FRAMTA 121
 - compared with FRAMT 114
 - FRCREDIT 128
 - FRDEBIT 135
 - FRFISCAL 142
 - FRPOST 144
 - FRRATE 147
 - FRSDESC 149
 - FRTRN 150
 - FRTRNA 156
 - FRTRNCR 161
 - FRTRNDR 166
 - overview 105
 - text parameters 65
 - FR Help menu command 93
 - FR Options menu command 93
 - FR Paste menu command 94, 96-97
 - rolled up amounts 96
 - using 98
 - FR View menu command 31, 82, 84-85, 94
 - Frequently Asked Questions 175
 - functions (in FR statements) See FR Functions
-

G

G/L Print Financial Statements screen 81
grid lines 69

H

headers in statements 70
hiding rows and columns 69

I

Income Statement summaries 90
invalid account reference in cell 178
invalid detail level in cell 179
invalid formula or expression in cell 179
invalid selection criteria in cell 178
invalid specification line type in cell 179
invalid zero-suppression formula in
cell 178

L

line criteria, overriding in statements 28
long date formats 177

N

net amounts in statements 114, 121, 128,
135

O

optional fields
 printing on FR reports 38
 retrieving for FR reports 38
ordering in statements 52, 59-61, 66

overriding account ranges 30
overriding default lines 30
overriding line criteria 30

P

page layout in statements 70
 headers and footers 70
 page breaks 70
 page numbers 71
pasting functions 98
period dates in statements 142
print destinations
 for Financial Reporter statements 83
Print Financial Statements screen
 using 79
printing
 consolidating optional field amounts on
 FR reports 38
 optional field values on FR reports 38
 ranges in statements 28, 73
 statements 31, 79, 82, 84-85
processing order in statements 52, 59-61,
66

R

ranges in statements 52, 59-61, 66
report columns 39
report generation 28
report range in statements 28, 73
report specifications 3
 account information 52, 55, 59, 66
 columns and rows 39, 69
 designing 27-28, 30, 51, 73

formatting 68, 70
functions used in 98, 105
sample 39, 48
selection criteria used in 62
tutorial on creating 7, 15
reports See also financial statements
 printing financial statements 81, 87
retrieving detail optional fields 144
retrieving net amounts and quantities 156
rounding on balance sheets 34
rows
 adding to a financial report 18
 hiding 69

S

sample report specification 39
segment description in statements 52, 149
selecting accounts in statements 62, 64
selection criteria expression 64
sort by account group 59
sorting 52, 59-61, 66
sorting order 41
spec range 73
 in statements 28, 73
 setting 73
specification files
 definition 8
specifying account numbers in
 statements 59-61, 66
standard account references 101
statement columns
 column A 39
 column B 40
 column C 40

 column D 40
 column E 42
statement footers 70
statement headers 70
statements 4, 31, 87
 financial 87
structure 60-61, 66
subtotals in statements 33
suppressing zero values 63
syntax for account selection criteria 64

T

testing information in statements 37
text parameters 65
title lines in financial statements 68
totals in statements 33
transaction details
 consolidating by 40
transaction fields 173
transaction optional Fields
 printing on FR reports 38
troubleshooting Financial Reporter 175

U

Use Budget Opening Balance 93
Use Quantity Opening Balance 93

V

verifying account data 37

W

what-if analyses 92

Z

Z in statements 63

zero suppression in statements 45, 63

 using Z and N 45