

S A G E 5 0 0 E R P 2 0 1 9

Release Notes

Version 8.00.3

Product Update 3

Sage Software, Inc.

Acknowledgments

Information in this document is furnished only under a Customer License Agreement or non-disclosure agreement, and may be used or copied only in accordance with the terms of such agreement. The software described in this document is protected by copyright, and may not be copied on any medium except as specifically authorized in the license or non-disclosure agreement.

This document is also protected by copyright, and may not be reproduced or transmitted, in whole or in part, by any means, including photocopying, facsimile transmission, or reduction to any electronic medium or machine-readable form, without the express written consent of Sage Software, Inc.

Copyright 2020 Sage Software, Inc.

All rights reserved.

Sage 500 ERP is a registered trademark of Sage Software, Inc. Other product names used in this document are trademarks or registered trademarks of their respective owners.

Contents

Disclaimer	4
Enhancements and Corrections	4
Enhancements	4
*Product Update 3	6
Product Update 2	7
Product Update 1	8
Installation Instructions	9
Installing the Server	9
Installing the Client	15

Disclaimer

Any prior customizations may be altered or overwritten upon installation of this product update. The user assumes all responsibility for corruption or loss of data.

Enhancements and Corrections

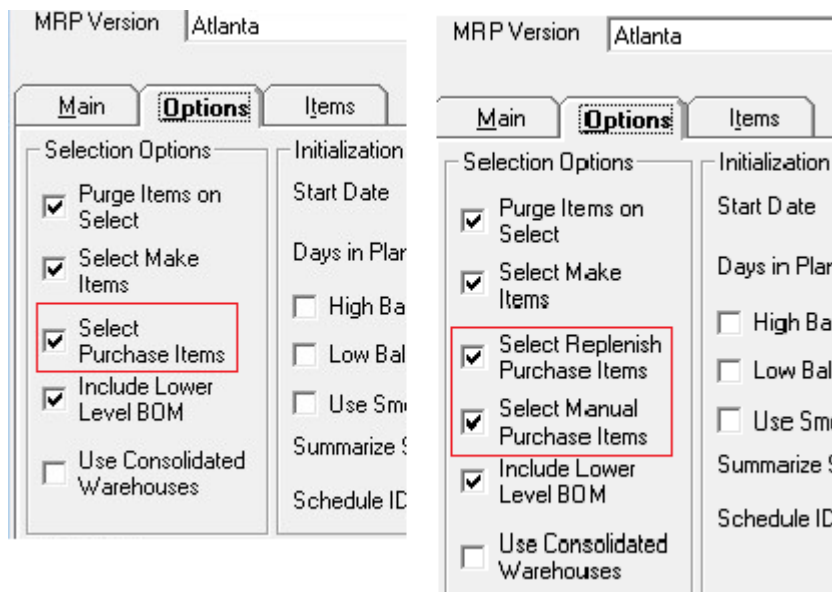
The following is a list of enhancements and corrections that have been incorporated into this Sage 500 ERP 2019 Product Update.

***Indicates a new enhancement or program fix in this Update. All new to Product Update 3 have been consolidated under one section "Product Update 3".**

Enhancements

Enhancement: This issue changes the "Material Requirements Planning Generation" form's "Options" tab "Selection Options" frame by replacing one existing checkbox with two checkboxes. Refer to Issue ID 50404 below.

Available: Product Update 1



MRP uses the inventory management module's replenishment system. The IM replenishment system does not process inventory items that have a reorder method of "Manual". MRP picks up such items in its processing. This led to a situation where MRP selection would pick up items for which it cannot generate actual orders. Depending upon your point of view, this could be considered good or bad. For those who do not wish to include items that cannot yield an actual order, this change allows a user to skip inventory items that are configured for manual replenishment, while still allowing the previous behavior.

By checking both checkboxes on the new version, you will get the same behavior as the previous version. Both checkboxes are checked by default. Should you choose to keep both checkboxes checked and the system detects that manual items are included in a planned order run, the system will now display a new warning message on the Messages tab of the MRP Requirements Planning Inquiry indicating the item must be manually replenished.

S Material Requirements Planning Inquiry

Item Summary Period Summary Transaction Detail Planned Orders **Messages**

View Messages With:

Severity: All Type: All Print Messages Clear Messages

Output: Printer

Severity	Message Type	
Notification	Selection	MRP Version: Mojo Selected: 2 No. Items: 1 No. Detail : 0
Notification	Initialization	MRP Version: Mojo Initiated: 2 No. Items: 1 No. Detail : 0
Notification	Initialization Completion	MRP Version: Mojo Completed: 2 No. Items: 1 No. Detail : 2
Warning	PO Plans	Planned Order 1899 is for Required amount. No replenishment configuration was found for item
Warning	PO Plans	Planned order 1899 for "Manual Item" in "Biallo" must be manually replenished. Planned order is shown for reference only.

The approach taken for this issue was to allow those who like the previous behavior to keep it, while allowing those who prefer to only process replenishment items that can generate an actual purchase order to skip manually replenished items.

*Product Update 3

Issue ID	Module	Short Description	Objects Modified - Client	Object Modified - Database
50481	DP	Error when trying to import Sales Order using Data Porter	DPZUA002.cls, sozdj101.frm, sozdj101.exe	Fix_DP_Metadata_For_SO_Entry_Item_Lookup.SQL
50479	DP	Dataporter only imports Quantity of 1	DPZUA002.cls, sozdj101.frm, sozdj101.exe	Fix_DP_Metadata_For_SO_Entry_Item_Lookup.SQL
50477	MultiModule	Doc Transmittal using SMTP with Require Credential and Use SSL fails with TLS 1.0 disabled	SMTPMailer.cs, EmailUtilFx.dll	
50469	FrmWrk	Doc Transmittal with Exchange when TLS 1.0 is disabled fails	ExchangeMailer.cs, EmailUtils.cs, EmailUtilFx.dll	
50468	CZ	Error in Export/Import Customizations	Trgen.dll, Soadblib.dll	
50466	IM	Inventory Distribution for Serialized items not sorting properly during Pick list		spimDistLoadAllAvailStockSerial.sql, spimExpandSerialNoFromRange.sql
50465	GL	Date in multiple Sage 500 VB forms is being transposed	GlzDed1.frm, GlzDFd1.frm, GlzRG001.bas, Glzded1.dll, Glzdfd1.dll, Glzrg001.exe	spcmLoadReconciliation.sql, spcmRefreshReconciliation.sql, spcmSingleSortReconciliation.sql
50454	PO	OrigPromiseDate is blank in Explore PO Line for copied Purchase Orders		sppoPushPull.sql
50450	SO	Print Shipping Labels is printing to Default Printer even when other printer is selected	clsRptEg.cls, sozred1.cls, sozre001.exe, sozred1.dll	
50448	AR	Lookup View for Credit Card of specific Customer shows all credit card instead of only the Credit Card of the specific customer	CCTransactions.Frm, cctransactions.dll	
50432	PO	Receipt of Goods Register prints to a Default Printer only	clsRpt.cls, ReportEngine.dll	

Product Update 2

Issue ID	Module	Short Description	Objects Modified - Client	Object Modified - Database
50439	AR	V2019 -Error 5 occurred at frmCustomerMaint in Procedure DMPostSave	SMTPMailer.cs, EmailUtilFx.dll	
50430	FrmW rk	In-product survey not used and should be disabled.	SurveyDialog.vb, Accounting.Framework.Pr oductSurvey.dll	
50441	IM	Print Suggested Orders prints every kit assembly		spimLineItem.sql
50444	MF	"Transaction Date cannot be less than the Original Date" in Production Entry Return	MFPProdEntryRet.frm, mfProdEntryRet.exe	
50432	PO	Receipt Of Goods Register prints to a Default Printer only	clsRpt.cls, ReportEngine.dll, ReportEngWithAdapter.dll	

Product Update 1

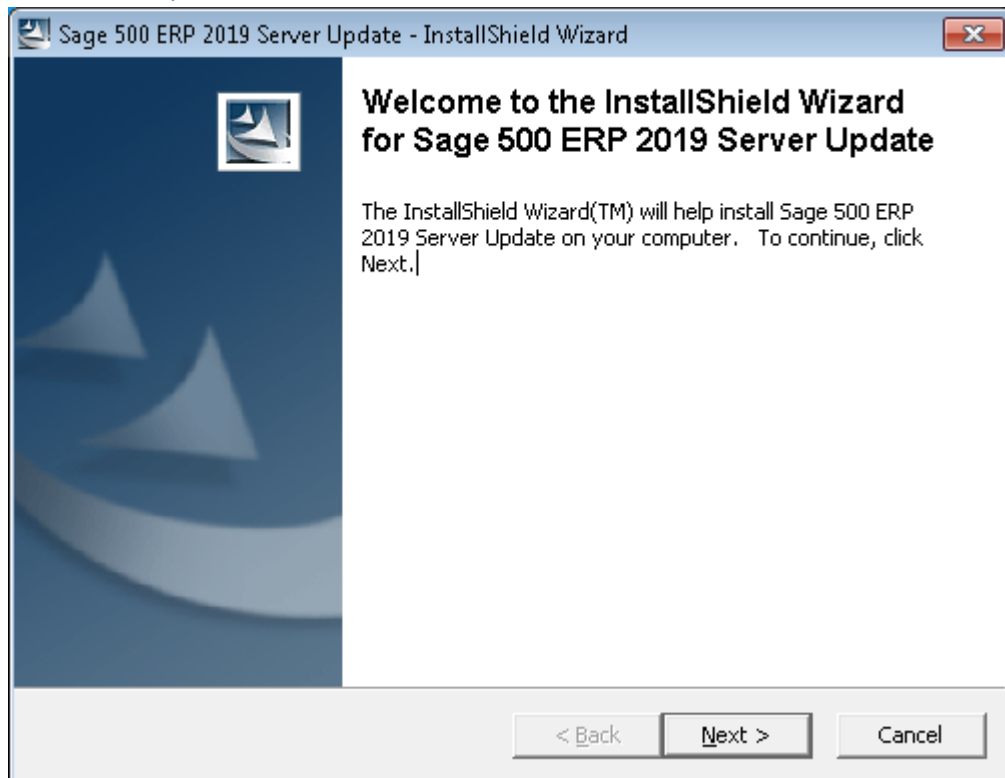
Issue ID	Module	Short Description	Objects Modified - Client	Object Modified - Database
50423	AP	V2019 PU1Print EFT Remittance transmittal does not email custom check form	apzra101.frm, apzra101.exe	
50407	AR	Unapplied Cash Receipts did not rollback after deleting to an applied Pending Invoice	arzda001.frm, ARZDADL1.dll,	50407_sparUpdCustPmtForDelPendInv.sql
50411	IM	Qty Available is incorrect in Stock Status when there is a Pending Receipt of Goods		50411_spdvStockStatus.sql, 50411_vdvStockStatus.sql
50404	MF	MRP is including items with 'Manual' reorder method	MFZRV001.bas, mfzrv001.frm, mfzrv001.frx, mfzrv001.exe	spmfMRPLogPlanError.sql, spmfMRPPlanCreateActuals.sql, spmfMRPCreatePlanPOOrder.sql, 50404_Upgrade_Script.sql
50397	MF	Work Order Maintenance not displaying Qty Total or Tot Quantity when quantity equal or greater than 10,000,000	mfzdb001.frm, mfzdb002.frm, mfzdb001.exe	
50419	MF	Efficiency % resets back to 100% for a Progress Step in Maintain Routing	mfzda001.frm, mfzda001.exe	
50414	SO	In Enter Sales Orders and Quotes, the map button for MapQuest is no longer working	MapButton.ctl, buttoncontrols.ocx	50414_New Local Strings.sql

Installation Instructions

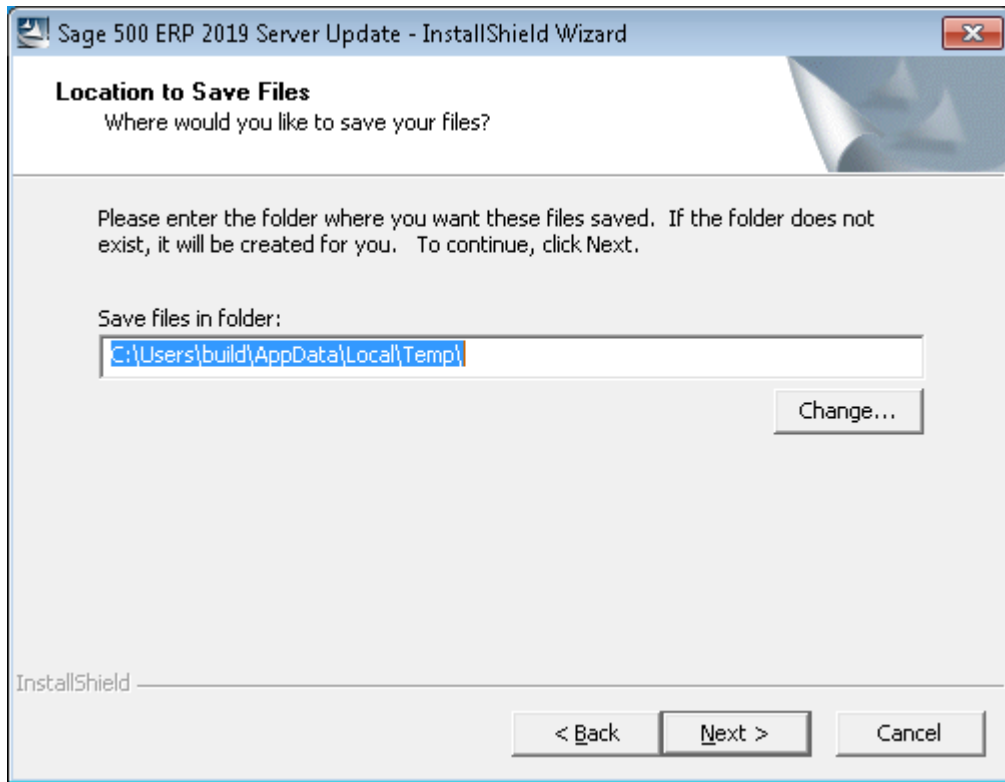
Installing the Server

Note: All users must log out of the Sage 500 ERP applications prior to installing the server update.

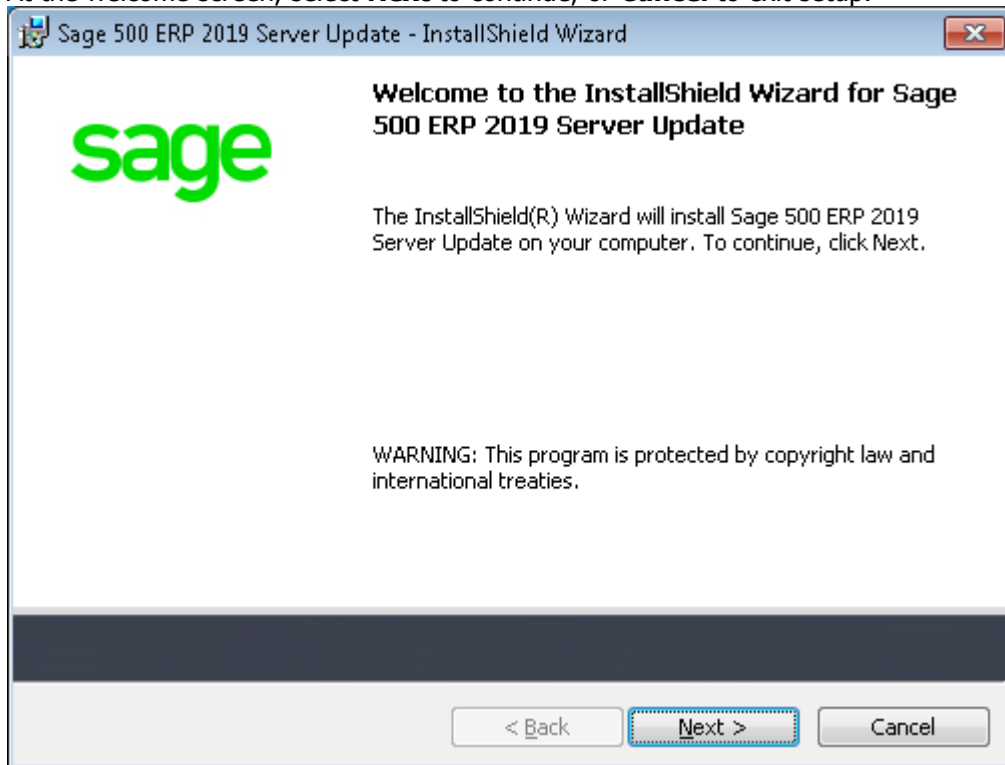
1. To begin the Sage 500 ERP 2019 Server installation, double-click **2019PU3S.exe** and click **Next** to proceed.



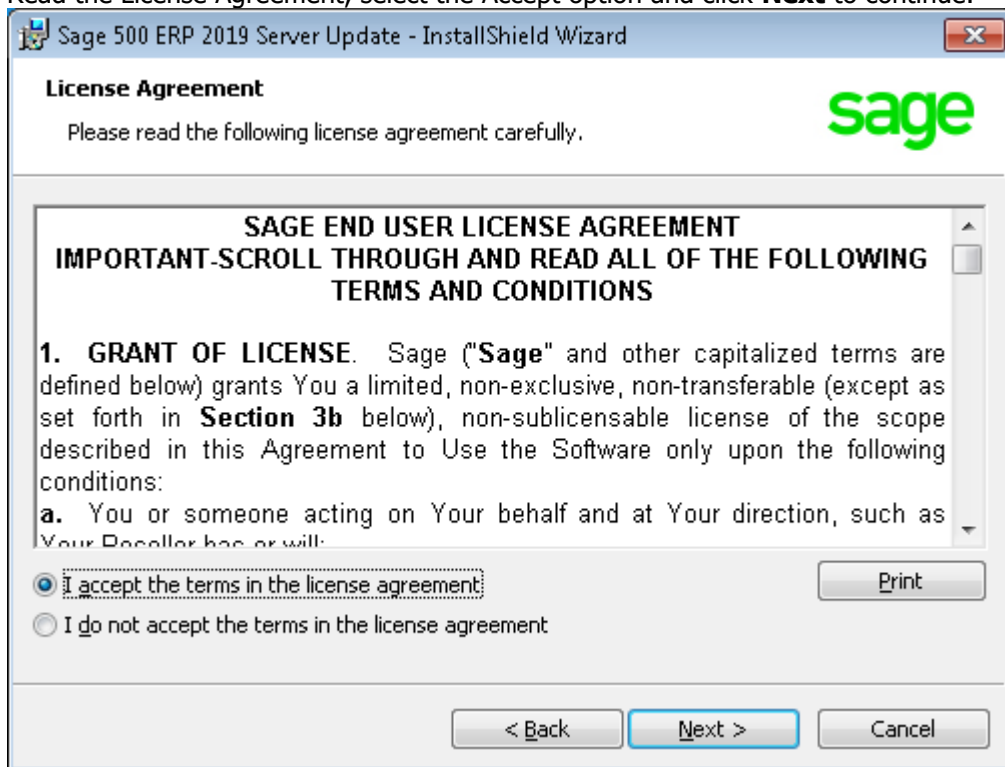
2. Indicate the location to which the installation files should be saved. Select the default location, or select **Change** to browse to a different location.



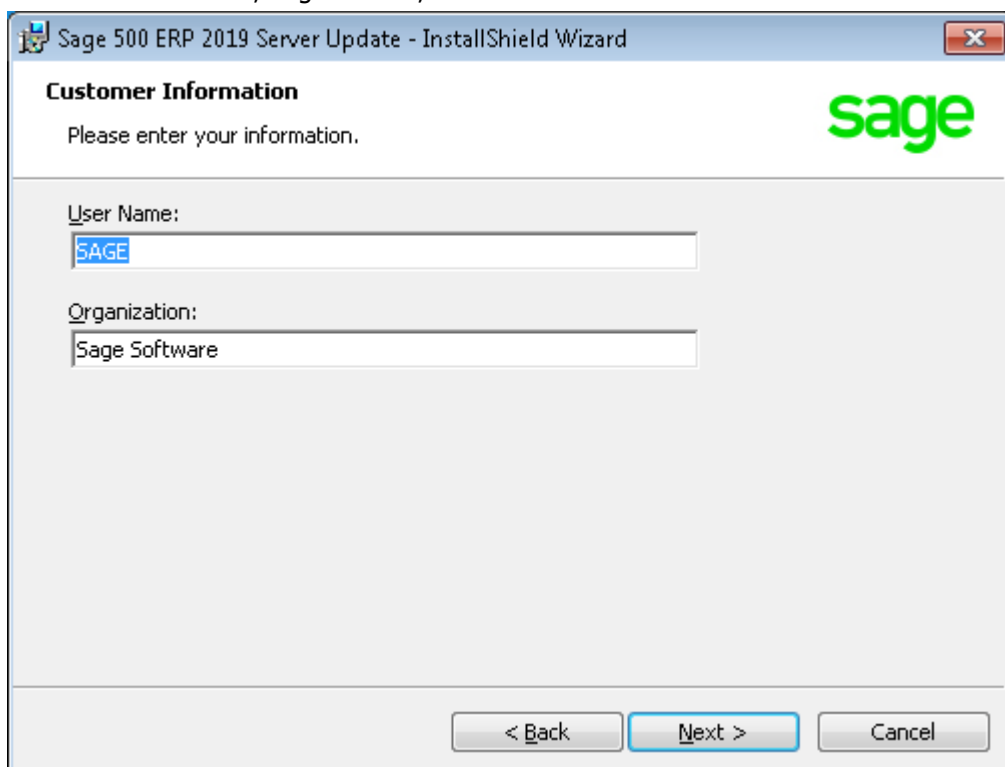
3. At the welcome screen, select **Next** to continue, or **Cancel** to exit setup.



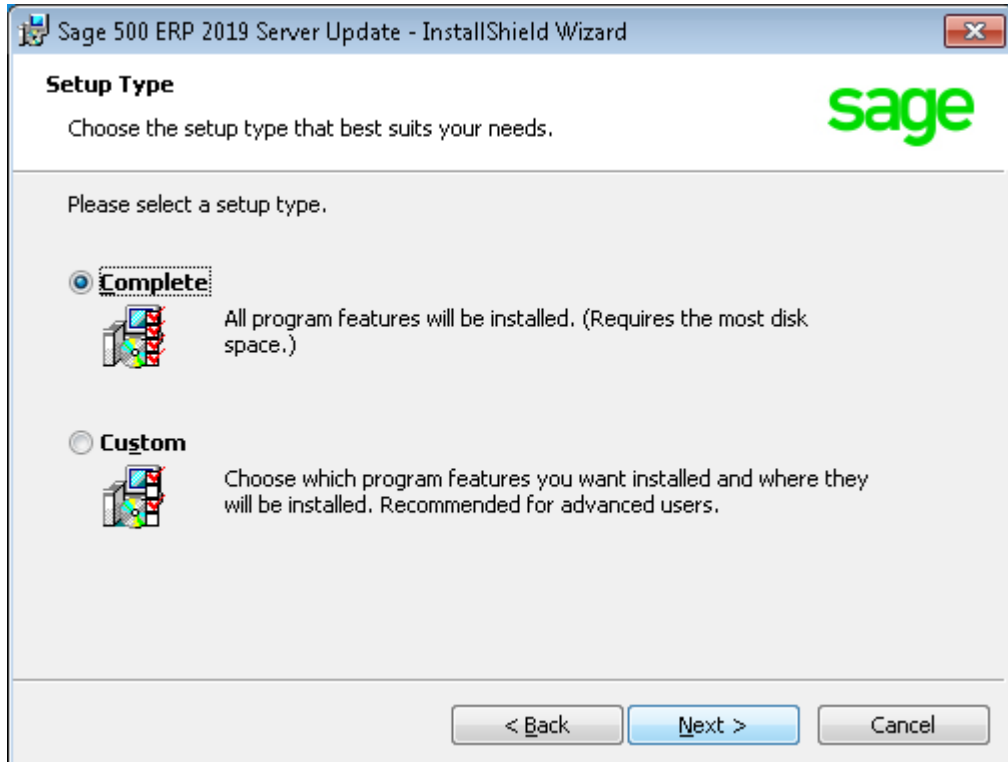
4. Read the License Agreement, select the Accept option and click **Next** to continue.



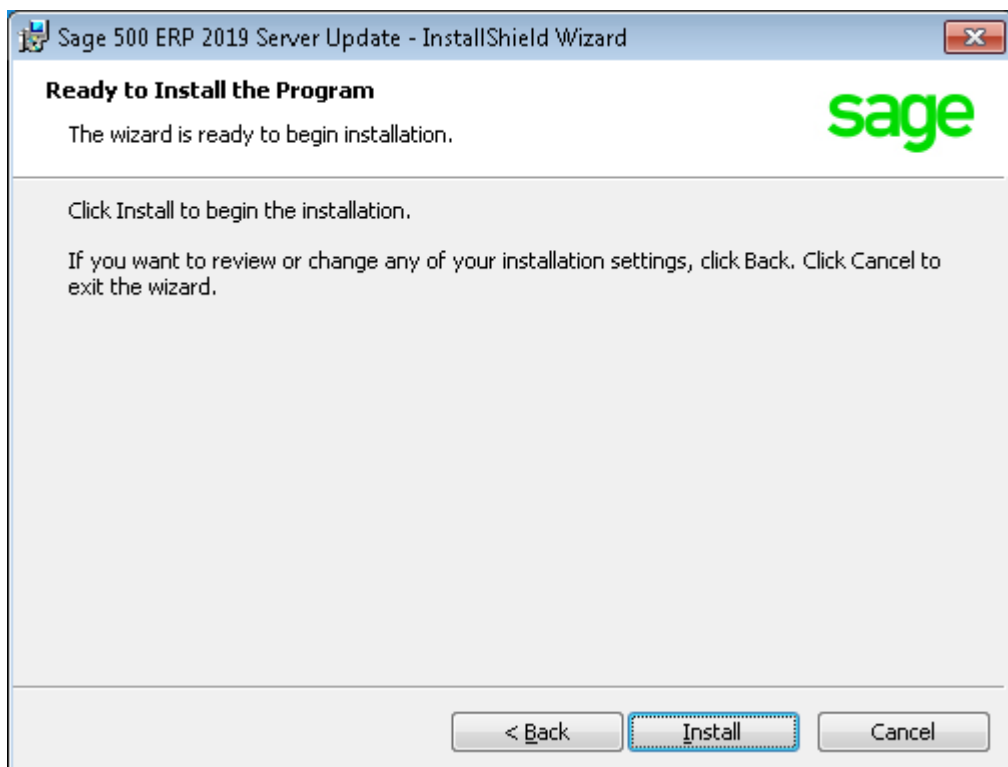
5. Enter the User Name, Organization, and click **Next** to continue.



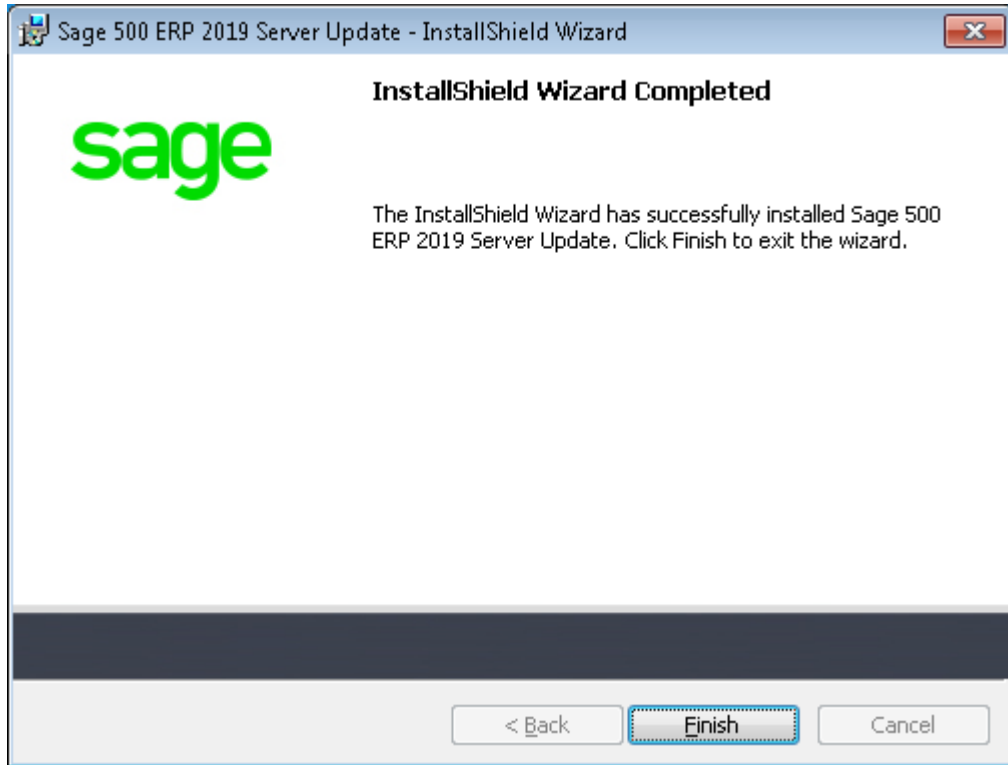
6. Select **Complete** and click **Next** to continue.



7. Click **Install** to continue.

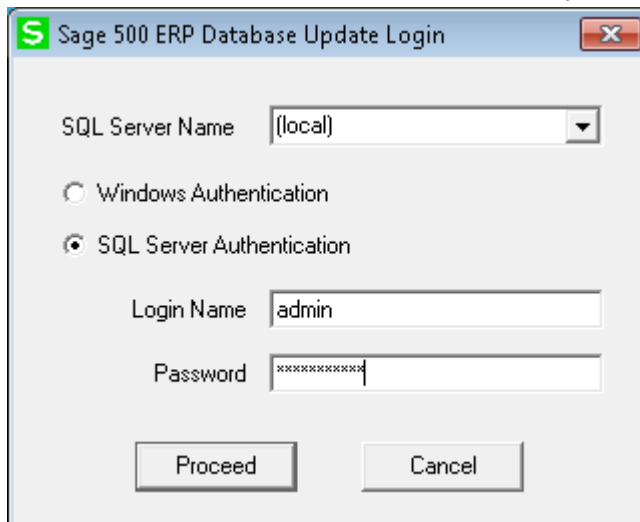


8. At the completion screen, click **Finish** to complete the Sage 500 ERP Server installation.

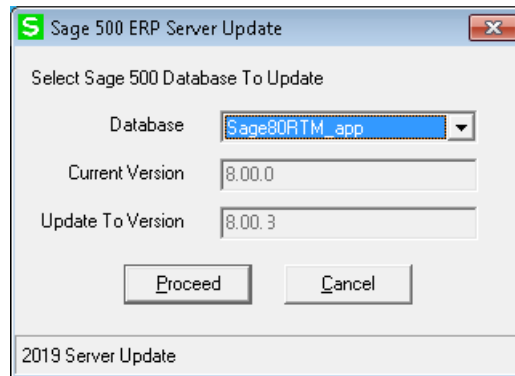


9. If you receive a message to restart the system, click **Yes** to continue. After the system has been restarted, select Sage 500 ERP 2019 Product Update 3 from the Sage 500 ERP 2019 program group.

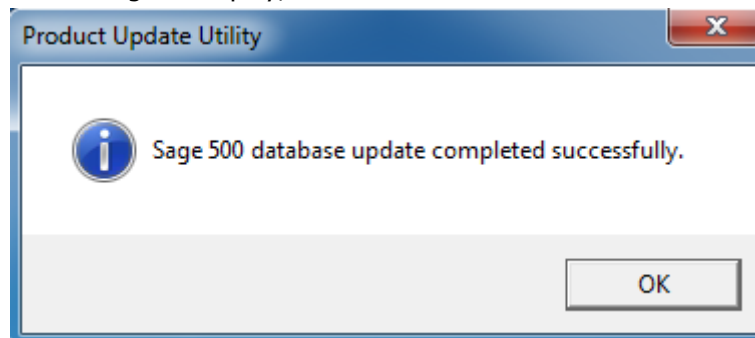
10. Enter the SQL Server Name and SQL Server sa password, select **Proceed** to continue.



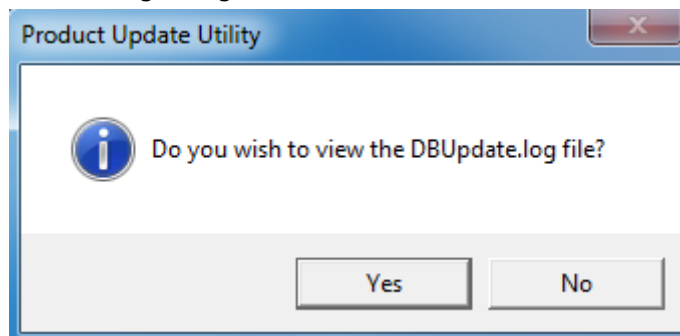
11. Enter the name of the Sage 500 ERP Application Database and select **Proceed** to continue.



12. This confirmation dialog will display; select **OK** to continue.

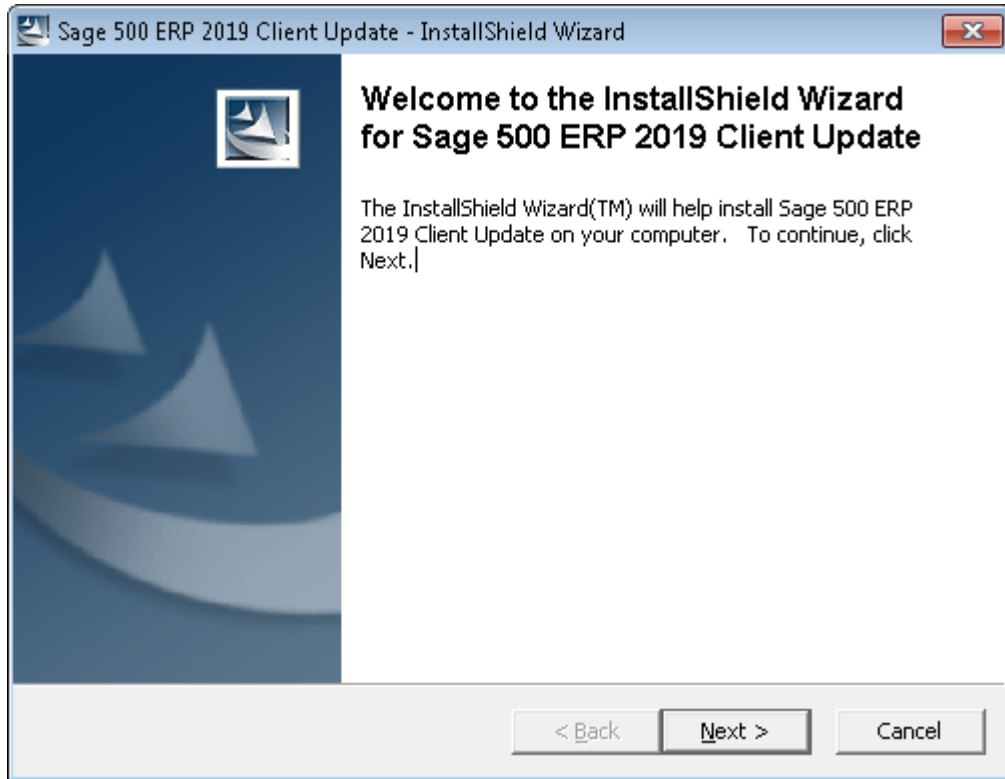


13. After applying the update to the Sage 500 ERP Database, you may view the updates by clicking **Yes** at the following dialog box:

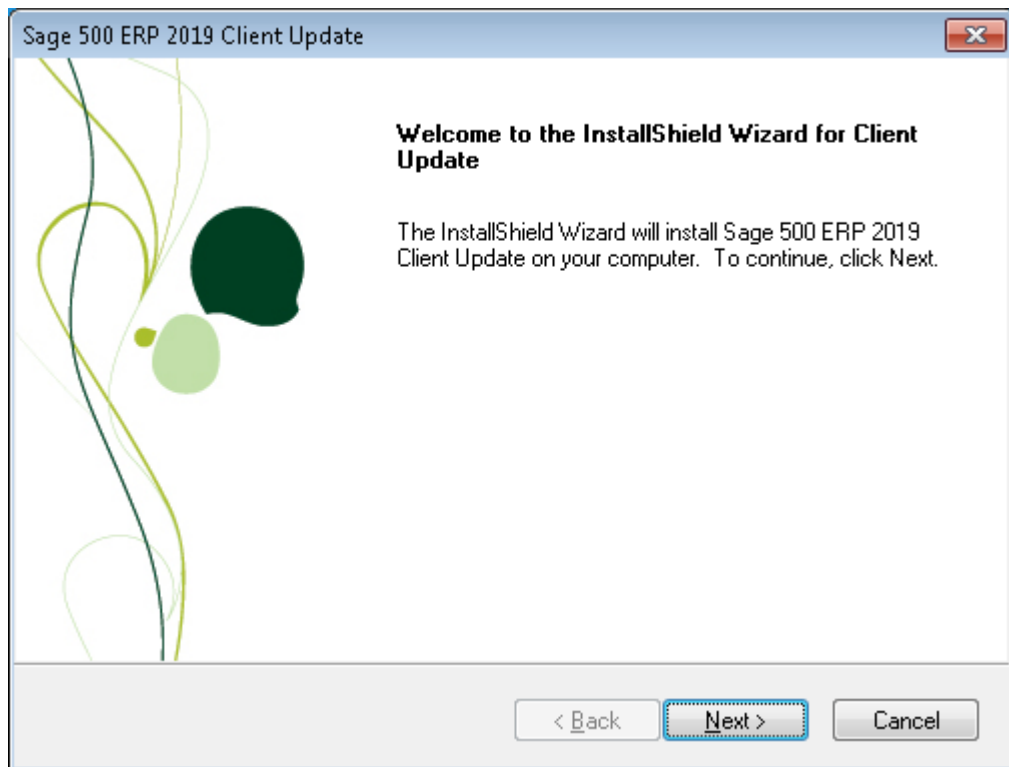


Installing the Client

1. To begin the Sage 500 ERP 2019 Client installation, double-click the **2019PU3C.exe**. A screen similar to the one below will display, click **Continue** to proceed.



2. At the Welcome screen, click **Next** to continue.



3. At the completion screen, click **Finish** to complete the Sage 500 ERP Client update installation.

