



Sage Fixed Assets 2023.0

Release Notes

September 2022

Contents

Features	3
My Asset List Views*	3
Sage Intacct Accounts Payable module integration	4
Last Scan Date*	5
Enhancements	6
Sage Fixed Assets Scanner v2.1*	6
Export Asset History Events report to Excel®*	7
Asset Created history event for assets from Planning and AP/PO Links*	8
Client label on Premier and Network programs*	8
Sage 300 complex password support.....	8
Defect Fixes.....	9
Monthly and Annual Projection reports: Improved ability to process large datasets.....	9
Custom Import: Improved ability to import large datasets.....	9
Custom Import: “System Error” when importing a .xlsx file	9
“Missing Parameter” error when opening a custom Crystal Report	9
Copy Book incorrectly overwriting Period Close information	9
Other 179 deduction values are not copied when RM or RH is the default method for a book	9
“Unable to Post” error when posting an asset with allocations to Sage Intacct.....	9
Print Asset Information: Placed-in-Service Date on disposal detail incorrectly displays the asset’s Acquisition Date.....	10
Unable to register Network product.....	10
Error running Utility Reports when selecting an empty database	10
Product not using printer selected in Print Setup.....	10
Crystal Reports compatibility.....	11
Resolution	11

❖ This feature or enhancement originated from a customer suggestion. See [Sage City: Ideas](#) to vote on requests.

Features

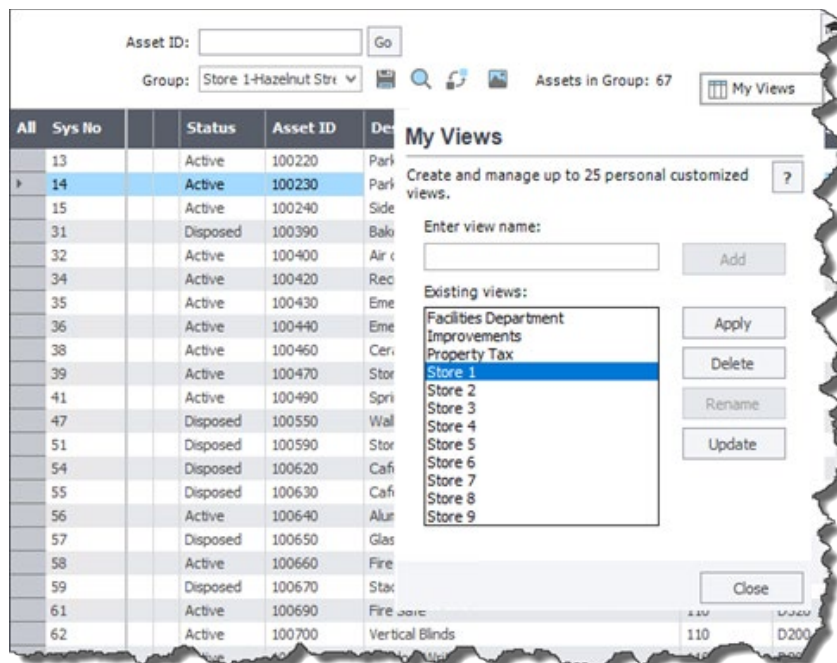
In this release, Sage is excited to announce the addition of the following new features. Refer to the table below to see which features apply to your Sage Fixed Assets products.

Products	Features		
	My Asset List Views	Sage Intacct AP Integration *	Last Scan Date
Sage Fixed Assets—Depreciation (Premier, Network, and Standard)	✓	✓	
Sage Fixed Assets—Lite Depreciation	✓	✓	
Sage Fixed Assets Lite Depreciation for Sage 50, and Sage 50 Fixed Assets	✓		
Sage Fixed Assets—Tracking (Premier, Network, and Standard)	✓		✓

*Subscription plans only

My Asset List Views

Effortlessly change the data in the Asset List to display what you need. My Views allows you to save different views of the Asset List and switch between them. The views are available to use across companies.



Sage Intacct Accounts Payable module integration

Subscription plans only

Easily create assets in Sage Fixed Assets from the Accounts Payable (AP) module in Sage Intacct. After creation, you can open and view an asset's related AP bill in Sage Intacct with the click of a link within Asset Detail.

Sage Intacct AP

Follow the steps below to import data from Sage Intacct and create assets. Click the Open Company button to open the selected company. [User Guide](#)

Step 1: Select a Sage Fixed Assets Company

Database: <DEFAULT> Company: CafeNoir Too USA 1 Entity: 100 - USA 1

Step 2: Select items to create assets

<input checked="" type="checkbox"/>	Bill number	Bill Vendor	Acq Date	Service Date	Bill Amount	Template	Bill Account	Bill Memo	Bill reference number	Department
<input checked="" type="checkbox"/>	345122	20007	7/14/2022		\$3,400.00	Computer	15400	Laptops		200
<input checked="" type="checkbox"/>	W0918342	20010	7/14/2022		\$7,000.00	Equipment 7yr	15500	Recycling Bins		100
<input checked="" type="checkbox"/>	0612759P	20016	7/16/2022		\$27,398.23	Furniture	17000	Modular Furniture		100
<input checked="" type="checkbox"/>	102730	20020	7/19/2022	9/1/2022	\$74,995.00	Equipment 5 yr	15300	3D Printer		500
<input checked="" type="checkbox"/>	SRC250998	20017	7/21/2022	9/1/2022	\$2,999.00	Equipment 7yr	15500	Deluxe Espresso Machines	PO100460	100
<input checked="" type="checkbox"/>	705223	20051	7/21/2022	9/1/2022	\$27,457.40	Software	16900	Customized Software	PO100459	200
<input checked="" type="checkbox"/>	345720	20007	7/12/2022		\$5,600.00	Computer	15300	Laptops		300
<input checked="" type="checkbox"/>	NP73409	20020	7/12/2022		\$42,897.12		15500	Copy Printer Stations		200
<input checked="" type="checkbox"/>	55490	20015	7/27/2022	8/10/2022	\$27,609.09	Computer	15300	Network Server		500
<input checked="" type="checkbox"/>	W092045	20010	7/12/2022		\$4,509.00	Equipment 7yr	15500	Recycling Compactor		100
<input checked="" type="checkbox"/>	GP20973	20002	7/12/2022	9/1/2022	\$450,823.00	Building QIP 15 yr	17000	Leasehold Improvements		100
<input checked="" type="checkbox"/>	452097	20044	7/29/2022	9/1/2022	\$12,083.88	Equipment 5 yr	15500	Office Equipment	PO100457	100
Σ Selected Totals		Item(s)=16		Sum = \$812,620.10						

Step 3: Validate the data

Validating assets: 16 of 16

Step 4: Create the assets

Asset 651: SF-25 Small-Batch Coffee Roaster

Status: Active

System Number: 651 Group: ActiveAssets

Main Transactions Notes Images History

System Number: 651 [Open source document in Sage Intacct](#)

General Information > Items in bold are required fields

Asset ID	100651	Description	SF-25 Small-Batch Coffee Roaster
Location	110	G/L Asset Acct	15500
Department	300	G/L Accum Acct	15510
Class	ME	G/L Expense Acct	60630
Purchase Order		Invoice	AD63022-735
Vendor	20017	Invoice Date	06/30/2022
Serial No		Quantity	1
Owner	1044	Replacement Va...	
Warranty Date	06/30/2023	RV Override?	No
State	VA	Model #	
PT Category	Computers & Periph	Manufacturer	
Entity	100	Bill Reference	374773-HC

Book Information Open Books: 7

Acquisition Date: 06/30/2022 Acquired by: Purchase Exchange or Conversion

Property Type	Tax	Internal	State-GA	ADS	State-CA	N Carolina	Texas
	P	P	P	P	P	P	P

Last Scan Date ❖

See the last date an asset was scanned by simply assigning a custom field to this new feature. The Last Scan Date updates with each inventory.

Customize Fields

Select the field customizations to apply when entering general asset information. 🏠 ?

Asset Field:

- Acquisition Date
- Asset ID
- Class
- Condition
- Custom Date 1
- Custom Date 2
- Custom Field 1
- Custom Field 2
- Custom Field 3
- Custom Field 4
- Custom Field 5
- Custom Field 6
- Custom Field 7
- Custom Field 8
- Custom Field 9
- Custom Field 10
- Department
- Description
- Floor
- G/L Accum Account
- G/L Asset Account
- G/L Expense Account
- Invoice
- Location

Make Tag Field

Unassign Last Inv. Date Field

Custom Field 4 Field Attributes

View: Allow Entry

Title: Last Scan Date

Entry Mask: (Width is 10 of 25 characters)
9999/99/99

Default:

Message: Enter information as determined by your company.

Entry Order: 26th

Activate SmartList SmartList Manager...

Tag Field: Asset ID

Last Inventory Date Field: Custom Field 4

Asset ID: Go

Group: <All Assets> 🔍 🔄 🖨️ Assets in Group: 23

All	Sys No	Status	Asset ID	Description	Acquisition Date	Last Scan Date	Exception Status	Reconcile Sta.
▶	1	Active	100005	Irrigation System	10/01/2006	2022/07/29	O	G
	2	Active	100006	Manufacturing Plant Building	10/15/2006		O	U
	3	Partial	100007	Acme 5000	11/01/2006		O	U
	4	Active	100008	Acme 5001	11/01/2006	2022/07/29	C	U
	6	Active	100027	Fire Alarm System	08/25/2014		O	U
	7	Active	100029	Air Purification Equipment	06/14/2015	2022/07/29	C	U
	8	Active	100040	Generator	09/01/2015	2022/07/29	C	U
	9	Active	100048	Conveyor System	11/07/2016	2022/07/29	C	U

Enhancements

With this release, Sage made the following enhancements. Refer to the table below to see which enhancements apply to your Sage Fixed Assets products.

Products	Enhancements				
	SFA Scanner v2.1	Export Asset History Events report to Excel	Asset Created history event	Client label on Windows install	Sage 300 complex password support
Sage Fixed Assets—Depreciation (Premier and Network)		✓	✓	✓	✓
Sage Fixed Assets—Depreciation (Standard)		✓	✓		✓
Sage Fixed Assets—Lite Depreciation			✓		✓
Sage Fixed Assets—Tracking (Premier and Network)	✓		✓	✓	
Sage Fixed Assets—Tracking (Standard)	✓		✓		

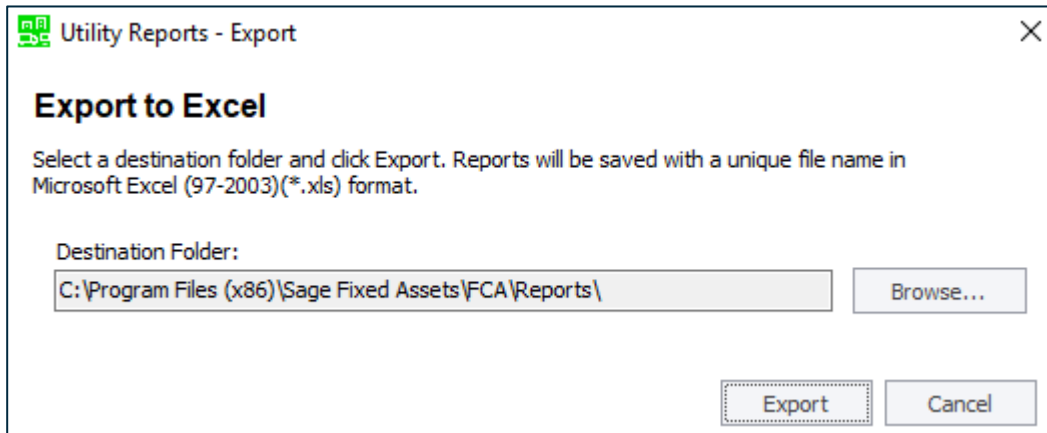
Sage Fixed Assets Scanner v2.1

The Sage Fixed Assets Scanner app for Android has the following updates:

- Filter the Asset List by New, Found, or Not Found status with a single tap
- Available September 2022 in the Google Play Store

Export Asset History Events report to Excel®

The Asset History Events report can now be directly saved as an Excel file for further analysis. This report is one of the six Asset Reports available in Utility Reports.



Sage Fixed Assets - Premier Depreciation					
Asset History Events					
Database: FAS					
Company: Sample U.S. Company					
7	Asset Description = Land				
8	System No. = 000001				
9	Asset ID = 100001				
11					
13	Event Action	Date	Time	User*	Description
14					
16	CHANGE	03/25/2018	11:43:05 PM	'adonie@BEST	Changed asset information - Placed In Service Date from 02/01/1995 to
17					
18	Asset Description = US Patent # D509546				
19	System No. = 000003				
20	Asset ID = 100003				
22					
24	Event Action	Date	Time	User*	Description
25					
27	CHANGE	03/07/2018	08:58:58 AM	'SaMenard@BEST	Changed asset information - Depreciation Method from SL to SF
29	CHANGE	03/07/2018	08:58:58 AM	'SaMenard@BEST	Changed asset information - Estimated Life from 20 yrs 0 mos to 5 yrs 0 mos
31	CHANGE	03/07/2018	11:20:23 AM	'SaMenard@BEST	Changed asset information - Depreciation Method from SL to SF
33	CHANGE	03/07/2018	11:20:23 AM	'SaMenard@BEST	Changed asset information - Estimated Life from 20 yrs 0 mos to 5 yrs 0 mos
34					
35	Asset Description = Parking Lot Light				
36	System No. = 000004				

Asset Created history event for assets from Planning and AP/PO Links ❖

The History Tab of Asset Detail now includes an Asset Created event for assets created from Sage Fixed Assets—Planning and other external Sage applications.

Action	Date	Description	Source Application
Asset Created	August 03, 2022 18:11:16 PM	Asset was created	Sage Fixed Assets - Planning
Changed General Information	August 03, 2022 18:13:53 PM	Data in a general information field was changed	Sage Fixed Assets - Depreciation
Changed General Information	August 03, 2022 18:14:48 PM	Data in a general information field was changed	Sage Fixed Assets - Depreciation
Depreciation Calculated	August 03, 2022 18:15:40 PM	Depreciation was calculated through 8/31/2022	Sage Fixed Assets - Depreciation

Client label on Premier and Network programs ❖

Sage Fixed Assets Premier and Network installations now display “Client” next to the program name to quickly distinguish Client and Server programs.

Before

Uninstall or change a program

To uninstall a program, select it from the list and then click Uninstall, Change, or Repair.

Name	Publisher
Microsoft SQL Server 2016 Management Objects (x64)	Microsoft Corporation
Microsoft SQL Server 2019 (64-bit)	Microsoft Corporation
Microsoft SQL Server 2019 Setup (English)	Microsoft Corporation
Microsoft SQL Server 2019 T-SQL Language Service	Microsoft Corporation
Microsoft SQL Server Management Studio - 18.11.1	Microsoft Corporation
Sage Fixed Assets Premier	Sage Software, Inc.
Sage Fixed Assets Premier Server	Sage Software, Inc.

After

Uninstall or change a program

To uninstall a program, select it from the list and then click Uninstall, Change, or Repair.

Name	Publisher
Microsoft SQL Server 2016 Management Objects (x64)	Microsoft Corporation
Microsoft SQL Server 2019 (64-bit)	Microsoft Corporation
Microsoft SQL Server 2019 Setup (English)	Microsoft Corporation
Microsoft SQL Server 2019 T-SQL Language Service	Microsoft Corporation
Microsoft SQL Server Management Studio - 18.11.1	Microsoft Corporation
Sage Fixed Assets Premier Client	Sage Software, Inc.
Sage Fixed Assets Premier Server	Sage Software, Inc.

Sage 300 complex password support

Sage Fixed Assets now supports Sage 300’s complex password requirements when posting depreciation entries.

Defect Fixes

With this release, Sage made the following defect fixes to the indicated Sage Fixed Assets products. Fixes with no specific product notation apply to all products that include the feature.

Monthly and Annual Projection reports: Improved ability to process large datasets

Performance improvements have been made to the Monthly and Annual Projection reports, reducing unexpected application crashes when running with very large datasets.

Custom Import: Improved ability to import large datasets

Performance improvements have been made to Custom Import, reducing unexpected application crashes, especially when Beginning Date, Beginning YTD, and Beginning Accum data is included in the import.

Custom Import: “System Error” when importing a .xlsx file

Sage Fixed Assets—Depreciation, Tracking (Premier, Network, and Standard)

Applies to Canadian and Government or Nonprofit Organizations

Fixed an issue where a system error occurred when validating or importing a .xlsx file for Canadian and Government or Nonprofit Organizations during Custom Import.

“Missing Parameter” error when opening a custom Crystal Report

Fixed an issue where a “Missing Parameter” error displayed when opening a custom report with parameters. Sage Fixed Assets—Reporting now supports parameters.

Copy Book incorrectly overwriting Period Close information

Fixed an issue where the Period Close information was being overwritten when the “Overwrite existing asset data in destination book?” option was unchecked in the Copy Book dialog.

Other 179 deduction values are not copied when RM or RH is the default method for a book

Fixed an issue where values entered in the Tax Book for Other 179 Deductions did not default to books with a default depreciation method of RM or RH.

“Unable to Post” error when posting an asset with allocations to Sage Intacct

Sage Fixed Assets—Depreciation, Tracking (Premier, Network, and Standard)

Applies to Canadian and Government or Nonprofit Organizations

Fixed an issue where an “Unable to Post” error may occur when posting allocated depreciation entries to Sage Intacct’s general ledger.

Print Asset Information: Placed-in-Service Date on disposal detail incorrectly displays the asset's Acquisition Date

Fixed an issue where the Placed-in Service Date for a disposed asset is incorrect on the Disposal Detail report for Print Asset Information. The asset's Acquisition Date was displayed in error.

Unable to register Network product

Sage Fixed Assets—Depreciation, Tracking (Network)

Fixed an issue where an error message occurred when attempting to register Sage Fixed Assets—Network.

Error running Utility Reports when selecting an empty database

Fixed an issue where an error message occurred when running specific Utility Reports and an empty database was included. Empty databases can no longer be selected.

Product not using printer selected in Print Setup

Fixed an issue where the Microsoft Windows' default printer was used instead of the default printer selected in Sage Fixed Assets when printing reports.

Crystal Reports compatibility

Sage Fixed Assets 2018.1 through 2023.0 use SAP Crystal Reports runtime SP21. This may cause an issue with older Crystal Reports runtime versions used by other products.

You may experience a compatibility issue after upgrading to Sage Fixed Assets 2023.0 if you are also using Sage 100 (2017 and earlier) or Sage 300 CRE (v18.1 and earlier).

Resolution

If you are unable to run reports in one of these products after installing Sage Fixed Assets 2023.0, select the appropriate link for your product below to open the Knowledgebase article for steps to resolve the issue:

- [Sage 100 \(2017 and earlier\)](#)
- [Sage 300 CRE \(v18.1 and earlier\)](#)
- [Sage Fixed Assets 2023.0](#)